

SHERLOCK'S DISEASES OF THE LIVER AND BILIARY SYSTEM

12TH
EDITION

Edited by

James S Dooley

Anna SF Lok

Andrew K Burroughs

E Jenny Heathcote



 WILEY-BLACKWELL



SHERLOCK'S DISEASES OF THE LIVER
AND BILIARY SYSTEM

Companion Website

This book has a companion website

www.wiley.com/go/sherlock/liver

with:

- All 700 figures and captions in the book as Powerpoints for downloading

Sherlock's Diseases of the Liver and Biliary System

EDITED BY

JAMES S. DOOLEY

*Centre for Hepatology
University College London Medical School and
Royal Free Sheila Sherlock Liver Centre
Royal Free Hospital
London
UK*

ANNA S. F. LOK

*Division of Gastroenterology
University of Michigan Health System
Ann Arbor
USA*

ANDREW K. BURROUGHS

*Royal Free Sheila Sherlock Liver Centre
Royal Free Hospital;
University College London
London
UK*

E. JENNY HEATHCOTE

*Division of Gastroenterology
University Health Network
University of Toronto
Toronto
Ontario
Canada*

12TH EDITION

 **WILEY-BLACKWELL**

A John Wiley & Sons, Ltd., Publication

This edition first published 2011, © 1963, 1968, 1975, 1981, 1985, 1989, 1993, 1997, 2002, 2011 by Blackwell Publishing Ltd

Blackwell Publishing was acquired by John Wiley & Sons in February 2007. Blackwell's publishing program has been merged with Wiley's global Scientific, Technical and Medical business to form Wiley-Blackwell.

First published 1955
Second edition 1958
Third edition 1963
Fourth edition 1968
Fifth edition 1975
Sixth edition 1981
Seventh edition 1985
Eighth edition 1989
Ninth edition 1993
Tenth edition 1997
Eleventh edition 2002

Registered office: John Wiley & Sons Ltd, The Atrium, Southern Gate, Chichester, West Sussex, PO19 8SQ, UK

Editorial offices: 9600 Garsington Road, Oxford, OX4 2DQ, UK
The Atrium, Southern Gate, Chichester, West Sussex, PO19 8SQ, UK
111 River Street, Hoboken, NJ 07030-5774, USA

For details of our global editorial offices, for customer services and for information about how to apply for permission to reuse the copyright material in this book please see our website at www.wiley.com/wiley-blackwell

The right of the author to be identified as the author of this work has been asserted in accordance with the Copyright, Designs and Patents Act 1988.

All rights reserved. No part of this publication may be reproduced, stored in a retrieval system, or transmitted, in any form or by any means, electronic, mechanical, photocopying, recording or otherwise, except as permitted by the UK Copyright, Designs and Patents Act 1988, without the prior permission of the publisher.

Wiley also publishes its books in a variety of electronic formats. Some content that appears in print may not be available in electronic books.

Designations used by companies to distinguish their products are often claimed as trademarks. All brand names and product names used in this book are trade names, service marks, trademarks or registered trademarks of their respective owners. The publisher is not associated with any product or vendor mentioned in this book. This publication is designed to provide accurate and authoritative information in regard to the subject matter covered. It is sold on the understanding that the publisher is not engaged in rendering professional services. If professional advice or other expert assistance is required, the services of a competent professional should be sought.

The contents of this work are intended to further general scientific research, understanding, and discussion only and are not intended and should not be relied upon as recommending or promoting a specific method, diagnosis, or treatment by physicians for any particular patient. The publisher and the author make no representations or warranties with respect to the accuracy or completeness of the contents of this work and specifically disclaim all warranties, including without limitation any implied warranties of fitness for a particular purpose. In view of ongoing research, equipment modifications, changes in governmental regulations, and the constant flow of information relating to the use of medicines, equipment, and devices, the reader is urged to review and evaluate the information provided in the package insert or instructions for each medicine, equipment, or device for, among other things, any changes in the instructions or indication of usage and for added warnings and precautions. Readers should consult with a specialist where appropriate. The fact that an organization or Website is referred to in this work as a citation and/or a potential source of further information does not mean that the author or the publisher endorses the information the organization or Website may provide or recommendations it may make. Further, readers should be aware that Internet Websites listed in this work may have changed or disappeared between when this work was written and when it is read. No warranty may be created or extended by any promotional statements for this work. Neither the publisher nor the author shall be liable for any damages arising herefrom.

Library of Congress Cataloging-in-Publication Data

Sherlock's diseases of the liver and biliary system / edited by James S. Dooley ... [et al.]. – 12th ed.
p. ; cm.

Diseases of the liver and biliary system

Rev. ed. of: Diseases of the liver and biliary system / Sheila Sherlock. 11th ed. 2002.

Includes bibliographical references and index.

ISBN 978-1-4051-3489-7 (hardcover : alk. paper)

1. Liver–Diseases. 2. Biliary tract–Diseases. I. Dooley, James (James S.) II. Sherlock, Sheila, Dame. Diseases of the liver and biliary system. III. Title: Diseases of the liver and biliary system.

[DNLM: 1. Liver Diseases. 2. Biliary Tract Diseases. WI 700]

RC845.S52 2011

616.3'6–dc22

2010039149

A catalogue record for this book is available from the British Library.

This book is published in the following electronic formats: ePDF 9781444341263; Wiley Online Library 9781444341294; ePub 9781444341270; Mobi 9781444341287

Set in 9.5/12 pt Palatino by Toppan Best-set Premedia Limited

Contents

List of Contributors, xi

Preface to the Twelfth Edition, xv

Preface to the First Edition, xvi

1 Anatomy and Function, 1

Jay H. Lefkowitz

Development of the liver and bile ducts, 1

Anatomy of the liver, 1

Functional liver anatomy: sectors and segments,
3

Anatomical abnormalities of the liver, 4

Anatomy of the biliary tract, 5

Surface marking, 6

Methods of examination, 6

Microanatomy of the liver, 7

Hepatic ultrastructure (electron microscopy) and
organelle functions, 11

Functional heterogeneity of the liver, 15

Dynamics of the hepatic microenvironment in
physiology and disease, 16

Hepatocyte death and regeneration, 17

References, 18

2 Assessment of Liver Function, 20

Sandeep Mukherjee & John L. Gollan

Selection of biochemical tests, 20

Bile pigments, 21

Serum enzyme tests, 22

Quantitative assessment of hepatic function,
25

Lipid and lipoprotein metabolism, 25

Bile acids, 27

Amino acid metabolism, 30

Plasma proteins, 30

Carbohydrate metabolism, 33

Effects of ageing on the liver, 33

References, 34

3 Biopsy of the Liver, 36

David Patch & Amar Paul Dhillon

Selection and preparation of the patient, 36

Techniques, 37

Risks and complications, 40

Sampling variability, 41

Naked-eye appearances, 43

Preparation of the specimen, 43

Interpretation, 43

Indications, 43

Special methods, 45

References, 46

4 Haematological Disorders of the Liver, 48

Pramod K. Mistry & Dhanpat Jain

The liver and blood coagulation, 50

Haemolytic jaundice, 53

The liver in haemolytic anaemias, 54

The liver in myelo- and lymphoproliferative disease, 57

Leukaemia, 57

Bone marrow transplantation, 57

Lymphoma, 58

Lipid storage diseases, 62

References, 66

5 Acute Liver Failure, 70

Shannan R. Tujios & William M. Lee

Definition, 70

Epidemiology and aetiologies, 71

Clinical features, 74

Initial investigations, 75

Complications and management of acute liver failure, 77

Specific therapies, 84

Prognosis, 86

Liver transplantation, 86

Liver support systems, 88

Conclusion, 88

References, 89

6 Hepatic Fibrogenesis, 94

Meena B. Bansal & Scott L. Friedman

Introduction, 94
Natural history of hepatic fibrosis, 94
Cellular and molecular features of hepatic fibrosis, 95
Clinical aspects of hepatic fibrosis, 100
Emerging antifibrotic targets and strategies, 101
References, 101

7 Hepatic Cirrhosis, 103

P. Aiden McCormick

Definition, 103
Causes of cirrhosis, 103
Anatomical diagnosis, 104
Reversible cirrhosis, 106
Clinical cirrhosis: compensated versus decompensated, 106
Vasodilatation and hyperdynamic circulation, 108
Prognosis (Child–Pugh score, MELD, UKELD), 110
Clinical and pathological associations, 111
Management, 117
References, 118

8 Hepatic Encephalopathy in Patients with Cirrhosis, 121

Marsha Y. Morgan

Classification, 121
Diagnosis, 124
Differential diagnosis, 130
Hepatic encephalopathy and liver transplantation, 131
Prognosis, 131
Pathogenesis, 131
Management of hepatic encephalopathy, 139
Prevention, 146
References, 146

9 The Hepatic Artery, Portal Venous System and Portal Hypertension: the Hepatic Veins and Liver in Circulatory Failure, 152

Andrew K. Burroughs

The hepatic artery, 152
The portal venous system, 156
Haemodynamics of portal hypertension, 160
Clinical features of portal hypertension, 162
Diagnosis of varices, 163
Imaging the portal venous system, 166
Classification of portal hypertension, 171
Extrahepatic portal venous obstruction, 171
Presinusoidal intrahepatic and sinusoidal portal hypertension, 176

Bleeding oesophageal varices, 179
Management of acute variceal bleeding, 181
The hepatic veins, 189
Budd–Chiari (hepatic venous obstruction) syndrome, 191
Circulatory failure, 197
References, 202

10 Ascites, 210

Guadalupe Garcia-Tsao

Mechanisms of ascites formation, 210
Clinical features, 213
Differential diagnosis, 215
Spontaneous bacterial peritonitis, 216
Treatment of cirrhotic ascites, 218
Hyponatraemia, 222
Refractory ascites, 223
Hepatorenal syndrome, 224
Prognosis, 228
References, 228

11 Jaundice and Cholestasis, 234

Elwyn Elias

Introduction, 234
Classification of jaundice, 234
Physiology and pathophysiology, 235
Syndrome of cholestasis, 240
Investigation of the jaundiced patient, 245
Differential diagnosis, 247
Treatment, 249
Familial non-haemolytic hyperbilirubinaemias, 250
References, 254

12 Gallstones and Benign Biliary Diseases, 257

James S. Dooley

Imaging, 258
Composition of gallstones, 261
Formation of cholesterol stones, 261
Factors in cholesterol stone formation, 264
Pigment gallstones, 266
Natural history of gallbladder stones, 266
Acute calculous cholecystitis, 267
Empyema of the gallbladder, 269
Emphysematous cholecystitis, 269
Chronic calculous cholecystitis, 269
Acalculous cholecystitis, 270
Cholecystectomy, 271
Postcholecystectomy bile duct damage, 273
Postcholecystectomy syndromes, 275
Non-surgical treatment of gallstones in the gallbladder, 276

Other gallbladder pathology, 277
 Biliary fistulae, 279
 Gallstone ileus, 280
 Bile peritonitis, 280
 Association between cholecystectomy and colorectal cancer, 281
 Common duct stones, 281
 Management of duct stones, 282
 Haemobilia, 285
 Bile duct–bowel anastomotic stricture, 285
 Chronic pancreatitis, 286
 Primary sclerosing cholangitis and autoimmune pancreatitis, 287
 Bile duct pathology following liver transplantation, 287
 References, 287

13 Malignant Biliary Diseases, 294

Rahul S. Koti & Brian R. Davidson

Carcinoma of the gallbladder, 294
 Carcinoma of the bile duct (cholangiocarcinoma), 296
 Intrahepatic cholangiocarcinoma, 302
 Other biliary malignancies, 302
 Metastases at the hilum, 302
 Periapillary carcinoma, 302
 Conclusions, 308
 References, 308

14 Cysts and Congenital Biliary Abnormalities, 312

Giorgina Mieli-Vergani & Nedim Hadžić

Fibropolycystic diseases, 312
 Adult polycystic disease, 314
 Congenital hepatic fibrosis, 316
 Caroli's disease, 318
 Microhamartoma (von Meyenberg complexes), 319
 Choledochal cysts, 320
 Congenital anomalies of the biliary tract, 322
 References, 326

15 Primary Biliary Cirrhosis, 329

Margaret F. Bassendine

Clinical features, 329
 Diagnosis, 332
 Aetiology, 335
 Epidemiology and genetics, 336
 Treatment, 337
 Prognosis, 338
 References, 338

16 Sclerosing Cholangitis, 342

Simon Rushbrook & Roger W. Chapman

Introduction, 342
 Primary sclerosing cholangitis, 342

Secondary sclerosing cholangitis, 348
 References, 350

17 Enterically Transmitted Viral Hepatitis: Hepatitis A and Hepatitis E, 353

Peter Karayiannis & Howard C. Thomas

General features of enterically transmitted viral hepatitis, 353
 Hepatitis A virus, 358
 Hepatitis E virus, 362
 References, 364

18 Hepatitis B, 367

Anna S. F. Lok

Introduction, 367
 Hepatitis B virus, 367
 Immune response and mechanisms of hepatic injury, 369
 Epidemiology, 370
 Prevention, 371
 Diagnosis, 374
 Clinical manifestations, 376
 Natural history, 377
 Treatment, 380
 References, 389

19 Hepatitis D, 393

Patrizia Farci

History, 393
 Hepatitis D virus, 393
 Epidemiology, 395
 Pathogenesis, 396
 Modes of infection and clinical course, 396
 Diagnosis, 399
 Treatment, 400
 Prevention, 403
 References, 403

20 Hepatitis C, 406

Geoffrey Dusheiko

Introduction, 406
 Epidemiology, 406
 Virology, 408
 Pathology and pathogenesis, 409
 Diagnostic tests for hepatitis C, 410
 Acute hepatitis C, 411
 Chronic hepatitis C, 412
 References, 424

21 Hepatitis due to Non-A–E Viruses, 427

Antonio Craxi & Rosa Di Stefano

General features of non-A–E hepatitides, 427
Hepatotropic viruses, 429
Systemic viral infections that often cause transient liver involvement, 431
References, 435

22 HIV and the Liver, 438

Marion G. Peters & Vincent Soriano

Viral hepatitis and human immunodeficiency virus (HIV) infection, 438
Cirrhosis and liver transplantation, 444
HIV-associated opportunistic infections and the liver, 444
HIV-associated neoplasms of the liver, 446
Antiretroviral-related liver injury in HIV, 446
References, 448

23 Autoimmune Hepatitis and Overlap Syndromes, 452

Gideon M. Hirschfield & E. Jenny Heathcote

Introduction, 452
Disease overview, 452
Biological determinants of disease, 454
Disease presentation, 455
Laboratory features, 457
Imaging, 459
Liver biopsy and histological features, 459
Differential diagnosis, 461
Diagnostic dilemmas, 463
Making a diagnosis in practice, 463
Management strategies, 464
Pregnancy and autoimmune hepatitis, 468
Contraception choices for patients with autoimmune hepatitis, 469
The elderly and autoimmune hepatitis, 469
Childhood-onset autoimmune hepatitis, 469
Autoimmune hepatitis and liver transplantation, 471
Overlap syndromes, 471
Conclusion, 475
References, 475

24 Drug-Induced Liver Injury, 478

Leonard B. Seeff & Robert J. Fontana

Introduction, 478
Worldwide epidemiology, 479
Expressions of hepatotoxicity, 481
Classification of hepatotoxicity, 482
Predictors of susceptibility and outcome in drug-induced liver injury, 483
Mechanisms of injury, drug metabolism and pharmacokinetics, 484

Diagnostic approaches and causality assessment of drug-induced liver injury, 487
Clinical and biochemical presentations of drug-induced liver disease, 488
Assessment of suspected drug-induced liver disease, 489
Assessing causality for drug-induced liver disease, 489
Medical management, 491
Liver injury from specific drugs, 491
References, 499

25 Alcohol and the Liver, 507

Stephen Stewart & Chris Day

Introduction, 507
Alcohol metabolism, 507
Pathogenesis, 508
Susceptibility, 510
Histological features, 511
Clinical features, 513
Clinical syndromes, 516
Prognosis, 517
Treatment, 517
References, 519

26 Iron Overload States, 521

Paul Adams

Normal iron metabolism, 521
Iron overload and liver damage, 523
Genetic haemochromatosis, 523
Other iron storage diseases, 530
References, 531

27 Wilson's Disease, 534

Eve A. Roberts

Molecular genetics: pathogenesis, 534
Pathology, 536
Clinical picture, 537
Genetic strategies, 539
Diagnostic difficulties, 540
Treatment, 540
Prognosis, 542
Indian childhood cirrhosis, 543
References, 543

28 Non-alcoholic Fatty Liver Disease and Nutrition, 546

Stephen H. Caldwell & Curtis K. Argo

Introduction, 546
Clinical features, 548
Laboratory testing, 549
Mitochondriopathies and lipodystrophy, 549
Epidemiology of non-alcoholic fatty liver disease, 549

Pathogenesis of non-alcoholic fatty liver disease and non-alcoholic steatohepatitis, 550
 The natural history of non-alcoholic fatty liver disease (non-alcoholic steatohepatitis and non-NASH fatty liver), 556
 Therapy of non-alcoholic fatty liver disease, 558
 Other forms of non-alcoholic fatty liver, 560
 References, 561

29 The Liver in the Neonate, in Infancy and Childhood, 568

Deirdre A. Kelly

Investigation of liver disease in children, 568
 Neonatal jaundice, 569
 Neonatal liver disease (conjugated hyperbilirubinaemia), 571
 Neonatal hepatitis syndrome, 574
 Inherited disease in the neonate, 576
 Genetic cholestatic syndromes, 578
 Structural abnormalities: biliary atresia and choledochal cyst, 580
 Acute liver failure in infancy, 583
 Liver disease in older children, 585
 Metabolic disease in older children, 587
 Cirrhosis and portal hypertension, 594
 Liver transplantation, 594
 Tumours of the liver, 595
 References, 596

30 The Liver in Pregnancy, 602

Andrew K. Burroughs & E. Jenny Heathcote

Normal pregnancy, 602
 Liver disease in pregnancy, 602
 Diseases specific to pregnancy, 602
 Diseases of late pregnancy, 603
 Pregnancy in those with acute or chronic liver disease, 608
 Hepatotoxic drugs and the pregnant woman, 609
 Pre-existing liver disease, 610
 Pregnancy in liver transplant recipients, 611
 References, 611

31 The Liver in Systemic Disease, 615

Humphrey J. F. Hodgson

Collagen-vascular and autoimmune disorders, 615
 Hepatic granulomas, 616
 The liver in diabetes mellitus, 622
 Liver and thyroid, 622
 Liver and adrenal, 623
 Liver and growth hormone, 623
 Amyloidosis, 623
 Porphyrias, 626
 Non-metastatic complications of malignancy, 628

Bone-marrow/stem cell transplantation; graft-versus-host disease, 629
 References, 629

32 The Liver in Infections, 632

Christopher C. Kibbler

Introduction, 632
 Jaundice of infections, 632
 Pyogenic liver abscess, 632
 Hepatic amoebiasis, 635
 Tuberculosis of the liver, 637
 Hepatic actinomycosis, 638
 Syphilis of the liver, 639
 Perihepatitis, 640
 Leptospirosis, 640
 Relapsing fever, 643
 Lyme disease, 643
 Rickettsial infections, 643
 Fungal infections, 644
 Schistosomiasis (bilharzia), 645
 Malaria, 647
 Kala-azar (visceral leishmaniasis), 648
 Hydatid disease, 648
 Ascariasis, 652
 Strongyloides stercoralis, 654
 Trichinosis, 654
Toxocara canis (visceral larva migrans), 654
 Liver flukes, 654
 References, 656

33 Space-Occupying Lesions: the Diagnostic Approach, 660

Neil H. Davies & Dominic Yu

Ultrasound, 660
 Computed tomography, 661
 Magnetic resonance imaging, 663
 Radioisotope scanning, 666
 Positron emission tomography, 667
 MR spectroscopy, 668
 Conclusions and choice of imaging technique, 669
 References, 669

34 Benign Liver Tumours, 671

Ian R. Wanless

Diagnosis of focal liver lesions, 671
 Hepatocellular tumours, 671
 Biliary and cystic lesions, 676
 Mesenchymal tumours, 677
 References, 678

35 Primary Malignant Neoplasms of the Liver, 681

Morris Sherman

Hepatocellular carcinoma, 681
Cholangiocarcinoma, 696
Other malignant neoplasms of the liver, 698
References, 698

36 Hepatic Transplantation, 704

Andrew K. Burroughs & James O'Beirne

Selection of patients, 704
Candidates: outcome, 706
Absolute and relative contraindications,
712
General preparation of the patient, 713
Donor selection and operation, 713
The recipient operation, 714

Immunosuppression, 716
Postoperative course, 717
Post-transplantation complications, 718
Conclusion, 726
References, 726

37 Liver Transplantation in Patients with Hepatitis B, C or HIV Infection, 731

Norah Terrault

Introduction, 731
Hepatitis B and liver transplantation, 731
Hepatitis C and liver transplantation, 735
HIV and liver transplantation, 740
References, 741

Index, 747

Companion Website

This book has a companion website

www.wiley.com/go/sherlock/liver

with:

- All 700 figures and captions in the book as Powerpoints for downloading

List of Contributors

Paul Adams MD

Professor of Medicine
Chief of Gastroenterology
University Hospital
University of Western Ontario
London, Ontario, Canada

Curtis K. Argo MD, MS

Assistant Professor of Medicine
Division of Gastroenterology and Hepatology
Department of Internal Medicine
University of Virginia Health System
Charlottesville, VA, USA

Meena B. Bansal MD

Assistant Professor of Medicine
Division of Liver Diseases
Mount Sinai School of Medicine
New York, NY, USA

Margaret F. Bassendine BSc, MBBS, FRCP, FRCP(E), DSc(Med)

Professor of Hepatology
Institute of Cellular Medicine
Medical School
Newcastle University
Newcastle upon Tyne, UK

Andrew K. Burroughs FRCP, FMedSci

Consultant Physician and Professor of Hepatology
Royal Free Sheila Sherlock Liver Centre
Royal Free Hospital
University College London
London, UK

Stephen H. Caldwell MD

Professor and Director of Hepatology
Division of Gastroenterology and Hepatology
Department of Internal Medicine
University of Virginia Health System
Charlottesville, VA, USA

Roger W. Chapman MD, FRCP

Consultant Hepatologist,
Department of Translational Gastroenterology,
John Radcliffe Hospital
Oxford, UK

Antonio Craxi MD

Professor of Internal Medicine and Gastroenterology
University of Palermo
Palermo, Italy

Brian R. Davidson MD, FRCS

Professor of Surgery
Academic Department of Surgery
University College London Medical School
Royal Free Hospital
London, UK

Neil H. Davies MB BS, FRCS, FRCR

Consultant Interventional Radiologist
Department of Radiology
Royal Free Hampstead NHS Trust
London, UK

Chris Day FMedSci

Pro-Vice Chancellor and Professor of Liver Medicine
Faculty of Medical Sciences
Newcastle University Medical School
Newcastle upon Tyne, UK

Amar Paul Dhillon MD, FRCP, FRCPath

Professor of Histopathology
Department of Cellular Pathology
University College London Medical School
Royal Free Campus
London, UK

Rosa Di Stefano PhD

Virologist
Department of Virology
University of Palermo
Palermo, Italy

James S. Dooley MD, FRCP

Reader and Honorary Consultant in Medicine
Centre for Hepatology
University College London Medical School;
Royal Free Sheila Sherlock Liver Centre
Royal Free Hospital
London, UK

Geoffrey Dusheiko FCP(SA), FRCP, FRCP(Edin)

Professor of Medicine
Centre for Hepatology
University College London Medical School;
Royal Free Sheila Sherlock Liver Centre
Royal Free Hospital
London, UK

Elwyn Elias MD, FRCP

Honorary Professor of Hepatology
University of Birmingham
Birmingham, UK

Patrizia Farci MD

Chief, Hepatic Pathogenesis Section
Laboratory of Infectious Diseases
National Institute of Allergy and Infectious Diseases
National Institutes of Health
Bethesda, MD, USA

Robert J. Fontana MD

Professor of Medicine
Division of Gastroenterology
Department of Internal Medicine
University of Michigan Medical School
Ann Arbor, MI, USA

Scott L. Friedman MD

Fishberg Professor of Medicine
Chief, Division of Liver Diseases
Mount Sinai School of Medicine
New York, NY, USA

Guadalupe Garcia-Tsao MD

Professor of Medicine
Section of Digestive Diseases
Yale School of Medicine
New Haven, Connecticut;
Veterans Affairs Connecticut Healthcare System
West Haven, Connecticut, USA

John L. Gollan MD, PhD, FRCP, FRACP

Dean and Stokes-Shackleford Professor of Medicine
University of Nebraska Medical Center
Omaha, NE, USA

Nedim Hadžić MD

Reader in Paediatric Hepatology
King's College London School of Medicine
King's College Hospital
London, UK

E. Jenny Heathcote MB BS, MD, FRCP, FRCP(C)

Frances Family Chair in Hepatology Research
Professor of Medicine
University of Toronto
Head, Patient Based Clinical Research
Toronto Western Hospital Research Institute
Toronto, Ontario, Canada

Gideon M. Hirschfield MBBChir, MRCP, PhD

Assistant Professor of Medicine
Liver Centre
Toronto Western Hospital
Toronto, Ontario, Canada

Humphrey J. F. Hodgson FRCP, DM, FMedSci

Sheila Sherlock Chair of Medicine
Centre for Hepatology
University College London School of Medicine;
Royal Free Sheila Sherlock Liver Centre
Royal Free Hospital
London, UK

Dhanpat Jain MD

Associate Professor of Pathology
Yale School of Medicine
New Haven, CT, USA

Peter Karayiannis BSc, PhD, FIBMS, FRCPPath

Reader in Molecular Virology
Imperial College
London, UK

Deirdre A. Kelly MD, FRCP, FRCPI, FRCPCH

Professor of Paediatric Hepatology
Liver Unit
Birmingham Children's Hospital
University of Birmingham
Birmingham, UK

Christopher C. Kibbler MA, FRCP, FRCPath

Professor of Medical Microbiology
Centre for Clinical Microbiology
University College London Medical School;
Department of Medical Microbiology
Royal Free Hampstead NHS Trust
London, UK

Rahul S. Koti MD, FRCS

Honorary Lecturer in Surgery
Academic Department of Surgery
University College London Medical School
Royal Free Hospital
London, UK

William M. Lee MD, FACP

Professor of Internal Medicine
University of Texas
Southwestern Medical Center at Dallas
Dallas, TX, USA

Jay H. Lefkowitz MD

Professor of Clinical Pathology
College of Physicians and Surgeons
Columbia University
New York, NY, USA

Anna S. F. Lok MBBS, MD, FRCP

Alice Lohrman Andrews Research Professor in Hepatology
Director of Clinical Hepatology
Division of Gastroenterology
University of Michigan Health System
Ann Arbor, MI, USA

P. Aiden McCormick MD, FRCP, FRCPI

Consultant Hepatologist and Newman Clinical
Research Professor,
St Vincent's University Hospital and University
College Dublin,
Dublin
Ireland

Giorgina Mieli-Vergani MD, PhD

Alex Mowat Chair of Paediatric Hepatology
King's College London School of Medicine
King's College Hospital
London, UK

Pramod K. Mistry MD, PhD, FRCP

Professor of Pediatrics and Medicine
Chief, Pediatric Gastroenterology and Hepatology
Yale University School of Medicine
New Haven, CT, USA

Marsha Y. Morgan FRCP

Reader in Medicine and Honorary Consultant Physician
Centre for Hepatology
Royal Free Campus
University College London Medical School
London, UK

Sandeep Mukherjee MB BCh, MPH, FRCPC

Associate Professor of Internal Medicine
Nebraska Medical Center
Section of Gastroenterology and Hepatology
Omaha, NE, USA

James O'Beirne MB BS, MD, MRCP

Consultant Physician and Hepatologist
Royal Free Sheila Sherlock Liver Centre
Royal Free Hospital
London, UK

David Patch MB BS, FRCP

Hepatologist
Royal Free Sheila Sherlock Liver Centre
Royal Free Hospital
London, UK

Marion G. Peters MD, FRACP

John V. Carbone MD Endowed Chair in Medicine
Division of Gastroenterology
University of California, San Francisco
San Francisco, CA, USA

Eve A. Roberts MD, MA, FRCPC

Departments of Paediatrics, Medicine and Pharmacology
University of Toronto
Toronto, Ontario, Canada

Simon Rushbrook MD, MRCP

Consultant Gastroenterologist,
Department of Gastroenterology,
Norfolk and Norwich Hospital,
Norwich, UK

Leonard B. Seeff MD

Former Senior Scientific Officer
National Institute of Diabetes and Digestive and Kidney
Diseases
National Institutes of Health
Bethesda, MD, USA

Morris Sherman MB BCh, PhD, FRCP(C)

Associate Professor of Medicine
University of Toronto
Toronto, Ontario, Canada

Vincent Soriano MD, PhD

Assistant Director
Hospital Carlos III
Department of Infectious Diseases
Madrid, Spain

Stephen Stewart MBChB, PhD

Consultant Hepatologist and Director of Liver Centre
Mater Misericordiae University Hospital
Dublin

Norah Terrault MD, MPH

Professor of Medicine and Surgery
Division of Gastroenterology
University of California San Francisco
San Francisco, CA, USA

**Howard C. Thomas BSc, PhD, FRCP, FRCPath,
FMedSci**

Liver Unit
Department of Hepatology and Gastroenterology
Imperial College London
London, UK

Shannan R. Tujios MD

Fellow, Division of Digestive Diseases
Department of Internal Medicine
Southwestern Medical Center at Dallas
Dallas, TX, USA

Ian R. Wanless MD, CM, FRCPC

Professor of Pathology
Department of Pathology
Dalhousie University
Queen Elizabeth II Health Services Centre
Halifax, Canada

Dominic Yu MB BS, MRCPI, FRCR

Consultant Radiologist
Department of Radiology
Royal Free Hampstead NHS Trust
London, UK

Preface to the Twelfth Edition

The 11th edition marked the end of an era. Professor Dame Sheila Sherlock died in December 2001, having a month before seen and enjoyed an advanced copy of her latest textbook. Her journey in Hepatology began in the 1940s, and she was instrumental in its development and recognition as a major specialty. In 1955 she published the first edition of what was to become a classic textbook. Single handed she updated the script on a regular basis and it became an influential instrument for the development of Hepatology. There were many translations of the editions over subsequent 50 years. Recognising the growth and complexity of the subject, she involved a co-author from 1993. Many attribute their career in liver disease to reading and enjoying her approach to Hepatology through her book.

The question of a 12th edition was raised on several occasions over the subsequent years. Although some wondered whether it should cease with her passing, many others constantly asked when the next edition would be—a reflection of the special content, presentation and readability—an accessible source to relevant information for student to specialist physician.

Continuing a two author book was not thought practicable. The growth of Hepatology as a speciality demanded a greater pool of expertise, in viral, immune and genetic diseases, as well as the management of the complications of acute and chronic liver disease, and of course, liver transplantation.

Dame Sheila always promoted the internationalism of Hepatology and therefore it was a short step to draw together editors and contributors from the UK, Europe and North America. The challenge—apart from updating the previous edition with pertinent data—was to keep the ethos of the book. The style of English, the lay out of text and the clarity of figures and tables were hallmarks. With this in mind contributors were approached with expertise in particular areas; most had trained or worked with Dame Sheila. It is a tribute to her influence that the resultant text comes from such an international community, many of whom had close links with her.

Apart from updating the previous chapters, there have been other changes. New chapters have been com-

missioned including those on fibrogenesis, non alcoholic fatty liver disease, HIV and the liver, and transplantation in patients with hepatitis B, C or HIV infection. Some previous chapters, which have stood the test of time on their own, have been removed or combined with others. Thus Budd Chiari syndrome joins the portal hypertension chapter, and biliary imaging that on gallstones and benign bile duct diseases.

The 12th edition contains more than 2240 new references and over 130 new figures. Each chapter begins with learning points. The previous artwork has been reformatted, alongside the new figures and tables. As before the book is intended for a wide readership across students, trainees, general and specialist physicians.

We are most grateful to the production team at Wiley Blackwell, in particular Rebecca Huxley (whose 3rd edition this is). Anne Bassett and Annette Abel have enthusiastically taken on the challenge of collecting manuscripts and proofs and chasing the large number of contributors, working beyond the call of duty to produce the book rapidly. We are grateful to Jane Fallows for the new artwork and reworking of the old. As before the publishers have allowed the latest important publications to be included at the proofing stage.

We dedicate this edition to the memory of Sheila Sherlock and to Geraint James, her husband of 50 years who died in October 2010. He knew of the development of the new edition and took pleasure in its anticipation. We hope that their two daughters, Amanda and Auriole, always referenced in previous prefaces with their life stories, will take pleasure from seeing the legacy of their mother's exceptional life preserved in this textbook.

The science and practice of Hepatology continue to move on at breathtaking speed. This progress is reflected in the 12th edition of *Sherlock's Diseases of the Liver and Biliary System*, in a manner which we hope will continue to enthuse its readers.

James S. Dooley
Anna S.F. Lok
Andrew K. Burroughs
E. Jenny Heathcote
March 2011

Preface to the First Edition

My aim in writing this book has been to present a comprehensive and up-to-date account of diseases of the liver and biliary system, which I hope will be of value to physicians, surgeons and pathologists and also a reference book for the clinical student. The modern literature has been reviewed with special reference to articles of general interest. Many older more specialized classical contributions have therefore inevitably been excluded.

Disorders of the liver and biliary system may be classified under the traditional concept of individual diseases. Alternatively, as I have endeavoured in this book, they may be described by the functional and morphological changes which they produce. In the clinical management of a patient with liver disease, it is important to assess the degree of disturbance of four functional and morphological components of the liver—hepatic cells, vascular system (portal vein, hepatic artery and hepatic veins), bile ducts and reticulo-endothelial system. The typical reaction pattern is thus sought and recognized before attempting to diagnose the causative insult. Clinical and laboratory methods of assessing each of these components are therefore considered early in the book. Descriptions of individual diseases follow as illustrative examples. It will be seen that the features of hepatocellular failure and portal hypertension are described in general terms as a foundation for subsequent discussion of virus hepatitis, nutrition liver disease and the cirrhoses. Similarly blood diseases and infections of the liver are included with the reticulo-endothelial system, and disorders of the biliary tract follow descriptions of acute and chronic bile duct obstruction.

I would like to acknowledge my indebtedness to my teachers, the late Professor J. Henry Dible, the late Professor Sir James Learmonth and Professor Sir John McMichael, who stimulated my interest in hepatic disease, and to my colleagues at the Postgraduate Medical School and elsewhere who have generously invited me to see patients under their care. I am grateful to Dr A. G. Bearn for criticizing part of the typescript and to Dr A. Paton for his criticisms and careful proof reading. Miss D. F. Atkins gave much assistance with proof reading and with the bibliography. Mr Per

Saugman and Mrs J. M. Green of Blackwell Scientific Publications have co-operated enthusiastically in the production of this book.

The photomicrographs were taken by Mr E. V. Willmott, FRPS, and Mr C. A. P. Graham from section prepared by Mr J. G. Griffin and the histology staff of the Postgraduate Medical School. Clinical photographs are the work of Mr C. R. Brecknell and his assistants. The black and white drawings were made by Mrs H. M. G. Wilson and Mr D. Simmonds. I am indebted to them all for their patience and skill.

The text includes part of unpublished material included in a thesis submitted in 1944 to the University of Edinburgh for the degree of MD, and part of an essay awarded the Buckston-Browne prize of the Harveian Society of London in 1953. Colleagues have allowed me to include published work of which they are jointly responsible. Dr Patricia P. Franklyn and Dr R. E. Steiner have kindly loaned me radiographs. Many authors have given me permission to reproduce illustrations and detailed acknowledgments are given in the text. I wish also to thank the editors of the following journals for permission to include illustrations: *American Journal of Medicine*, *Archives of Pathology*, *British Heart Journal*, *Circulation*, *Clinical Science*, *Edinburgh Medical Journal*, *Journal of Clinical Investigation*, *Journal of Laboratory and Clinical Investigation*, *Journal of Pathology and Bacteriology*, *Lancet*, *Postgraduate Medical Journal*, *Proceedings of the Staff Meetings of the Mayo Clinic*, *Quarterly Journal of Medicine*, *Thorax* and also the following publishers: Butterworth's Medical Publications, J. & A. Churchill Ltd, The Josiah Macy Junior Foundation and G. D. Searle & Co.

Finally I must thank my husband, Dr D. Geraint James, who, at considerable personal inconvenience, encouraged me to undertake the writing of this book and also criticized and rewrote most of it. He will not allow me to dedicate it to him.

SHEILA SHERLOCK
1955

CHAPTER 1

Anatomy and Function

Jay H. Lefkowitz

College of Physicians and Surgeons, Columbia University, New York, NY, USA

Learning points

- The liver is derived from a foregut endodermal bud which develops in the third week of gestation and divides into two parts: hepatic and biliary.
- The Couinaud classification subdivides the liver into eight segments (segments I–IV in the left lobe, segments V–VIII in the right lobe) based on vascular and biliary anatomical landmarks.
- The lobule described by Kiernan is the most widely used unit of liver microanatomy, consisting of a hexagon-like region of liver parenchyma with a central vein as its hub and portal tracts located in the periphery of the hexagon.
- Hepatocytes are functionally heterogeneous within the lobular parenchyma, whereby centrilobular cells subserve different functions (e.g. drug metabolism) from periportal cells (e.g. bile salt-dependent bile formation).
- Uncomplicated regeneration of hepatocytes and/or bile duct epithelium usually occurs by cell division of the indigenous cells; however, when normal regenerative capacity is overwhelmed there may be activation of progenitor cells located in the region of the canals of Hering.

Development of the liver and bile ducts

The liver begins as a hollow endodermal bud from the foregut (duodenum) during the third week of gestation. The bud separates into two parts—hepatic and biliary. The *hepatic* part contains bipotential progenitor cells that differentiate into hepatocytes or ductal cells, which form the early primitive bile duct structures (bile duct plates). Differentiation is accompanied by changes in cytokeratin type within the cell [1]. Normally, this collection of rapidly proliferating cells penetrates adjacent mesodermal tissue (the septum transversum) and is met by ingrowing capillary plexuses from the vitelline and umbilical veins, which will form the sinusoids. The connection between this proliferating mass of cells and the

foregut, the *biliary* part of the endodermal bud, will form the gallbladder and extrahepatic bile ducts. Bile begins to flow at about the 12th week. Connective tissue cells of portal tracts are derived from the mesoderm of the septum transversum. Kupffer cells derive from circulating monocytes and possibly yolk sac macrophages. Hepatic stellate cells appear to be mesodermal derivatives from submesothelial cells located beneath the surface of the developing liver [2]. The fetal liver is the main site of haemopoiesis by the 12th week; this subsides in the fifth month coincident with the onset of bone marrow haemopoietic activity, so that only a few haemopoietic cells remain at birth.

Anatomy of the liver

The liver, the largest organ in the body, weighs 1200–1500 g and comprises one-fiftieth of the total adult body weight. It is relatively larger in infancy, comprising one-eighteenth of the birth weight. This is mainly due to a large left lobe.

Sheltered by the ribs in the right upper quadrant, the upper border lies approximately at the level of the nipples. There are two anatomical lobes, the right being about six times the size of the left (Figs 1.1–1.3). Lesser segments of the right lobe are the *caudate lobe* on the posterior surface and the *quadrate lobe* on the inferior surface. The right and left lobes are separated anteriorly by a fold of peritoneum called the falciform ligament, posteriorly by the fissure for the ligamentum venosum and inferiorly by the fissure for the ligamentum teres.

The liver has a double blood supply. The *portal vein* brings venous blood from the intestines and spleen and the *hepatic artery*, coming from the coeliac axis, supplies the liver with arterial blood. These vessels enter the liver through a fissure, the *porta hepatis*, which lies far back on the inferior surface of the right lobe. Inside the porta, the portal vein and hepatic artery divide into branches to the right and left lobes, and the right and left hepatic

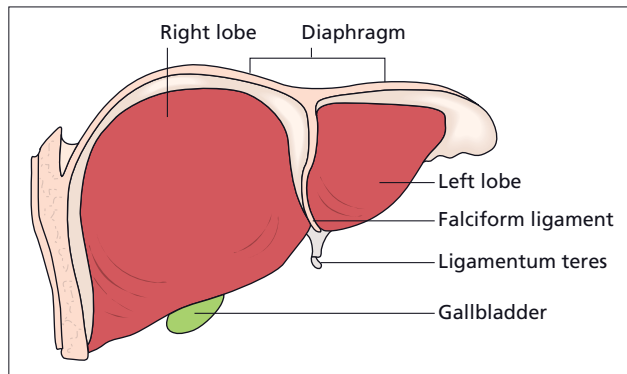


Fig. 1.1. Anterior view of the liver.

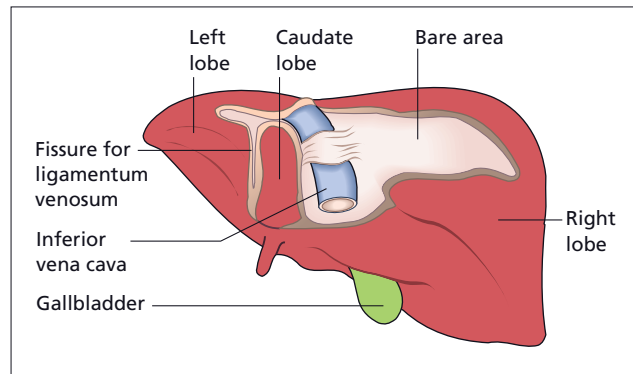


Fig. 1.2. Posterior view of the liver.

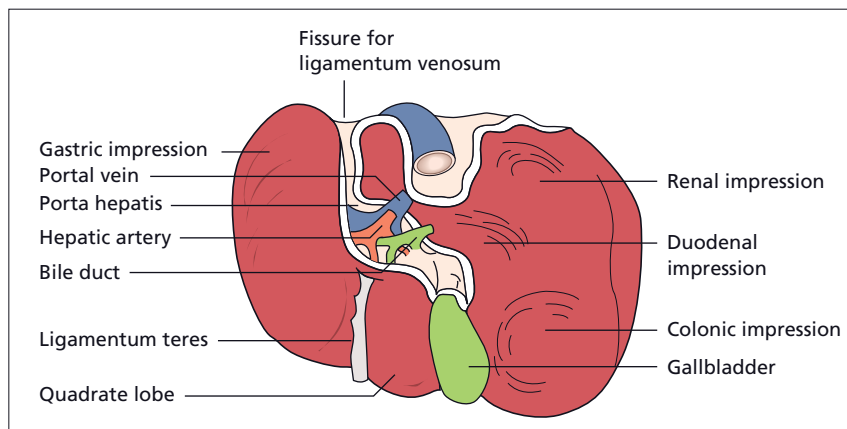


Fig. 1.3. Inferior view of the liver.

bile ducts join to form the common hepatic duct. The *hepatic nerve plexus* contains fibres from the sympathetic ganglia T7–T10, which synapse in the coeliac plexus, the right and left vagi and the right phrenic nerve. It accompanies the hepatic artery and bile ducts into their finest ramifications, even to the portal tracts and hepatic parenchyma [3].

The *ligamentum venosum*, a slender remnant of the ductus venosus of the fetus, arises from the left branch of the portal vein and fuses with the inferior vena cava at the entrance of the left hepatic vein. The *ligamentum teres*, a remnant of the umbilical vein of the fetus, runs in the free edge of the falciform ligament from the umbilicus to the inferior border of the liver and joins the left branch of the portal vein. Small veins accompanying it connect the portal vein with veins around the umbilicus. These become prominent when the portal venous system is obstructed inside the liver.

The venous drainage from the liver is into the *right and left hepatic veins* which emerge from the back of the liver and at once enter the inferior vena cava very near its point of entry into the right atrium.

Lymphatic vessels terminate in small groups of glands around the porta hepatis. Efferent vessels drain into glands around the coeliac axis. Some superficial hepatic lymphatics pass through the diaphragm in the falciform ligament and finally reach the mediastinal glands. Another group accompanies the inferior vena cava into the thorax and ends in a few small glands around the intrathoracic portion of the inferior vena cava.

The *inferior vena cava* makes a deep groove to the right of the caudate lobe about 2 cm from the midline.

The *gallbladder* lies in a fossa extending from the inferior border of the liver to the right end of the porta hepatis.

The liver is completely covered with peritoneum, except in three places. It comes into direct contact with the diaphragm through the bare area which lies to the right of the fossa for the inferior vena cava. The other areas without peritoneal covering are the fossae for the inferior vena cava and gallbladder.

The liver is kept in position by peritoneal ligaments and by the intra-abdominal pressure transmitted by the tone of the muscles of the abdominal wall.

Functional liver anatomy: sectors and segments

Based on the external appearances described above, the liver has a right and left lobe separated along the line of insertion of the falciform ligament. This separation, however, does not correlate with blood supply or biliary drainage. A *functional anatomy* is now recognized based upon vascular and biliary anatomy. The *Couinaud* classification [4] defines eight segments (segments I-IV in the left lobe, V-VIII in the right lobe), while the *Bismuth* classification [5] divides the liver into four sectors. These can be correlated with results seen with imaging techniques.

The main portal vein divides into right and left branches and each of these supplies two further subunits (variously called sectors). The sectors on the right side are anterior and posterior and, in the left lobe, medial and lateral—giving a total of four sectors (Fig. 1.4). Using this definition, the right and left side of the liver are divided not along the line of the falciform ligament, but along a slightly oblique line to the right of this, drawn from the inferior vena cava above to the gallbladder bed below. The right and left side are independent with regard to portal and arterial blood supply, and bile drainage. Three planes separate the four sectors and contain the three major hepatic vein branches.

Closer analysis of these four hepatic sectors produces a further subdivision into segments (Fig. 1.5). The right anterior sector contains segments V and VIII; right posterior sector, VI and VII; left medial sector, IV; left lateral sector, II and III. There is no vascular anastomosis between the macroscopic vessels of the segments but communications exist at the sinusoidal level. Segment I, the equivalent of the caudate lobe, is separate from the other segments and does not derive blood directly from the major portal branches or drain by any of the three major hepatic veins.

This functional anatomical classification allows interpretation of radiological data and is of importance to the

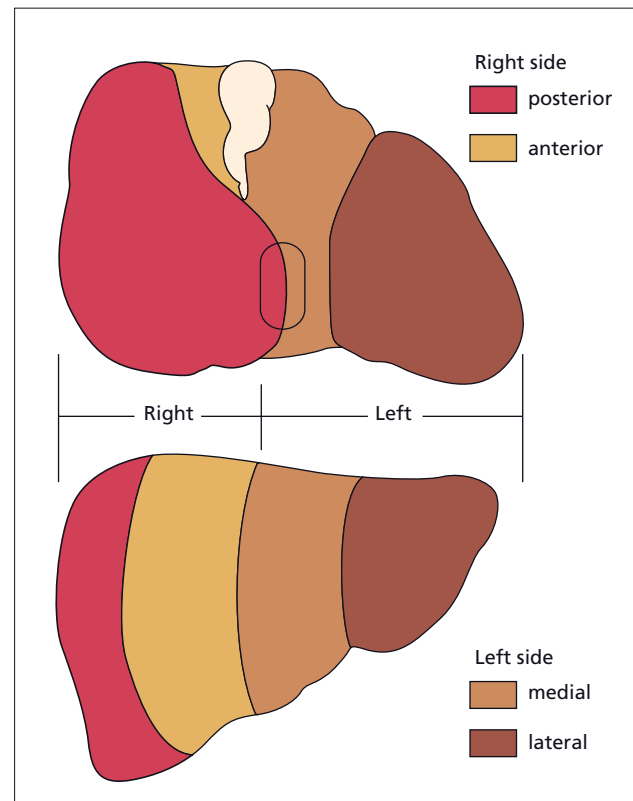


Fig. 1.4. The sectors of the human liver.

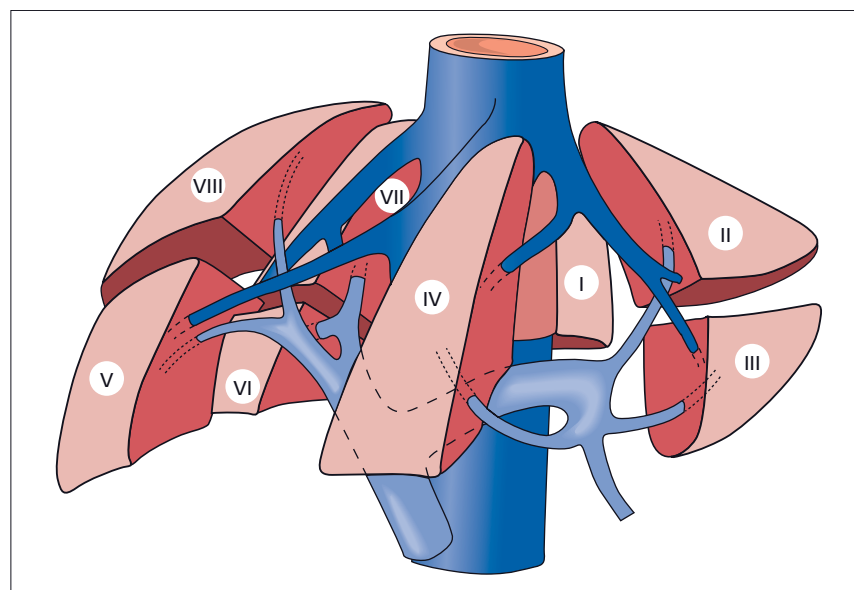


Fig. 1.5. Schematic representation of the functional anatomy of the liver. Three main hepatic veins (dark blue) divide the liver into four sectors, each of them receiving a portal pedicle; hepatic veins and portal veins are intertwined as the fingers of two hands [5].

surgeon planning a liver resection. There are wide variations in portal and hepatic vessel anatomy which can be demonstrated by spiral computed tomography (CT) and magnetic resonance imaging (MRI) reconstruction [6].

Anatomical abnormalities of the liver

These are being increasingly diagnosed with more widespread use of CT and ultrasound scanning.

Accessory lobes. The livers of the pig, dog and camel are divided into distinct and separate lobes by strands of connective tissue. Occasionally, the human liver may show this reversion and up to 16 lobes have been reported. This abnormality is rare and without clinical significance. The lobes are small and usually on the undersurface of the liver so that they are not detected clinically but are noted incidentally at scanning, operation or necropsy. Rarely they are intrathoracic [7]. An accessory lobe may have its own mesentery containing hepatic artery, portal vein, bile duct and hepatic vein. This may twist and demand surgical intervention.

Ectopic liver. Small nodules of normal liver derived from the embryologic hepatic bud may be found in less than 1% of laparoscopies and autopsies near the gallbladder, hepatic ligaments, gastrosplenic ligament, omentum, retroperitoneum and thorax. These may give rise to hepatocellular carcinoma [8,9].

Riedel's lobe. This is fairly common and is a downward tongue-like projection of the right lobe of the liver [10]. It is a simple anatomical variation; it is not a true accessory lobe. The condition is more frequent in women. It is detected as a mobile tumour on the right side of the abdomen which descends with the diaphragm on inspiration. It may come down as low as the right iliac region. It is easily mistaken for other tumours in this area, especially a visceroptotic right kidney. It does not cause symptoms and treatment is not required. Rarely, it is a site for metastasis or primary hepatocellular carcinoma. Scanning may be used to identify Riedel's lobe and other anatomical abnormalities.

Cough furrows on the liver. These are vertical grooves on the convexity of the right lobe. They are one to six in number and run anteroposteriorly, being deeper posteriorly. These represent diaphragmatic sulci and fissures produced by pressure exerted by diaphragmatic muscle on peripheral structurally weak liver parenchymal zones associated with watershed vascular distribution [11]. Chronic cough produces such pressure.

Corset liver. This is a horizontal fibrotic furrow or pedicle on the anterior surface of one or both lobes of the liver

just below the costal margin [12]. The mechanism is unknown, but it affects elderly women who have worn corsets for many years. It presents as an abdominal mass in front of and below the liver and is isodense with the liver. It may be confused with a hepatic tumour.

Lobar atrophy. Interference with the portal supply or biliary drainage of a lobe may cause atrophy. There is usually hypertrophy of the opposite lobe. Left lobe atrophy found at post-mortem or during scanning is not uncommon and is probably related to reduced blood supply via the left branch of the portal vein. The lobe is decreased in size with thickening of the capsule, fibrosis and prominent biliary and vascular markings. The vascular problem may date from the time of birth. Loss of left lobe parenchyma in this instance develops by the process of ischaemic extinction due to impaired flow from the affected large portal vein branch. Replacement fibrosis ensues. This large vessel extinction process should be distinguished from cirrhosis in which the entire liver is affected by numerous intrahepatic and discrete extinction lesions, which affect small hepatic veins and portal vein branches during the course of inflammation and fibrosis. Hence, in cirrhosis the entire liver surface is diffusely converted to regenerative parenchymal nodules surrounded by fibrosis.

Obstruction to the right or left hepatic bile duct by benign stricture or cholangiocarcinoma is now the most common cause of lobar atrophy [13]. The alkaline phosphatase is usually elevated. The bile duct may not be dilated within the atrophied lobe. Relief of obstruction may reverse the changes if cirrhosis has not developed. Distinction between a biliary and portal venous aetiology may be made using technetium-labelled iminodiacetic acid (IDA) and colloid scintiscans. A small lobe with normal uptake of IDA and colloid is compatible with a portal aetiology. Reduced or absent uptake of both isotopes favours biliary disease.

Agenesis of the right lobe [14]. This rare lesion may be an incidental finding associated, probably coincidentally, with biliary tract disease and also with other congenital abnormalities. It can cause presinusoidal portal hypertension. The other liver segments undergo compensatory hypertrophy. It must be distinguished from lobar atrophy due to cirrhosis or hilar cholangiocarcinoma.

Situs inversus (SI). In the exceedingly rare *SI totalis* or *abdominalis* the liver is located in the left hypochondrium and may be associated with other anomalies including biliary atresia, polysplenia syndrome, aberrant hepatic artery anatomy and absent portal vein. Hepatic surgery (partial hepatectomy, liver transplantation) is feasible, but complex. Other conditions associated with displacement of the liver from its location in

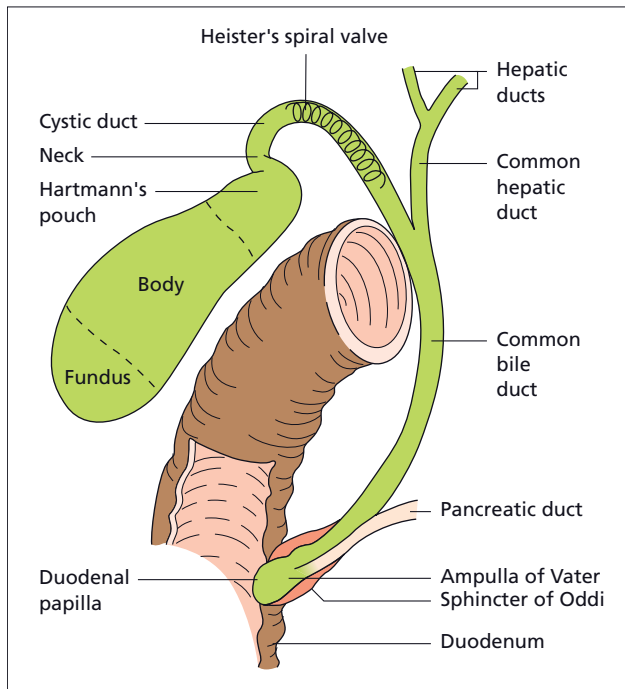


Fig. 1.6. Gallbladder and biliary tract.

the right upper quadrant include *congenital diaphragmatic hernias*, *diaphragmatic eventration* and *omphalocele*.

Anatomical abnormalities of the gallbladder and biliary tract are discussed in Chapter 12.

Anatomy of the biliary tract (Fig. 1.6)

The *right* and *left hepatic ducts* emerge from the liver and unite in the *porta hepatis* to form the *common hepatic duct*. This is soon joined by the *cystic duct* from the gallbladder to form the *common bile duct*.

The *common bile duct* runs between the layers of the lesser omentum, lying anterior to the portal vein and to the right of the hepatic artery. Passing behind the first part of the duodenum in a groove on the back of the head of the pancreas, it enters the second part of the duodenum. The duct runs obliquely through the posteromedial wall, usually joining the main pancreatic duct to form the *ampulla of Vater* (c. 1720). The ampulla makes the mucous membrane bulge inwards to form an eminence, the *duodenal papilla*. In about 10–15% of subjects the bile and pancreatic ducts open separately into the duodenum.

The dimensions of the common bile duct depend on the technique used. At operation it is about 0.5–1.5 cm in diameter. Using ultrasound the values are less, the common bile duct being 2–7 mm, with values greater than 7 mm being regarded as abnormal. Using endoscopic cholangiography, the duct diameter is usually

less than 11 mm, although after cholecystectomy it may be more in the absence of obstruction.

The duodenal portion of the common bile duct is surrounded by a thickening of both longitudinal and circular muscle fibres derived from the intestine. This is called the *sphincter of Oddi* (c. 1887).

The *gallbladder* is a pear-shaped bag 9 cm long with a capacity of about 50 mL. It always lies above the transverse colon, and is usually next to the duodenal cap overlying, but well anterior to, the right renal shadow. The fundus is the wider end and is directed anteriorly; this is the part palpated when the abdomen is examined. The body extends into a narrow neck which continues into the cystic duct. The *valves of Heister* are spiral folds of mucous membrane in the wall of the cystic duct and neck of the gallbladder. *Hartmann's pouch* is a sacculation at the neck of the gallbladder; this is a common site for a gallstone to lodge.

The mucosa is in delicate, closely woven folds; instead of glands there are indentations of mucosa which usually lie superficial to the muscle layer. Increased intraluminal pressure in chronic cholecystitis results in formation of branched, diverticula-like invaginations of the mucosa which reach into the muscular layer, termed *Rokitansky–Aschoff sinuses*. There is no submucosa or muscularis mucosae. The gallbladder wall consists of a loose connective tissue lamina propria and muscular layer containing circular, longitudinal and oblique muscle bundles without definite layers, the muscle being particularly well developed in the neck and fundus. The outer layers are the subserosa and serosa. The distensible normal gallbladder fills with bile and bile acids secreted by the liver, concentrates the bile through absorption of water and electrolytes and with meals contracts under the influence of cholecystokinin (acting through preganglionic cholinergic nerves) to empty bile into the duodenum.

Blood supply. The gallbladder receives blood from the *cystic artery*. This branch of the hepatic artery is large, tortuous and variable in its anatomical relationships. Smaller blood vessels enter from the liver through the gallbladder fossa. The venous drainage is into the *cystic vein* and thence into the portal venous system. Attention to the vascular-biliary anatomy in the reference area known as *Calot's triangle* (bordered by the cystic duct, common hepatic duct and lower edge of the liver) reduces the risk of vascular injuries and potential biliary strictures. Most bile duct injuries occur at cholecystectomy (incidence of <1.3% for either open or laparoscopic cholecystectomy). After liver transplantation 10–33% of patients may develop biliary complications, of which biliary stricture is the most important.

The arterial blood supply to the supraduodenal bile duct is generally by two main (axial) vessels which run

beside the bile duct. These are supplied predominantly by the retroduodenal artery from below, and the right hepatic artery from above, although many other vessels contribute. This pattern of arterial supply would explain why vascular damage results in bile duct stricture [15].

Lymphatics. There are many lymphatic vessels in the submucous and subperitoneal layers. These drain through the cystic gland at the neck of the gallbladder to glands along the common bile duct, where they anastomose with lymphatics from the head of the pancreas.

Nerve supply. The gallbladder and bile ducts are liberally supplied with nerves, from both the parasympathetic and the sympathetic system.

Surface marking (Figs 1.7, 1.8)

Liver. The upper border of the right lobe is on a level with the 5th rib at a point 2 cm medial to the right midclavicular line (1 cm below the right nipple). The upper border of the left lobe corresponds to the upper border of the 6th rib at a point in the left midclavicular line (2 cm below the left nipple). Here only the diaphragm separates the liver from the apex of the heart.

The lower border passes obliquely upwards from the 9th right to the 8th left costal cartilage. In the right nipple line it lies between a point just under to 2 cm below the costal margin. It crosses the midline about midway between the base of the xiphoid and the umbilicus and the left lobe extends only 5 cm to the left of the sternum.

Gallbladder. Usually the fundus lies at the outer border of the right rectus abdominis muscle at its junction with the right costal margin (9th costal cartilage) (Fig. 1.8). In

an obese subject it may be difficult to identify the outer border of the rectus sheath and the gallbladder may then be located by the Grey–Turner method. A line is drawn from the left anterior superior iliac spine through the umbilicus; its intersection with the right costal margin indicates the position of the gallbladder. These guidelines depend upon the individual's build. The fundus may occasionally be found below the iliac crest.

Methods of examination

Liver. The lower edge should be determined by palpation just lateral to the right rectus muscle. This avoids mistaking the upper intersection of the rectus sheath for the liver edge.

The liver edge moves 1–3 cm downwards with deep inspiration. It is usually palpable in normal subjects

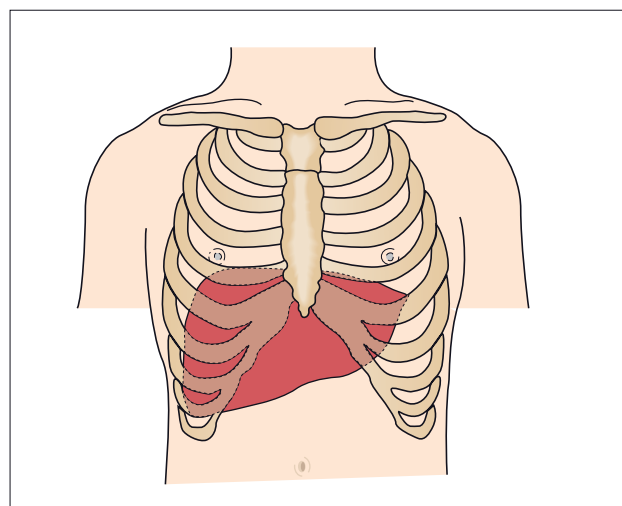


Fig. 1.7. The surface marking of the liver.

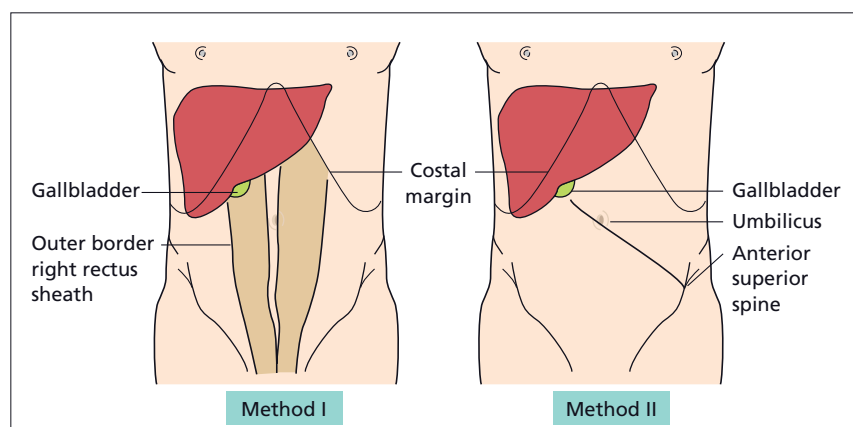


Fig. 1.8. Surface markings of the gallbladder. Method I: the gallbladder is found where the outer border of the right rectus abdominis muscle intersects the 9th costal cartilage. Method II: a line drawn from the left anterior superior iliac spine through the umbilicus intersects the costal margin at the site of the gallbladder.

inspiring deeply. The edge may be tender, regular or irregular, firm or soft, thickened or sharp. The lower edge may be displaced downwards by a low diaphragm, for instance in emphysema. Movements may be particularly great in athletes or singers. Some patients with practice become very efficient at 'pushing down' the liver. The normal spleen can become palpable in similar fashion. Common causes of a liver palpable below the umbilicus are malignant deposits, polycystic or Hodgkin's disease, amyloidosis, congestive cardiac failure and gross fatty change. Rapid change in liver size may occur when congestive cardiac failure is corrected, cholestatic jaundice relieved, or when severe diabetes is controlled. The surface can be palpated in the epigastrium and any irregularity or tenderness noted. An enlarged caudate lobe, as in the Budd–Chiari syndrome or with some cases of cirrhosis, may be palpated as an epigastric mass.

Pulsation of the liver, usually associated with tricuspid valvular incompetence, is felt by manual palpation with one hand behind the right lower ribs posteriorly and the other anteriorly on the abdominal wall.

The upper edge is determined by fairly heavy percussion passing downwards from the nipple line. The lower edge is recognized by very light percussion passing upwards from the umbilicus towards the costal margin. Percussion is a valuable method of determining liver size and is the only clinical method of determining a small liver.

The anterior liver span is obtained by measuring the vertical distance between the uppermost and lowermost points of hepatic dullness by percussion in the right midclavicular line. This is usually 12–15 cm. Direct percussion is as accurate as ultrasound in estimating liver span [16].

Friction may be palpable and audible, usually due to recent biopsy, tumour or perihepatitis. The venous hum of portal hypertension is audible between the umbilicus and the xiphisternum. An arterial murmur over the liver may indicate a primary liver cancer or acute alcoholic hepatitis.

Gallbladder. The gallbladder is palpable only when it is distended. It is felt as a pear-shaped cystic mass usually about 7 cm long. In a thin person, the swelling can sometimes be seen through the anterior abdominal wall. It moves downwards on inspiration and is mobile laterally but not downwards. The swelling is dull to percussion and directly impinges on the parietal peritoneum, so that the colon is rarely in front of it. Gallbladder dullness is continuous with that of the liver.

Abdominal tenderness should be noted. Inflammation of the gallbladder causes a positive *Murphy's sign*. This is the inability to take a deep breath when the examining fingers are hooked up below the liver edge. The inflamed

gallbladder is then driven against the fingers and the pain causes the patient to catch their breath.

The enlarged gallbladder must be distinguished from a *visceroptotic right kidney*. This, however, is more mobile, can be displaced towards the pelvis and has the resonant colon anteriorly. A *regenerative* or *malignant nodule* feels much firmer.

Imaging. A plain film of the abdomen, including the diaphragms, may be used to assess liver size and in particular to decide whether a palpable liver is due to actual enlargement or to downward displacement. On moderate inspiration the normal level of the diaphragm, on the right side, is opposite the 11th rib posteriorly and the 6th rib anteriorly.

Ultrasound, CT or MRI can be used to study liver size, shape and content.

Microanatomy of the liver

For over a century, many models of liver substructure have been proposed [17]. The most popular of these is the *lobule* introduced by Kiernan in 1833 as the basic architectural unit, based on pig dissections [18]. He described circumscribed, hexagonal lobules consisting of a central tributary of the hepatic vein (central vein) and at the periphery a portal tract containing the bile duct, portal vein radicle and hepatic artery branch. Cords (plates) of liver cells and blood-containing sinusoids extend between these two systems. The lobule has foundations in pig, camel, raccoon and polar bear livers, in which such hexagonal units are surrounded by interlobular connective tissue septa [19]. Such septa have no counterparts in human liver.

Stereoscopic reconstructions and scanning electron microscopy have shown the human liver as cords of liver cells radiating from a central vein, and interlaced in orderly fashion by sinusoids (Figs 1.9, 1.10). The terminal branches of the portal vein discharge their blood into the sinusoids and the direction of flow is determined by the higher pressure in the portal vein than in the central vein (or terminal hepatic venule)—see below.

The *portal tracts* are small connective tissue islands containing triads composed of the portal vein radicle, the hepatic arteriole and bile duct (Fig. 1.11). Portal tracts are surrounded by a limiting plate of liver cells. Histological sections of normal liver show portal tracts containing dyads as frequently as triads, with the portal vein being the most frequently absent element. Within each linear centimetre of liver tissue obtained at biopsy there are usually two interlobular bile ducts, two hepatic arteries and one portal vein per portal tract, with six full portal triads [20].

The liver has to be divided *functionally*. Traditionally, the unit is based on a central hepatic vein and its

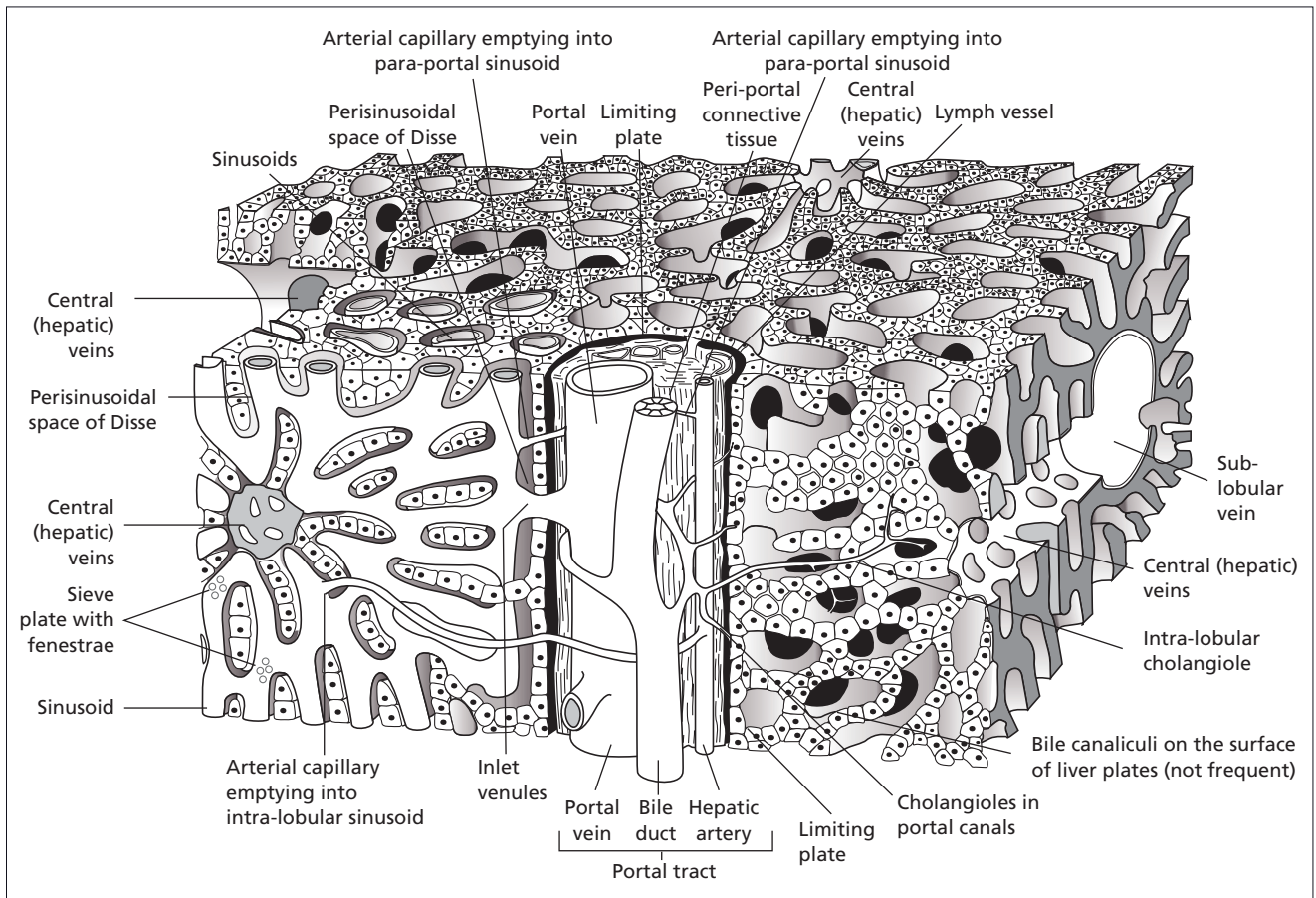


Fig. 1.9. The structure of the normal human liver.

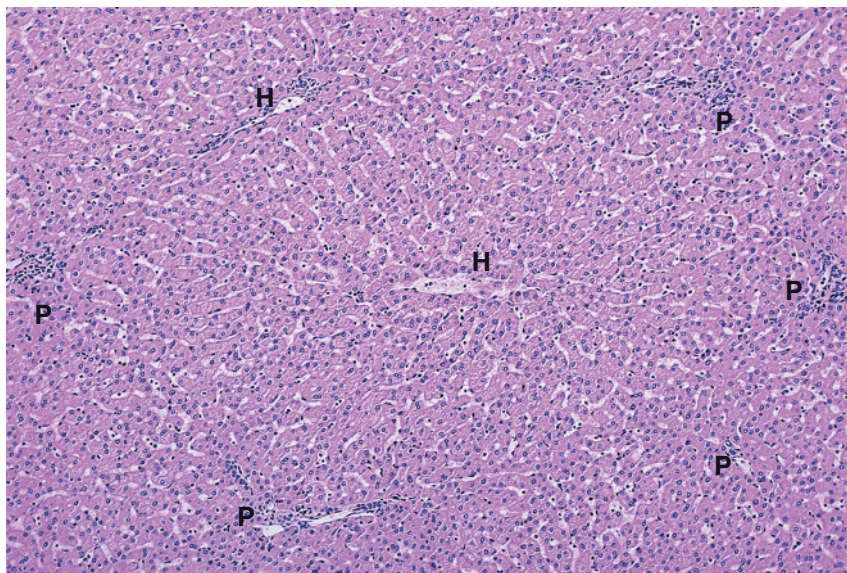


Fig. 1.10. Normal hepatic histology. H, terminal hepatic vein; P, portal tract. (H & E, $\times 60$.)

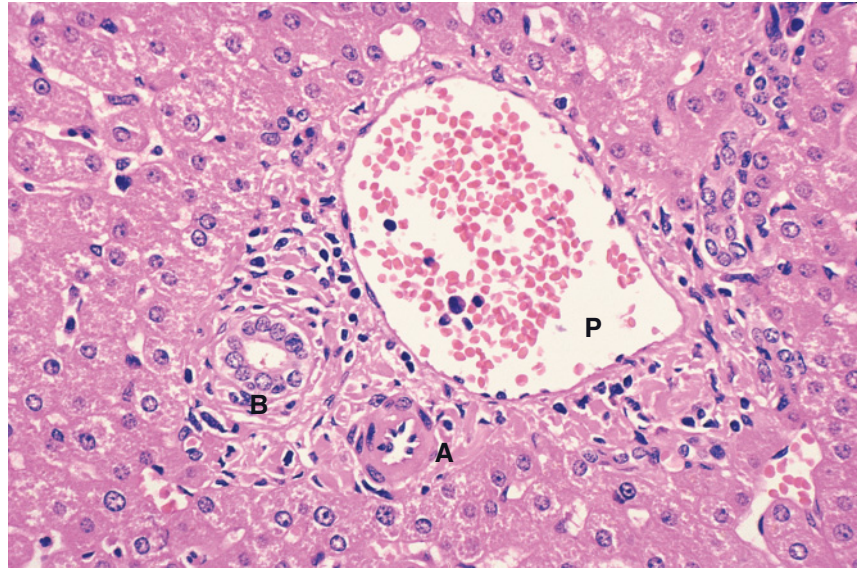


Fig. 1.11. Normal portal tract. A, hepatic artery; B, bile duct; P, portal vein. (H & E.)

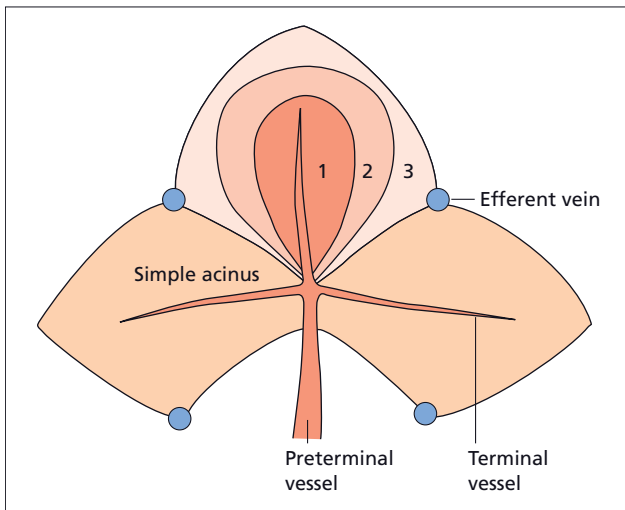


Fig. 1.12. The complex acinus according to Rappaport. Zone 1 is adjacent to the entry (portal venous) system. Zone 3 is adjacent to the exit (hepatic venous) system.

surrounding liver cells. However, Rappaport [21] envisages a series of functional *acini*, each centred on the portal tract with its terminal branch of portal vein, hepatic artery and bile duct (zone 1) (Figs 1.12, 1.13). These interdigitate, mainly perpendicularly, with terminal hepatic veins of adjacent acini. The circulatory peripheries of acini (adjacent to terminal hepatic veins) (zone 3) suffer most from injury, whether viral, toxic or anoxic. Bridging necrosis may extend from the periphery (acinar zone 1) to zone 3. The regions closer to the axis formed by afferent vessels and bile ducts survive longer and may later form the core from which regeneration will proceed. The contribution of each acinar zone to liver cell regeneration depends on the acinar location of damage [21].

The liver cells (*hepatocytes*) comprise about 60% of the liver. They are polygonal and approximately $30\mu\text{m}$ in diameter. The nucleus is single or, less often, multiple and divides by mitosis. The lifespan of liver cells is about 150 days in experimental animals. The hepatocyte has three surfaces: one facing the sinusoid and space of Disse, the second facing the canaliculus and the third facing neighbouring hepatocytes (Fig. 1.14). There is no basement membrane.

The sinusoids are lined by endothelial cells with small pores (fenestrae) for macromolecule diffusion from blood to hepatocytes. On the vascular side of the sinusoids are the phagocytic cells of the reticuloendothelial system (Kupffer cells) and pit cells with natural killer function.

There are approximately 202×10^3 cells in each milligram of normal human liver, of which 171×10^3 are parenchymal and 31×10^3 littoral (sinusoidal, including Kupffer cells).

The *space of Disse* between hepatocytes and sinusoidal endothelial cells contains a few collagen fibrils and the hepatic stellate cells, which have also been called fat-storing cells, Ito cells and lipocytes. These cells store vitamin A and when activated in disease become collagen-synthesizing myofibroblasts. The *hepatic lymphatics* are found in the periportal connective tissue and are lined throughout by endothelium. Tissue fluid seeps through the endothelium into the lymph vessels.

The branch of the *hepatic arteriole* forms a plexus around the bile ducts and supplies the structures in the portal tracts. It empties into the sinusoidal network at different levels. There are no direct hepatic arteriolar-portal venous anastomoses.

The excretory system of the liver begins with the *bile canaliculi* (Figs 1.14, 1.15). These are formed by

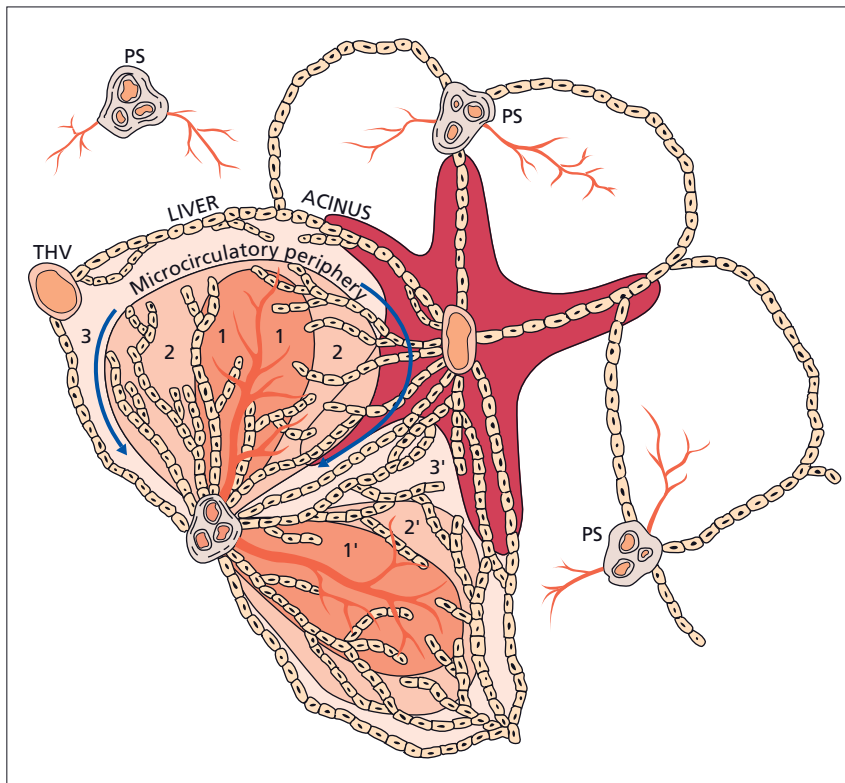


Fig. 1.13. Blood supply of the simple liver acinus, zonal arrangements of cells and the microcirculatory periphery. The acinus occupies adjacent sectors of the neighbouring hexagonal fields. Zones 1, 2 and 3, respectively, represent areas supplied with blood of first, second and third quality with regard to oxygen and nutrient content. These zones centre on the terminal afferent vascular branches, bile ductules, lymph vessels and nerves (PS) and extend into the triangular portal field from which these branches crop out. Zone 3 is the microcirculatory periphery of the acinus since its cells are as remote from their own afferent vessels as from those of adjacent acini. The *perivenular* area is formed by the most peripheral portions of zone 3 of several adjacent acini. In injury progressing along this zone, the damaged area assumes the shape of a starfish (darker tint around a terminal hepatic venule, THV, in the centre). 1–3, microcirculatory zones; 1'–3', zones of neighbouring acinus [21].

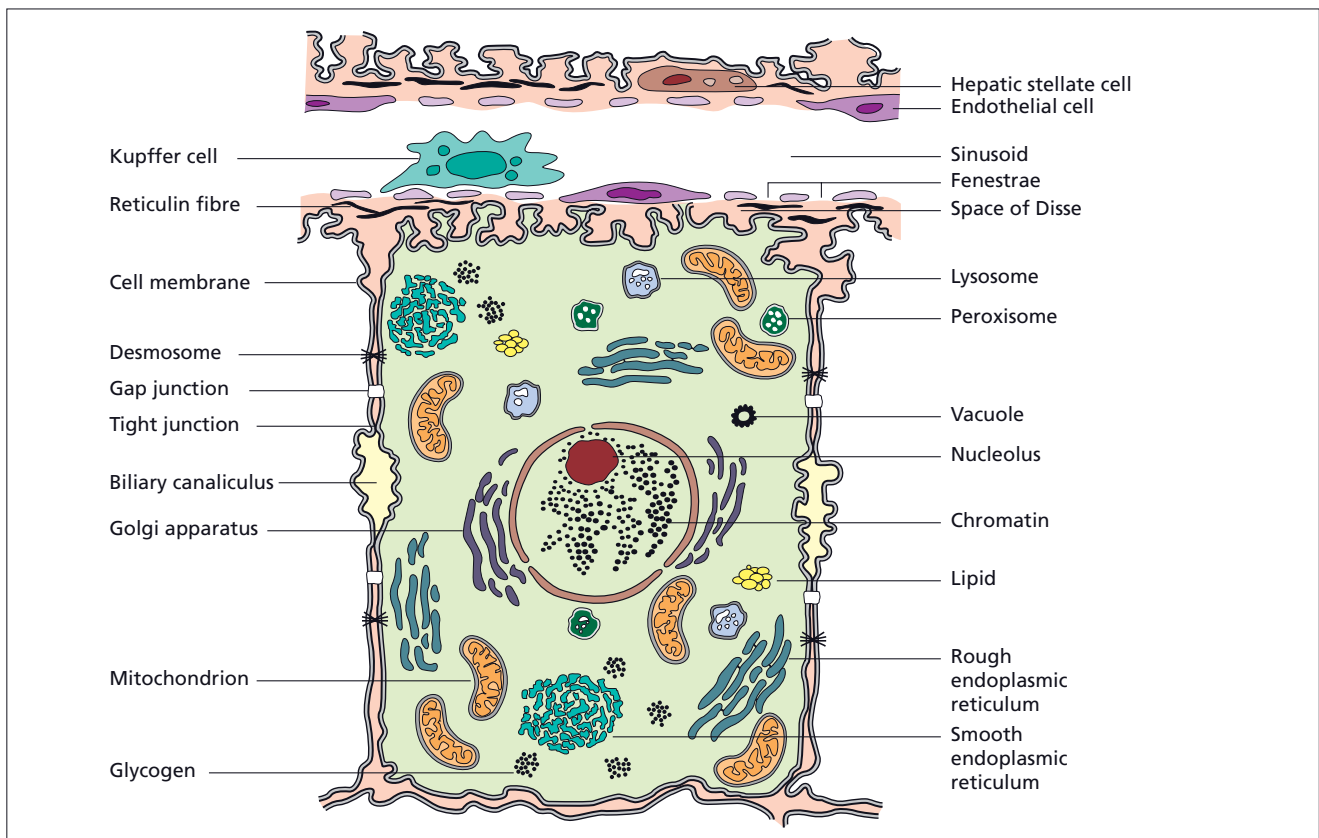


Fig. 1.14. The organelles of the liver cell.

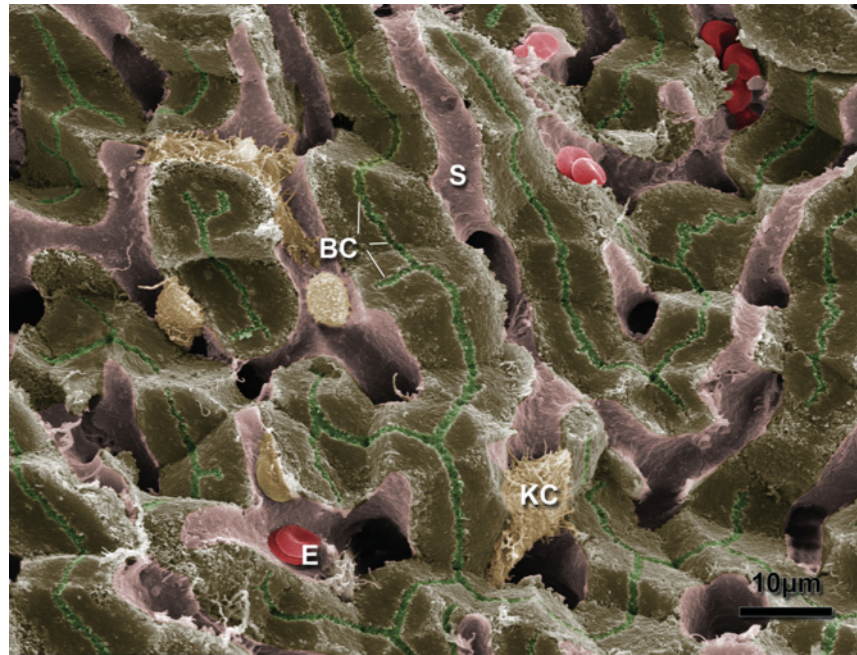


Fig. 1.15. Colourized scanning electron micrograph of liver showing hepatocytes in green, sinusoids (S) in light pink, erythrocytes (E), Kupffer cells (K) and bile canaliculi (BC). (Courtesy of Ms Jackie Lewin, UCL Medical School, London.)

modifications of the contact surfaces of liver cells and are covered by microvilli. The plasma membrane is reinforced by microfilaments forming a supportive cytoskeleton. The canalicular surface is sealed from the rest of the intercellular surface by junctional complexes including tight junctions, gap junctions and desmosomes. The intralobular canalicular network drains into the canals of Hering lined by low cuboidal epithelium which connect via short bile ductules to the larger terminal bile ducts within the portal tracts. Bile ducts are classified into small (less than 100 μm in diameter), medium (about 100 μm) and large (more than 100 μm) calibre types.

Hepatic ultrastructure (electron microscopy) and organelle functions

Hepatocytes (Figs 1.14–1.17)

The liver cell margin is straight except for a few anchoring pegs (desmosomes). From it, equally sized and spaced microvilli project into the lumen of the bile canaliculi. Along the sinusoidal border, irregularly sized and spaced microvilli project into the perisinusoidal tissue space. The microvillous structure indicates active secretion or absorption, mainly of fluid.

The *nucleus* has a double contour with pores allowing interchange with the surrounding cytoplasm. Human liver after puberty contains tetraploid nuclei and, at about age 20, in addition, octoploid nuclei are found. Increased polyploidy has been regarded as precancerous. In the chromatin network one or more nucleoli are embedded.

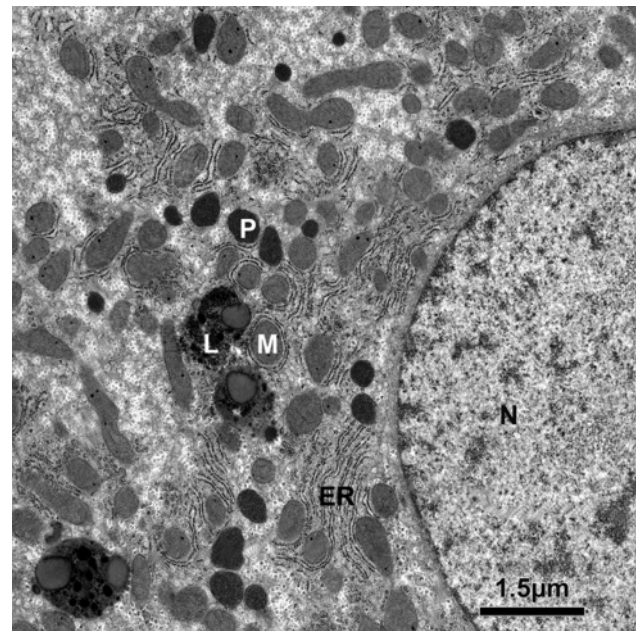


Fig. 1.16. Electron microscopic appearances of part of a normal human liver cell. N, nucleus; M, mitochondrion; P, peroxisome; L, lysosome; ER, rough endoplasmic reticulum. (Courtesy of Ms. Jackie Lewin, UCL Medical School, London.)

The *mitochondria* also have a double membrane, the inner being invaginated to form grooves or cristae. An enormous number of energy-providing processes take place within them, particularly those involving oxidative phosphorylation. They contain many enzymes,

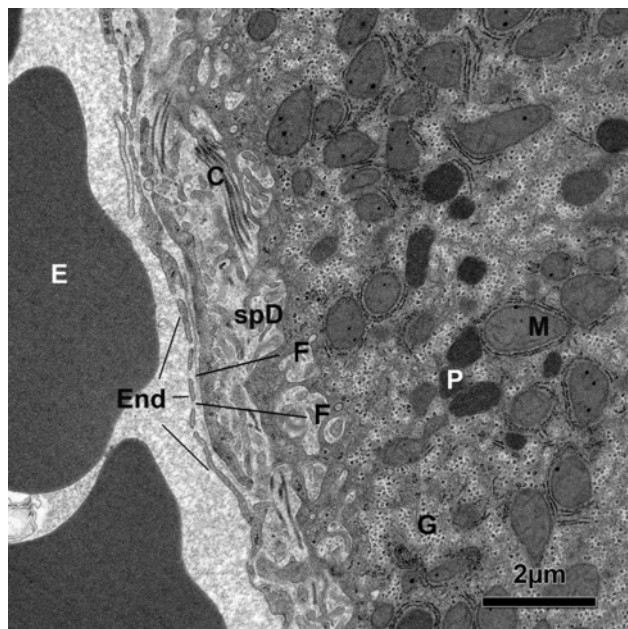


Fig. 1.17. Transmission electron micrograph showing an hepatocyte (right) with its microvillus membrane surface facing onto the space of Disse (spD) and the overlying endothelium (End). The endothelium has fenestrations (F) and there are a few collagen bundles (C) in the space of Disse. Erythrocytes (E) are present within the sinusoidal lumen. M, mitochondrion; P, peroxisome; G, glycogen granules. (Courtesy of Ms Jackie Lewin, UCL Medical School, London.)

particularly those of the citric acid cycle and those involved in β -oxidation of fatty acids. They can transform energy so released into adenosine diphosphate (ADP). Haem synthesis occurs here.

The *rough endoplasmic reticulum* (RER) is seen as lamellar structures lined by ribosomes. These are responsible for basophilia under light microscopy. They synthesize specific proteins, particularly albumin, those used in blood coagulation and enzymes. They may adopt a helix arrangement, as polysomes, for co-ordination of this function. Glucose-6-phosphatase is synthesized. Triglycerides are synthesized from free fatty acids and complexed with protein to be secreted by exocytosis as lipoprotein. The RER may participate in glycogenesis.

The *smooth endoplasmic reticulum* (SER) forms tubules and vesicles. It contains the microsomes. It is the site of bilirubin conjugation and the detoxification of many drugs and other foreign compounds (P450 systems). Steroids are synthesized, including cholesterol and the primary bile acids, which are conjugated with the amino acids glycine and taurine. The SER is increased by enzyme inducers such as phenobarbital.

Peroxisomes are versatile organelles, which have complex catabolic and biosynthetic roles, and are distributed near the SER and glycogen granules. Peroxisomal

enzymes include simple oxidases, β -oxidation cycles, the glyoxalate cycle, ether lipid synthesis, and cholesterol and dolichol biosynthesis. Several disorders of peroxisomal function are recognized of which Zellweger syndrome is one [22]. Endotoxin severely damages peroxisomes [23].

The *lysosomes* are membrane-bound, electron-dense bodies adjacent to the bile canaliculi. They contain many hydrolytic enzymes which, if released, could destroy the cell. They are the site of deposition of ferritin, lipofuscin, bile pigment, copper and senescent organelles.

The *Golgi apparatus* consists of a system of particles and vesicles, again lying near the canaliculus. It may be regarded as a 'packaging' site before excretion into the bile. This entire group of lysosomes, microbodies and Golgi apparatus is a means of sequestering any material which is ingested and has to be excreted, secreted or stored for metabolic processes in the cytoplasm. The Golgi apparatus, lysosomes and canaliculi are concerned in cholestasis (Chapter 11).

The intervening cytoplasm contains granules of glycogen, lipid and ferritin.

The *cytoskeleton* supporting the hepatocyte consists of microtubules, microfilaments and intermediate filaments [24]. Microtubules contain tubulin and control subcellular mobility, vesicle movement and plasma protein secretion. Microfilaments are made up of actin, are contractile and are important for the integrity and motility of the canaliculus and for bile flow. Intermediate filaments are elongated branched filaments comprising cytokeratins [1]. They extend from the plasma membrane to the perinuclear area and are fundamental for the stability and spatial organization of the hepatocyte. They become disrupted or lost with hepatocellular injury by alcohol, lipid peroxidation by-products and ischaemia [25].

Sinusoidal cells

The sinusoidal cells (endothelial cells, Kupffer cells, hepatic stellate cells and pit cells) form a functional and histological unit together with the sinusoidal aspect of the hepatocyte [26]. These cells interact via cytokines and other signalling mechanisms [27,28]. The close structural relationship of sinusoidal cells to hepatic cords is evident on transmission (Fig. 1.17) and scanning electron microscopy (Fig. 1.15).

Endothelial cells line the sinusoids and have fenestrae, which provide a graded barrier between the sinusoid and space of Disse (Fig. 1.18). The Kupffer cells anchor on the endothelium by their cytoplasmic projections.

The hepatic stellate cells lie in the space of Disse between the hepatocytes and the endothelial cells (Fig. 1.19). *Disse's space* contains tissue fluid which flows outwards into lymphatics in the portal zones. When sinu-