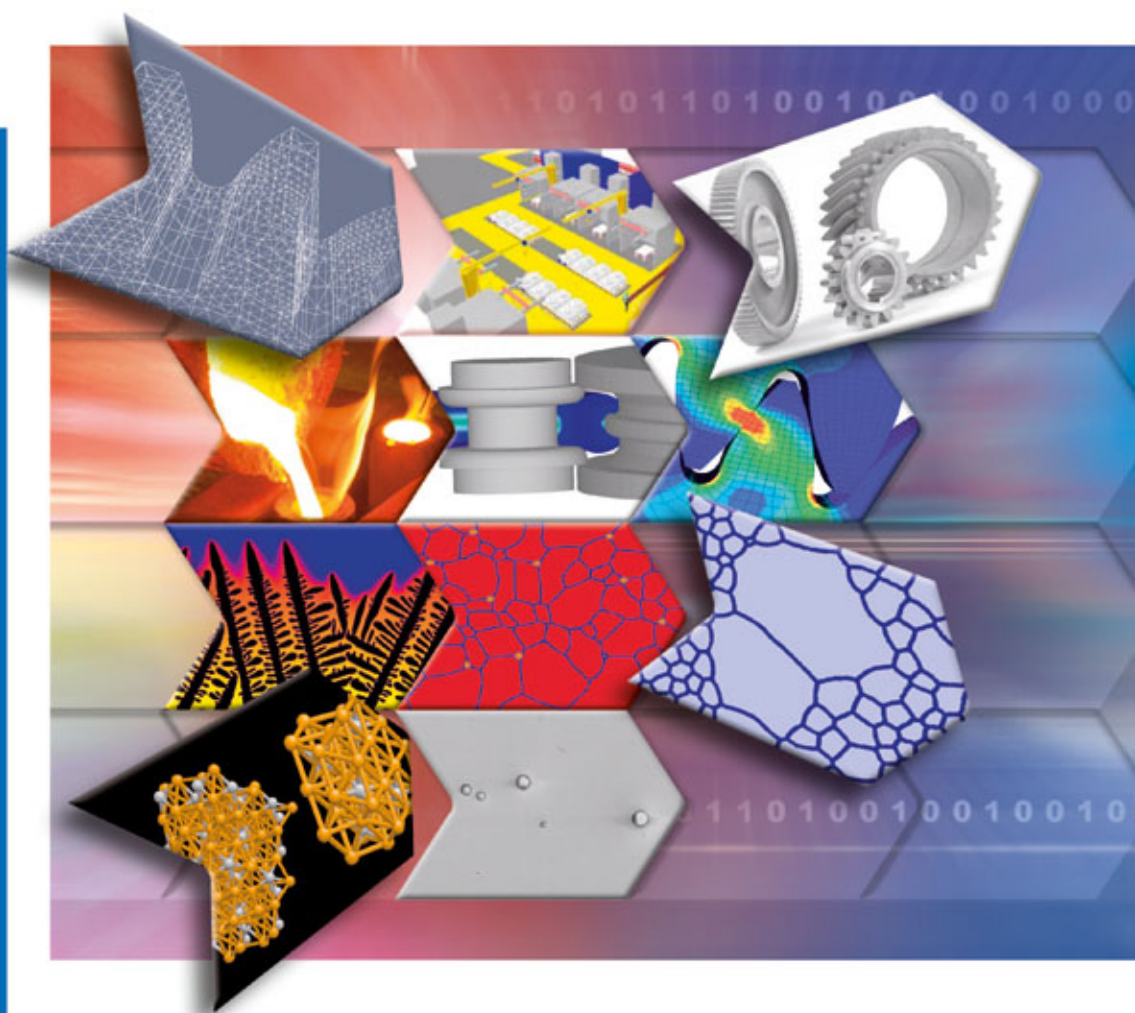


Edited by G. J. Schmitz and U. Prahl

 WILEY-VCH

Integrative Computational Materials Engineering

Concepts and Applications
of a Modular Simulation Platform



Edited by
Georg J. Schmitz and Ulrich Prah

**Integrative Computational
Materials Engineering**

Related Titles

Vaz Junior, M., de Souza Neto, E. A.,
Munoz-Rojas, P. A. (Eds.)

Advanced Computational Materials Modeling

From Classical to Multi-Scale Techniques

2011

ISBN: 978-3-527-32479-8

Dubois, J.-M., Belin-Ferré, E. (Eds.)

Complex Metallic Alloys Fundamentals and Applications

2011

ISBN: 978-3-527-32523-8

Roters, F., Eisenlohr, P., Bieler, T. R.,
Raabe, D.

Crystal Plasticity Finite Element Methods

in Materials Science and Engineering

2010

ISBN: 978-3-527-32447-7

Breitkopf, P., Filomeno, C. R. (Eds.)

Design Optimization in Computational Mechanics

2010

ISBN: 978-1-84821-138-4

Berlioz, A., Trompette, P.

Solid Mechanics using the Finite Element Method

2010

ISBN: 978-1-84821-191-9

van Santen, R. A., Sautet, P. (Eds.)

Computational Methods in Catalysis and Materials Science An Introduction for Scientists and Engineers

2009

ISBN: 978-3-527-32032-5

Edited by Georg J. Schmitz and Ulrich Prahl

Integrative Computational Materials Engineering

Concepts and Applications of a Modular
Simulation Platform



**WILEY-
VCH**

WILEY-VCH Verlag GmbH & Co. KGaA

The Editors

Dr.rer.nat. Georg J. Schmitz

RWTH Aachen University
Access e.V.
Intzestr. 5
52072 Aachen
Germany

Dr. Ulrich Prahl

RWTH Aachen University
Department of Ferrous
Metallurgy
Intzestr. 1
52072 Aachen
Germany

All books published by **Wiley-VCH** are carefully produced. Nevertheless, authors, editors, and publisher do not warrant the information contained in these books, including this book, to be free of errors. Readers are advised to keep in mind that statements, data, illustrations, procedural details or other items may inadvertently be inaccurate.

Library of Congress Card No.: applied for

British Library Cataloguing-in-Publication Data

A catalogue record for this book is available from the British Library.

Bibliographic information published by the Deutsche Nationalbibliothek

The Deutsche Nationalbibliothek lists this publication in the Deutsche Nationalbibliografie; detailed bibliographic data are available on the Internet at <<http://dnb.d-nb.de>>.

© 2012 Wiley-VCH Verlag & Co. KGaA, Boschstr. 12, 69469 Weinheim, Germany

All rights reserved (including those of translation into other languages). No part of this book may be reproduced in any form – by photoprinting, microfilm, or any other means – nor transmitted or translated into a machine language without written permission from the publishers. Registered names, trademarks, etc. used in this book, even when not specifically marked as such, are not to be considered unprotected by law.

Print ISBN: 978-3-527-33081-2

ePDF ISBN: 978-3-527-64612-8

ePub ISBN: 978-3-527-64611-1

mobi ISBN: 978-3-527-64610-4

oBook ISBN: 978-3-527-64609-8

Cover Design Adam-Design, Weinheim, Germany

Typesetting Laserwords Private Limited, Chennai, India

Printing and Binding betz-druck GmbH, Darmstadt, Germany

Contents

List of Contributors XI

Preface XV

Part I Concepts 1

1	Introduction	3
	<i>Georg J. Schmitz and Ulrich Prah</i>	
1.1	Motivation	3
1.2	What Is ICME?	4
1.2.1	The “Unaries”: I, C, M, and E	6
1.2.2	The “Binaries” ME, IM, IE, IC, CE, and CM	6
1.2.3	The “Ternary Systems”: CME, ICM, IME, ICE	9
1.2.4	The “Quaternary” System: “ICME”	10
1.3	Historical Development of ICME	11
1.4	Current Activities Toward ICME	13
1.5	Toward a Modular Standardized Platform for ICME	15
1.6	Scope of This Book	17
	References	18
2	Basic Concept of the Platform	21
	<i>Georg J. Schmitz and Ulrich Prah</i>	
2.1	Overview	21
2.2	Open Architecture	27
2.3	Modularity	28
2.3.1	Individual Modules	29
2.3.2	Bridging the Scales	30
2.3.3	Interface Modules/Services	32
2.3.4	Data Modules	33
2.4	Standardization	34
2.5	Web-Based Platform Operation	35
2.6	Benefits of the Platform Concept	36
2.6.1	Benefits for Software Providers	37
2.6.2	Benefits for Industrial Users	38

2.6.3	Benefits for Academia, Education, and Knowledge Management	39
2.7	Verification Using Test Cases	39
3	State-of-the-Art Models, Software, and Future Improvements	43
	<i>Markus Apel and Georg J. Schmitz</i>	
3.1	Introduction	43
3.2	Overview of Existing Models and Software	44
3.3	Requirements for Models and Software in an ICME Framework	48
3.3.1	Model Quality	50
3.3.2	Improving Numerical and Model Accuracy	50
3.3.3	Speeding Up Individual Models and Distributed Simulations	52
3.3.4	Information Integrity	56
3.4	Benefits of Platform Operations for Individual Models	56
3.4.1	Improved Quality of Initial Conditions	56
3.4.2	Improved Quality of Materials Data	57
3.4.3	Consideration of Local Effective Materials Properties	57
3.5	Strong and Weak Coupling of Platform Models	58
3.6	Conclusions	59
	References	59
4	Standardization	61
	<i>Stefan Benke and Georg J. Schmitz</i>	
4.1	Overview	61
4.2	Standardization of Geometry and Result Data	62
4.2.1	Extended File Header	64
4.2.2	Geometric Attributes	64
4.2.3	Field Data	65
4.3	Material Data	65
4.4	Application Programming Interface	70
4.4.1	USER_MATERIAL_TM Subroutine	72
4.4.2	USER_MATERIAL_HT Subroutine	74
4.4.3	USER_EXPANSION Subroutine	75
4.4.4	USER_PHASE_CHANGE Subroutine	76
4.5	Future Directions of Standardization	78
	References	79
5	Prediction of Effective Properties	81
	<i>Gottfried Laschet, Tatyana Kashko, Stephan Benke, Mehmet Öte, and Kirsten Bobzin</i>	
5.1	Introduction	81
5.2	Homogenization of Materials with Periodic Microstructure	82
5.2.1	Static Equilibrium of a Heterogeneous Material	82
5.2.2	Periodicity and Two-Scale Description	84
5.2.3	The Asymptotic Homogenization Method	85
5.3	Homogenization of Materials with Random Microstructure	88

5.3.1	Morphology Analysis and Definition of the RVE	89
5.3.2	Influence of the RVE Position on the Effective Elastic Properties	92
5.3.3	Stochastic Homogenization	94
5.4	Postprocessing of Macroscale Results: the Localization Step	96
5.5	Dedicated Homogenization Model: Two-Level Radial Homogenization of Semicrystalline Thermoplastics	98
5.5.1	Mechanical Properties of the Amorphous and Crystalline Phases	98
5.6	Virtual Material Testing	101
5.7	Tools for the Determination of Effective Properties	102
5.7.1	Homogenization Tool HOMAT and Its Preprocessor Mesh2Homat	102
5.7.2	Program Environment for Virtual Testing	104
5.8	Examples	104
5.8.1	Methods Comparison Based on a Benchmark	105
5.8.2	Austenite–Ferrite Phase Transformation of a Fe–C–Mn Steel	106
5.8.3	Application of the Stochastic Homogenization: Effective Thermal Conductivity of an Open-Cell Metallic Foam	110
5.9	Conclusions	112
	References	113
6	Distributed Simulations	117
	<i>Thomas Beer, Tobias Meisen, and Rudolf Reinhard</i>	
6.1	Motivation	117
6.2	The AixViPMaP [®] Simulation Platform Architecture	118
6.3	Data Integration	122
6.4	Web-Based User Interface for the Simulation Platform	125
	References	128
7	Visualization	131
	<i>Thomas Beer and Tobias Meisen</i>	
7.1	Motivation	131
7.2	Standardized Postprocessing	132
7.3	Integrated Visualization	134
7.4	Data History Tracking	139
	References	140
	Part II Applications	143
8	Test Case Line Pipe	145
	<i>Patrick Fayek, Hendrik Quade, Thomas Henke, Gottfried Laschet, Markus Apel, Eduardo Sambrano Rossiter, Markus Bambach, and Ulrich Prah</i>	
8.1	Introduction	145
8.2	Materials	146
8.3	Process	147
8.3.1	Overview of Process Chain	147

8.3.2	Reheating	148
8.3.3	Hot Rolling	148
8.3.4	Cooling and Phase Transformation	148
8.3.5	U- and O-Forming	149
8.3.6	Welding	150
8.4	Experiments	150
8.4.1	Dilatometer Experiments	150
8.4.2	Compression Tests to Determine Flow Curves and DRX Kinetics	151
8.4.3	Tensile Tests	152
8.4.4	Welding Experiments	152
8.5	Experimental Process Chain	153
8.6	Simulation Models and Results	155
8.6.1	Reheating	155
8.6.2	Hot Rolling	161
8.6.3	Cooling and Phase Transformation	164
8.6.4	U- and O-Forming	167
8.6.5	Welding	175
8.7	Conclusion and Benefits	183
	References	184
9	Test Case Gearing Component	187
	<i>Sergey Konovalov, Thomas Henke, Ulrich Jansen, Ario Hardjosuwito, Wolfram Lohse, Markus Bambach, and Ulrich Prah</i>	
9.1	Introduction	187
9.2	Materials	188
9.3	The Process Chain	189
9.3.1	Overview	189
9.3.2	Hot Rolling and Forging	190
9.3.3	FP Annealing	190
9.3.4	Machining	191
9.3.5	Carburizing	191
9.3.6	Laser Welding	192
9.4	Experimental Procedures and Results	192
9.4.1	Overview of Phenomena	192
9.4.2	Characterization of Dynamic Recrystallization and Grain Growth	193
9.4.3	Characterization of Phase Transformations	194
9.4.4	Investigation of the Particle Evolution along the Process Chain	195
9.4.5	Characterization of Welding Depth	196
9.5	Simulation Chain and Results	197
9.5.1	Overview of Simulation Chain	197
9.5.2	Macroscopic Process Simulations	201
9.5.3	Microscopic Simulations	212
9.6	Conclusions	217
	References	218

10	Test Case: Technical Plastic Parts	221
	<i>Walter Michaeli, Christian Hopmann, Thomas Baranowski, Gottfried Laschet, Barbara Heesel, Tim Arping, Kirsten Bobzin, Tatyana Kashko, and Mehmet Öte</i>	
10.1	Introduction	221
10.2	Material	222
10.2.1	Polypropylene	222
10.3	Process Chain	223
10.4	Modeling of the Phenomena along the Process Chain	224
10.4.1	Crystallization of Semicrystalline Thermoplastics	224
10.4.2	Formation of Molecular Orientations	227
10.4.3	Effective Mechanical Properties of Semicrystalline Thermoplastics	229
10.4.4	Macroscopic Mechanical Materials Behavior	231
10.5	Implementation of the Virtual Process Chain	236
10.5.1	SigmaSoft	236
10.5.2	SphaeroSim	236
10.5.3	HOMAT	236
10.5.4	Abaqus FEA	237
10.5.5	Simulation Chain	237
10.6	Experimental Methods	239
10.7	Results	241
10.7.1	Macroscopic Process Simulation	241
10.7.2	Microstructure Simulation	242
10.7.3	Effective Mechanical Properties	246
10.7.4	Macroscopic Part Behavior	251
10.8	Summary and Conclusion	253
	References	255
11	Textile-Reinforced Piston Rod	257
	<i>Britta Kuckhoff, Josef Klingele, Markus Linke, Thomas Gries, Kirsten Bobzin, Thomas Schläfer, Tatyana Kashko, and Mehmet Öte</i>	
11.1	Introduction	257
11.2	Experimental Process Chain	258
11.2.1	The Braiding Process	259
11.2.2	The Investment Casting Process	261
11.3	Simulation Chain	261
11.3.1	Overview	261
11.3.2	Simulation of the Braiding Process	262
11.3.3	Simulation of the Braiding Structure	266
11.3.4	Simulation of the Infiltration Process	267
11.3.5	Simulation of the Solidification Microstructure	268
11.3.6	Effective Anisotropic Material Properties	271
11.3.7	Effective Properties of the Component	276
11.4	Conclusion/Benefits	277
	References	278

12	Test Case Stainless Steel Bearing Housing	281
	<i>Stephan Freyberger, Stefan Benke, Hendrik Quade, and Jenny Rudnizki</i>	
12.1	Introduction	281
12.2	Materials	283
12.2.1	Overview	283
12.2.2	Thermophysical Properties	283
12.3	Processes	284
12.3.1	Overview of the Process Chain	284
12.3.2	The Casting Process	284
12.3.3	The Heat Treatment Process	285
12.3.4	The Machining Process	285
12.3.5	The Application	286
12.4	Phenomena	286
12.4.1	Overview of Phenomena to Be Modeled	286
12.4.2	Description of the Individual Phenomena	286
12.5	Simulation Chain	291
12.5.1	Simulation Tools	291
12.5.2	Simulation Flowchart	291
12.6	Results	293
12.6.1	Macroscopic Process Simulations	293
12.6.2	Microstructures	300
12.7	Conclusions/Benefits	303
	References	303
13	Future ICME	305
	<i>Ulrich Prah and Georg J. Schmitz</i>	
13.1	Imperative Steps	305
13.2	Lessons Learned	308
13.3	Future Directions	315
13.3.1	Education and Training	316
13.3.2	Internationalization, Professionalization, and Commercialization	316
13.3.3	Platform Development	318
13.4	Closing Remark	320
	References	321
	Index	323

List of Contributors

Markus Apel

RWTH Aachen University
Access e.V.
Intzestr. 5
52072 Aachen
Germany

Tim Arping

RWTH Aachen University
Institute of Plastics Processing
Pontstraße 49
52062 Aachen
Lanxess, Germany

Markus Bambach

RWTH Aachen University
Institute of Metal Forming
Intzestr. 10
52056 Aachen
Germany

Thomas Baranowski

RWTH Aachen University
Institute of Plastics Processing
Pontstraße 49
52062 Aachen
Germany

Thomas Beer

RWTH Aachen University
Institute for Scientific Computing
Center for Computing and
Communication
Seffenter Weg 23
52074 Aachen
Germany

Stefan Benke

RWTH Aachen University
Access e. V.
Intzestr. 5
52072 Aachen
Germany

now at

Cologne University of Applied
Sciences

Kirsten Bobzin

RWTH Aachen University
Surface Engineering Institute
Kackertstr. 15
52072 Aachen
Germany

Patrick Fayek

RWTH Aachen University
Department of Ferrous
Metallurgy
Intzestr. 1
52072 Aachen
Germany

Stephan Freyberger

RWTH Aachen University
Foundry Institute
Intzestr. 5
52072 Aachen
Germany

Thomas Gries

RWTH Aachen University
Institut für Textiltechnik
Otto-Blumenthal-Str. 1
52074 Aachen
Germany

Ario Hardjosuwito

RWTH Aachen University
Laboratory for Machine Tools and
Production Engineering
Steinbachstr. 53B
52074 Aachen
Germany

Barbara Heesel

RWTH Aachen University
Institute of Plastics Processing
Pontstraße 49
52062 Aachen
Germany

Thomas Henke

RWTH Aachen University
Institute of Metal Forming
Intzestr. 10
52056 Aachen
Germany

Christian Hopmann

RWTH Aachen University
Institute of Plastics Processing
Pontstraße 49
52062 Aachen
Germany

Ulrich Jansen

Fraunhofer Institute for Laser
Technology
Steinbachstr. 15,
52074 Aachen
Germany

Tatyana Kashko

RWTH Aachen University
Surface Engineering Institute
Kackertstr. 15
52072 Aachen
Germany

now at

Infineon AG

Josef Klingele

RWTH Aachen University
Institut für Textiltechnik
Otto-Blumenthal-Str. 1
52074 Aachen
Germany

Sergey Kononov

RWTH Aachen University
Department of Ferrous
Metallurgy
Intzestr. 1
52072 Aachen
Germany

Britta Kuckhoff

RWTH Aachen University
 Institut für Textiltechnik
 Otto-Blumenthal-Str. 1
 52074 Aachen
 Germany

Gottfried Laschet

RWTH Aachen University
 Access e. V.
 Intzestr. 5
 52072 Aachen
 Germany

Markus Linke

RWTH Aachen University
 Institut für Textiltechnik
 Otto-Blumenthal-Str. 1
 52074 Aachen
 Germany

now at

University of Applied Sciences
 Hamburg

Wolfram Lohse

RWTH Aachen University
 Laboratory for Machine Tools and
 Production Engineering
 Steinbachstr. 53B
 52074 Aachen
 Germany

Tobias Meisen

RWTH Aachen University
 Institute of Information
 Management in Mechanical
 Engineering and Center for
 Learning and Knowledge
 Management
 Dennewartstr. 27
 52068 Aachen
 Germany

Walter Michaeli

RWTH Aachen University
 Institute of Plastics Processing
 Pontstraße 49
 52062 Aachen
 Germany

Mehmet Öte

RWTH Aachen University
 Surface Engineering Institute
 Kackertstr. 15
 52072 Aachen
 Germany

Ulrich Prahl

RWTH Aachen University
 Department of Ferrous
 Metallurgy
 Intzestr. 1
 52072 Aachen
 Germany

Hendrik Quade

RWTH Aachen University
 Department of Ferrous
 Metallurgy
 Intzestr. 1
 52072 Aachen
 Germany

Rudolf Reinhard

RWTH Aachen University
 Institute of Information
 Management in Mechanical
 Engineering and Center for
 Learning and Knowledge
 Management
 Dennewartstr. 27
 52068 Aachen
 Germany

Eduardo Sambrano Rossiter

RWTH Aachen University
Welding and Joining Institute
Pontstr. 49
52062 Aachen
Germany

Jenny Rudnizki

RWTH Aachen University
Department of Ferrous
Metallurgy
Intzestr. 1
52072 Aachen
Germany

now at

Thyssen-Krupp Steel AG
Germany

Thomas Schläfer

RWTH Aachen University
Surface Engineering Institute
Kackertstr. 15
52072 Aachen
Germany

now at

GTV Verschleißschutz GmbH
Germany

Georg J. Schmitz

RWTH Aachen University
Access e.V.
Intzestr. 5
52072 Aachen
Germany

Preface

The idea of writing the present book about a platform for “integrative computational materials engineering” (ICME) evolved in the frame of a project inside the Cluster of Excellence “Integrative Production Technologies for High Wage Countries” being funded within the excellent initiative of the German federal government.

The initial title of the project was “Virtual Process Chains for Processing of Materials” and it aimed at establishing several descriptive simulation chains for different process scenarios and different materials. Almost immediately after starting the project in 2006, it turned out that a standardized, modular, open, and extendable simulation platform was mandatory for an efficient information exchange along the process chains as well as across the different length scales relevant in materials engineering.

The expertise and simulation tools of a number of institutes at the RWTH Aachen University being involved in the project provided the nucleus for setting up such a platform. This expertise covers the entire production chain from casting via hot and cold forming, heat treatments, joining, and coating to machining and comprises different materials such as metallic alloys (especially steels), composites, and polymers. It is complemented by the RWTH infrastructure and expertise in scientific computing and information management.

In detail, the following RWTH institutes have been involved: Foundry Institute (GI), Institute for Ferrous Metallurgy (IEHK), Welding and Joining Institute (ISF), Surface Engineering Institute (IOT), Institute for Metal Forming (IBF), Institute for Plastics Processing (IKV), Institute for Scientific Computing (SC), Department of Information Management in Mechanical Engineering (ZLW/IMA), Institute for Textile Technology (ITA), Fraunhofer Institute for Lasertechnology (ILT/NLD), and ACCESS.

During the course of the project, ICME has emerged as a new discipline integrating the “computational materials” research – dealing with length scales from atomistic up to the mesoscopic continuum scale of a microstructure – into engineering applications at the component or process scale. As the platform concept being developed in our view will be highly valuable for the emerging discipline of ICME and because it is hard to publish the details of a standardization scheme

along with examples of its applications in individual journal articles, we decided to summarize the concept for a “Platform for Integrative Computational Materials Engineering” within the present book. May it be useful and inspiring when reading it the first time and helpful when looking up details of the platform standard later.

Aachen, Germany
July 2011

Georg J. Schmitz
Ulrich Prahl

Part I

Concepts

1

Introduction

Georg J. Schmitz and Ulrich Prah

1.1

Motivation

The production of increasingly complex and valuable goods requires highly advanced, knowledge-based, tailored materials and components. In general, production goes along with planning and design activities to elaborate suitable process chains, leading to the desired functionality of the component while simultaneously meeting reasonable cost targets. This leads to a dilemma where efforts spent in planning and design have to be related to the final value of the product and, accordingly, the price a customer is willing to pay for it. The quantity any producer is interested in is the profit to be made. In a very simple view, this profit may be defined as

$$\text{profit} = \text{value} - \text{costs}$$

Value here may be interpreted as the price a third party is willing to pay for the product, while costs comprise the costs of anything needed to produce the particular product. Especially, activities for designing and planning the product and its production process on the basis of experiments and simulations have to be considered here as well. Thus, any optimization of the planning process (Figure 1.1) will lead to either a reduced effort in terms of time and costs to be spent in planning or to more reliable predictions, reducing the necessity of experimental tests for verification or even enabling a production at “first time right.” In particular cases, even the value of the product may be increased, for example by including a virtual documentation of its production process and its properties, which may be used by the customer to elaborate better predictions for the maintenance and life cycle when using the product. A reduction in maintenance intervals or an extended service time represents an added value for this customer. Another benefit might be drawn from extending the service life of a product by entering it into service with properties being sufficient – but not yet optimal – while expecting their further optimization under operational conditions.

A fundamental requirement to meet the ambitious objective of life-cycle modeling of products is an integrative description of the history of the component, starting

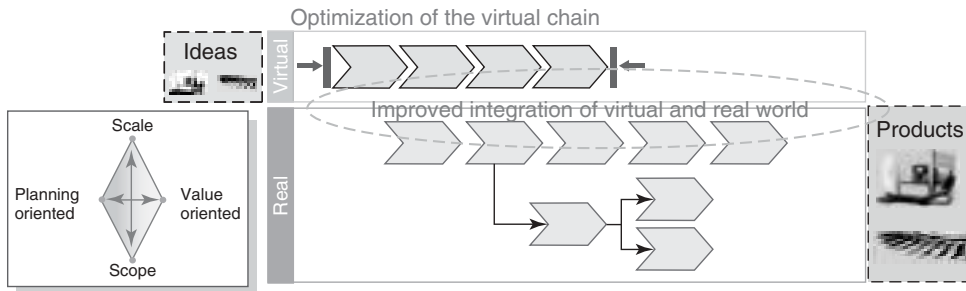


Figure 1.1 Efforts for planning production processes by simulations can be reduced by (i) optimization of individual modules and especially by (ii) improved communication between different modules. The real production process can be optimized, for example, by coupling the virtual world with on-line process control.

from the sound initial condition of a homogeneous, isotropic, and stress-free melt; continuing via subsequent processing steps; and eventually ending in the description of failure onset under operational load. The realization of such a modeling scenario is one of the key objectives of Integrated Computational Materials Engineering (ICME).

1.2

What Is ICME?

ICME or “Integrative Computational Materials Engineering,” as denoted in the title of this book, or “Integrated Computational Materials Engineering,” as used, for example, in Wikipedia – the slight differences in nomenclature already indicate that it is helpful to discuss the wording in all its aspects before entering the subject itself in more detail.

Looking at the four ingredients “I,” “C,” “M,” and “E,” materials scientists might discover an analogy with a quaternary phase diagram like for example the Fe–C–Mn–Si alloy system (Figure 1.2a–d). In order to construct a thermodynamic description of a quaternary alloy system one starts from the pure elements and continues via the binary systems. Those are then used to construct the ternary system and eventually ternary systems are used to construct the quaternary system. It is worthy to note that a ternary system might comprise information that cannot be obtained by a mere superposition of the binary subsystems.

Unveiling the complexity of the quaternary system, ICME will provide a common understanding of the wordings used in this book and best starts from exploiting the “unaries” I, C, M, and E first, before continuing via the “binaries” integrative computation (IC), integrative materials (IM), integrative engineering

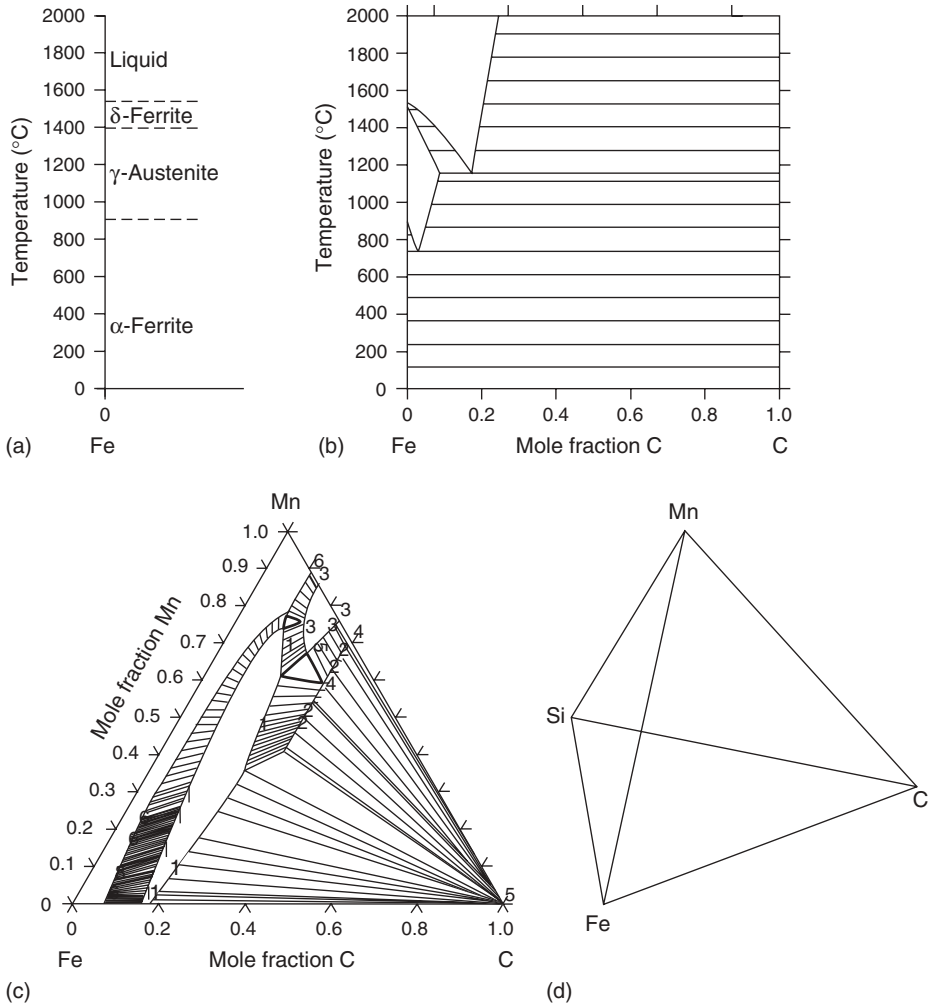


Figure 1.2 (a–d) Schematic thermodynamics of a quaternary alloy system (Fe–C–Mn–Si). (a) Unary phase diagram for pure Fe representing the left boundary for (b) the binary system Fe–C that itself for a given temperature ($T = 1200$ °C) is a boundary of (c) an isothermal section of

the ternary system Fe–C–Mn (calculated using Thermo-Calc). The quaternary diagram Fe–C–Mn–Si for a given temperature corresponds to a tetrahedron with four isothermal ternary sections (not shown in detail) forming the four faces of the tetrahedron (d).

(IE), computational materials (CM), computational engineering (CE), and materials engineering (ME) toward the ternaries integrated computational materials (ICM), integrative computational engineering (ICE), integrative materials engineering (IME), and computational materials engineering (CME).

1.2.1

The “Unaries”: I, C, M, and E

- **“I” like integrative, integrated, integration, integr*:** These expressions are found in a variety of contexts ranging from social life, mathematics, natural sciences, engineering, and others. Subjects of social integration are, for example, different cultures, and a key issue for a successful integration in social life is communication using a standard for information exchange – the common language. Integration in mathematics essentially means summing up different contributions to form a new entity – the integral. The difference between “integrated” and “integrative” may be seen in the fact that the first term implies the process of integration being already completed, while the second term considers it as still ongoing. With respect to integration in “time,” the word history seems adequate, while integration of knowledge over time leads to experience. Usually, an integrative view generates additional information as compared to the mere superposition of the individual parts. Specific aspects of integration in engineering, materials, and computation are discussed in the “binaries” IE, IM, and IC.
- **“C” like computational, computers, computation, comput*:** In short, anything that can be performed on a computer such as simulations, handling of large datasets, description of iterative processes, computer control and steering, storage of data and knowledge, mimicking of real processes in virtual reality, computer games, and e-learning. The computer hardware arrangements used for such purposes range from simple processors for simple control tasks to high-performance computing (HPC) for demanding simulation tasks and comprise methods such as parallel computing, grid/cloud computing, and many others. Nowadays, computer technology has reached a degree of maturity, being sufficient to handle large datasets and to tackle complex engineering tasks.
- **“M” like materials:** Classification of materials may be on the basis of different types such as plastics, rubbers, metallic alloys, ceramics, concrete, biomaterials, and wood. Other schemes hold for their individual shape such as bulk materials, thick films, thin films, coatings, or for specific functionalities such as conductors, isolators, structural materials, biocompatible materials, biodegradable materials, high-temperature materials, shape memory materials, self-healing materials, and many, many others.
- **“E” like engineering:** All activities related to design, construction, manufacture; production, assembly, operation and repair/recycling of materials, components, and systems, for example, for consumables, investment goods, public infrastructure, or exploitation of raw materials and resources. Engineering draws on fundamental understanding of phenomena in order to make them applicable for use.

1.2.2

The “Binaries” ME, IM, IE, IC, CE, and CM

The sequence of the description of the “binaries” has been selected according to the relevance for this book, meaning that those binaries without “C” are treated

first because they historically have been present before the availability of computers and thus form an initial state especially for their later ternaries comprising a “C.”

“ME” Like Materials Engineering or Engineering of Materials Any efforts aimed at influencing, controlling, and tailoring the properties of materials, especially for technical applications such as “engineering materials.” These properties are largely determined by the microstructure of the material, which itself is the result of a subtle interplay of its chemical composition and the entire history of its manufacturing process. Typical ME parameters comprise grain size, grain boundaries, local and global crystallographic orientations (“texture,”), phase fractions, precipitates, dislocations and defects, and their arrangement in the microstructure. Other relevant quantities especially are the concentrations of the individual chemical elements at the scale of the microstructure – the so-called microsegregation – and their variation across the entire component, the macrosegregation. Segregations do contribute to the mechanical properties in terms of solid solution hardening. Their major impact, however, is in their role in determining the further evolution of the microstructure such as the formation or non-formation of precipitates during heat treatment.

Besides the alloy composition itself, a number of process parameters such as heating or cooling rates, dwell times in heat treatments, application of pressure and/or special atmospheric conditions, specific deformation and recrystallization procedures are especially used to control these ME parameters. External electric or magnetic fields, ultrasound agitation, and addition of numerous seeding particles for grain refinement or the use of only a single seed when aiming at a single crystal are some other methods to influence them. It should be noted that in special cases such as for amorphous materials with special properties, the design space for respective products is restricted, for example, to products being small in at least one dimension (powders, wires, foils), because reaching the amorphous state requires extremely high cooling rates, which can only be realized for thin products.

ME – even until the end of the twentieth century – has been based on skills, experience, special recipes, and traditions. Such traditions allowed the realization of exceptional properties by a well-defined sequence of dedicated process steps leading to special microstructures, for example, in ancient damascene swords. With the beginning of the twenty-first century, the availability of sufficient computer capacities and dedicated numerical models allowed for a deeper understanding of the underlying individual processes leading to a desired microstructure in the frame of “computational materials” and “integrative computational materials” (ICM) modeling, the latter being applied in the case of several processing steps. In this context, it is worthy to note that future efforts – in terms of time and resources – to elaborate a suitable process chain, including a well-suited set of parameters, can be drastically reduced as compared to the development of the above-mentioned damascene process, which took generations to evolve.

“IM” Like Integrative Materials Integrative Materials (IM) might be interpreted as materials combining the individual properties of several materials or integrating several functionalities in a material to form a new material with improved functionalities or properties. Thus, typical examples of IM would be metal-matrix composites such as fiber-reinforced or particle-reinforced metal-matrix composites; reinforced ceramics such as cermets, textile- or steel-reinforced concrete; and reinforced polymers such as CFC, and many others.

Besides arranging one material in the bulk matrix of another material, multilayers of different materials such as laminates or coatings can be considered as another type of IM, where, for example, a coating adds a “corrosion protection” (or an optical, a tribological, or an isolating) functionality to the “structural” (or electrical) functionality of the base material.

Whether such a composite material is considered as a product created by the combination of two different materials or whether it is interpreted as a new material with new effective properties is quite diffuse and frequently depends on its final application. It seems important to note that the properties of such a composite material cannot always be estimated as a weighted average of the individual properties. An important point is that the individual materials such as a technical metallic alloy may also be considered as “composites” being combined from several phases at the scale of their microstructure. Depending on the desired application, either detailed information about the different components/phases and their spatial distribution in the composite or an “effective property of the system” may represent the necessary resp. interesting and adequate description.

“IE” Like Integrative Engineering The term *integrative engineering* might be defined in different ways. It may be interpreted as a combination of different processes (“hybrid processes”), a combination of different technologies (“hybrid systems”), or combinations of a number of components (“system engineering”). Another aspect of IE aims at integrating an increasing number of functionalities in a decreasing system size, such as downsizing concepts in the automotive industry or integrated circuits in the electronics industry.

A modern aspect of IE is integrated production engineering, which is a holistic approach to production processes comprising the engineering of process and value chains from the basic level of understanding of materials and processes up to global production networks and all related logistics.

A success story of integrated production scenarios are platform concepts being essentially characterized by modularity and standardized interfaces. Such platforms, as, for example, platforms known from car manufacture, allow creation of individualized and customized products in spite of an underlying mass production process.

“IC” Like Integrative Computation In a similar sense, software integration in informatics is the combination of different software and/or hardware tools to form a new, more complex entity. Integration in this context may extend from full in-line integration, where the different tools directly interact at each time step, to handshake protocols, enabling an easy information transfer between different tools in a serial type of coupling. Although seemingly contradictory, “distributed”

computation is a special form of integrated computation, as distributed resources are combined to form an integrated computational network. Special examples are cloud computing or “Software as a Service” approaches. Integrated computation also refers to special computer architectures such as shared memory architectures or special postprocessing procedures like immersed visualization.

Future developments – as already shown by present Internet browsers – increasingly will take directions of data accumulation, data integration, data retrieval, and knowledge management. Especially for ICME, such a data management is most important for both storage and retrieval of simulation parameters, particularly for a virtual documentation of the component life cycle.

“CE” Like Computational Engineering All engineering tasks supported by computers form the area of “CE.” Engineering tasks, especially in the area of mechanical engineering such as design, construction, manufacture, production, assembly, and operation of components and systems, find their virtual counterparts in computational aided engineering (CAE) such as computer-aided design (CAD), computer-aided manufacture (CAM), virtual manufacturing systems (VMS), and finite element methods (FEMs).

Further aspects of production engineering such as factory planning and logistics are modeled on computers as well, for example, in the frame of condition-based factory planning (CBFP). CE of the materials-representing the basis for any production processes-and their properties proceeds in the areas of CM and CME.

“CM” Like Computational Materials A number of keywords can be listed to describe the aspects of CM science such as *ab initio* calculations, density functional theory (DFT), molecular dynamics, CALPHAD approach, and computational thermodynamics. Most of these methods aim at descriptions of equilibrium situations or at models at the atomistic length scale. Nonequilibrium situations are tackled using cellular automata, phase-field and phase-field-crystal approaches, crystal plasticity FEM [37], and many more. Several books by now have summarized and reviewed the subject as “computational thermodynamics” [1] or “computational materials” [2]. CM science has been further extended to simulations of engineering materials [3], somehow directly bridging to the ternary CME. Note that the abbreviation “CM” is also used for continuum mechanics, which would match computational materials (when performed at the scale of the microstructure) or computational engineering (when performed at the process/component and system scales).

1.2.3

The “Ternary Systems”: CME, ICM, IME, ICE

“CME” Like Computational Materials Engineering It is worthy to note that “engineering” in the CME context is rather understood as engineering the properties of

a material than engineering the properties of a component, product, or system. A number of books by now have been published on CME such as [3] or [4].

“ICM” Like Integrative Computational Materials Modeling The classical scope of ICM approaches (e.g., [5]) is the description of materials *evolution* in two directions of integration. The horizontal integration along the processing chain aims at through process modeling and eventually shall describe materials starting from the homogeneous liquid up to the final failure. The vertical integration is well known as the multiscale approach and aims at the description of the properties of the materials starting from the *ab initio* level of the Schrödinger equation and ending at the scale of the material and/or component. This scale bridging is based on the same approaches as CM and CME. Modern ICM developments accept that in many cases a full integration over all scales is neither possible nor mandatory. A scale-hopping approach is thus introduced, focusing on only those effects being relevant for the final process and material property design.¹⁾

“IME” Like Integrative Materials Engineering The abbreviation IME may be interpreted as either engineering of integrative materials or integrative engineering of materials. It does not contain a “C” and thus does not relate to “computational” approaches. Thus, either experimental or analytical methods (i) to engineer integrative materials such as composites or (ii) to engineer materials in an integrative approach may be understood here. Examples might be analytical approaches to calculate the properties of a composite by a mixture rule and empirical materials laws being derived from experimental information or experience-based tailoring of alloy compositions or process parameters. Respective models are extremely useful in the context of ICME in view of bridging gaps in the virtual chain, for speeding up individual simulation tools, for validation of simulation results, and many other aspects.

“ICE” Like Integrative Computational Engineering ICE might be understood as any combination of CE activities such as, for example, a virtual description of a production process comprising product design, machining of components, assembly and logistics, and even considering global markets providing the economic and ecologic boundary conditions for the respective component/product.

1.2.4

The “Quaternary” System: “ICME”

Summarizing the above interpretations, there is a discrepancy in the term *Engineering*, which is applied to a product/component on the one hand and to a specific material on the other hand. The adequate interpretation of “E” in ICME is focused on engineering of an entire component and its manufacture in the

1) Special Research Area “steel *ab initio*” at the RWTH Aachen University.

sense of “ICE,” with the engineering of the material eventually constituting the component in the sense of Materials Engineering (“ME” or “CME”) being only a very important part of the entire effort.

The focus of ICME is thus on engineering the properties of the component as a function of the *local properties of the material* inside the component [6]. These properties themselves have experienced an evolution and depend on the entire process history as well as on the shape of the component and the alloy composition. An instructive benchmark example for a successful ICME could be the prediction of the distortions of a transmission component, which are based on the eigenstrains within the component being influenced by almost each of the process steps during its manufacture and still reveal a dependence on the segregation pattern resulting from the continuous casting process at the very beginning of the component’s life-cycle.

1.3

Historical Development of ICME

As computers and computation represent the key ingredient of ICME, the development of this discipline follows the development of computers and their use in society (Figure 1.3). Increasing computational capabilities increasingly allowed for mimicking of real processes in a virtual world. For this purpose models had to be developed, allowing describing physical processes on a computer at all. The most prominent method is the description of phenomena occurring in the continuum of the real world on a numerical grid using the finite difference methods (FDMs) and FEMs and their further derivatives. In the meantime, these methods have



Figure 1.3 Development of computers and computational power goes along with significant changes in their applications. In the 1960s, computers filled entire rooms, still had limited capabilities, and essentially were operated by experts only. Computers of the twenty-first century find a place on a table

with their performance largely exceeding the one of a 1960s computer. Their “operators” changed into “users” and in general are normal people without special computational skills. Nowadays, research and development could not proceed as rapidly without computers.

reached a degree of maturity, making them even applicable to the qualification and certification of products.

FEMs, extended FEMs “X-FEMs,” computational fluid dynamics “CFD,” and computational damage mechanics “CDM” have been extremely successful and a number of relevant software packages are frequently used to describe and optimize individual processes in the frame of “CE.” Most progress in terms of “ICE” by now has been made in the area of structural materials and their mechanical properties. Computer simulations of macroscopic processes nowadays range from CAD-data to the finished product and in the past decade have been intensively used in many fields of application such as virtual crash tests.

Material data entering such simulations, however, by now in many cases have to be taken from experiments, from literature, or from other sources of information. Owing to a lack of more detailed information or high costs for their determination, such data are frequently assumed as constant, isotropic, homogeneous, and/or are based on other simplifications. Values for a dedicated material often are not available and are then approximated by drawing on similar materials. The variation in these values across the component, their dependence on temperature, and anisotropy are by now, in general, even entirely neglected.

The necessity for such approximations is due to the fact that computational models for materials, allowing for the prediction of materials properties, did not keep pace with the rapid developments of the macroscopic FEM models.

The historic development of CM aiming at the prediction of material properties has at least two different roots, one originating from the atomistic scale in a bottom-up approach and one starting from a thermodynamic, statistical perspective. The latter has proved the potential to tackle technical alloy systems. On the basis of the description of the Gibbs energy of the individual phases and the development of respective models, the CALPHAD method was established in the 1970s to assess a variety of data and combine them into suitable databases [1, 7]. Software and databases such as Thermo-Calc [8], JMatPro [9], FactSage [10], or Pandat [11] have meanwhile become key tools for modern alloy development.

The thermodynamic nature of these programs and databases, however, in general only allows the prediction of equilibrium conditions such as the fractions of individual phases being in equilibrium at a given temperature, the onset temperatures for the formation of specific phases, and many other most interesting thermodynamic data. Information can, however, be neither drawn on the evolution of these phase fractions in time (being mandatory to describe the kinetics of phase evolution) nor about their distribution in space (essentially corresponding to the microstructure, which eventually defines the properties of the material).

In the late 1990s, theoretical developments in the area of microstructure modeling such as the phase-field theory [12] and multiphase-field models [13, 14] have been combined with the above thermodynamic models [15–17]. Such combined models nowadays provide the key to describe and to control the microstructure evolution and eventually to tailor effective properties of technical materials and products [18]. The required data and parameter sets for such models can be obtained from even