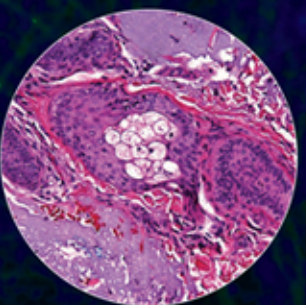
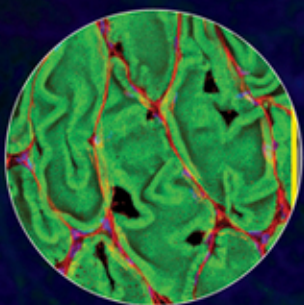
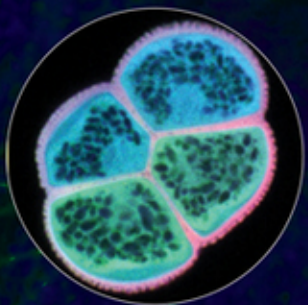


Fundamentals of Light Microscopy and Electronic Imaging



DOUGLAS B. MURPHY
MICHAEL W. DAVIDSON

 WILEY-BLACKWELL

FUNDAMENTALS OF LIGHT MICROSCOPY AND ELECTRONIC IMAGING

FUNDAMENTALS OF LIGHT MICROSCOPY AND ELECTRONIC IMAGING

Second Edition

**Douglas B. Murphy
Michael W. Davidson**

 **WILEY-BLACKWELL**

A JOHN WILEY & SONS, INC., PUBLICATION

Cover Image: Courtesy of Michael W. Davidson

Copyright © 2013 by Wiley-Blackwell. All rights reserved

Published by John Wiley & Sons, Inc., Hoboken, New Jersey
Published simultaneously in Canada

No part of this publication may be reproduced, stored in a retrieval system, or transmitted in any form or by any means, electronic, mechanical, photocopying, recording, scanning, or otherwise, except as permitted under Section 107 or 108 of the 1976 United States Copyright Act, without either the prior written permission of the Publisher, or authorization through payment of the appropriate per-copy fee to the Copyright Clearance Center, Inc., 222 Rosewood Drive, Danvers, MA 01923, (978) 750-8400, fax (978) 750-4470, or on the web at www.copyright.com. Requests to the Publisher for permission should be addressed to the Permissions Department, John Wiley & Sons, Inc., 111 River Street, Hoboken, NJ 07030, (201) 748-6011, fax (201) 748-6008, or online at <http://www.wiley.com/go/permissions>.

Limit of Liability/Disclaimer of Warranty: While the publisher and author have used their best efforts in preparing this book, they make no representations or warranties with respect to the accuracy or completeness of the contents of this book and specifically disclaim any implied warranties of merchantability or fitness for a particular purpose. No warranty may be created or extended by sales representatives or written sales materials. The advice and strategies contained herein may not be suitable for your situation. You should consult with a professional where appropriate. Neither the publisher nor author shall be liable for any loss of profit or any other commercial damages, including but not limited to special, incidental, consequential, or other damages.

For general information on our other products and services or for technical support, please contact our Customer Care Department within the United States at (800) 762-2974, outside the United States at (317) 572-3993 or fax (317) 572-4002.

Wiley also publishes its books in a variety of electronic formats. Some content that appears in print may not be available in electronic formats. For more information about Wiley products, visit our web site at www.wiley.com.

Library of Congress Cataloging-in-Publication Data:

Murphy, Douglas B.

Fundamentals of light microscopy and electronic imaging / Douglas B. Murphy, Michael W. Davidson. – 2nd ed.

p. ; cm.

Includes bibliographical references and index.

ISBN 978-0-471-69214-0 (cloth)

1. Microscopy. I. Davidson, Michael W. (Michael Wesley), 1950- II. Title.

[DNLN: 1. Microscopy. 2. Image Processing, Computer-Assisted. QH 211]

QH205.2.M87 2013

502.8'2-dc23

2012009798

Printed in Singapore

10 9 8 7 6 5 4 3 2 1

CONTENTS

Preface	xi
Acknowledgments	xii
1. FUNDAMENTALS OF LIGHT MICROSCOPY	1
Overview	1
Optical Components of the Light Microscope	1
Aperture and Image Planes in a Focused, Adjusted Microscope	5
<i>Note: Objectives, Eyepieces, and Eyepiece Telescopes</i>	6
Koehler Illumination	9
Adjusting the Microscope for Koehler Illumination	9
<i>Note: Summary of Steps for Koehler Illumination</i>	11
<i>Note: Focusing Oil Immersion Objectives</i>	14
Fixed Tube Length versus Infinity Optical Systems	15
Precautions for Handling Optical Equipment	16
Care and Maintenance of the Microscope	17
<i>Exercise: Calibration of Magnification</i>	17
2. LIGHT AND COLOR	21
Overview	21
Light as a Probe of Matter	21
The Dual Particle- and Wave-Like Nature of Light	25
The Quality of Light	26
Properties of Light Perceived by the Eye	27
Physical Basis for Visual Perception and Color	28
Addition and Subtraction Colors	30
<i>Exercise: Complementary Colors</i>	32

3. ILLUMINATORS, FILTERS, AND THE ISOLATION OF SPECIFIC WAVELENGTHS	35
Overview	35
Illuminators and Their Spectra	35
Illuminator Alignment and Bulb Replacement	41
<i>Demonstration: Spectra of Common Light Sources</i>	41
<i>Demonstration: Aligning a 100-W Mercury Arc Lamp in an Epi-Illuminator</i>	43
Filters for Adjusting the Intensity and Wavelength of Illumination	45
Effects of Light on Living Cells	50
4. LENSES AND GEOMETRICAL OPTICS	53
Overview	53
Reflection and Refraction of Light	53
Image Formation by a Simple Lens	56
<i>Note: Real and Virtual Images</i>	57
Rules of Ray Tracing for a Simple Lens	58
Object–Image Math	58
The Principal Aberrations of Lenses	62
Designs and Specifications of Objectives	65
Condensers	71
Oculars	72
Microscope Slides and Coverslips	73
The Care and Cleaning of Optics	73
<i>Exercise: Constructing and Testing an Optical Bench Microscope</i>	76
5. DIFFRACTION AND INTERFERENCE IN IMAGE FORMATION	79
Overview	79
Diffraction and Interference	80
The Diffraction Image of a Point Source of Light	83
The Constancy of Optical Path Length between Object and Image	85
<i>Demonstration: Viewing the Airy Disk with a Pinhole Aperture</i>	85
Effect of Aperture Angle on Diffraction Spot Size	87
Diffraction by a Grating and Calculation of Its Line Spacing, D	89
<i>Demonstration: The Diffraction Grating</i>	93
Abbé’s Theory for Image Formation in the Microscope	94
A Diffraction Pattern Is Formed in the Rear Aperture of the Objective	97
<i>Demonstration: Observing the Diffraction Image in the Rear Focal Plane of a Lens</i>	98
Preservation of Coherence: Essential Requirement for Image Formation	99
<i>Exercise: Diffraction by Microscope Specimens</i>	101
6. DIFFRACTION AND SPATIAL RESOLUTION	103
Overview	103
Numerical Aperture	103

Spatial Resolution	105
Depth of Field and Depth of Focus	109
Optimizing the Microscope Image: A Compromise between Spatial Resolution and Contrast	109
<i>Exercise: Resolution of Striae in Diatoms</i>	112

7. PHASE CONTRAST MICROSCOPY AND DARKFIELD MICROSCOPY **115**

Overview	115
Phase Contrast Microscopy	115
The Behavior of Waves from Phase Objects in Brightfield Microscopy	119
<i>Exercise: Determination of the Intracellular Concentration of Hemoglobin in Erythrocytes by Phase Immersion Refractometry</i>	128
Darkfield Microscopy	129
<i>Exercise: Darkfield Microscopy</i>	133

8. PROPERTIES OF POLARIZED LIGHT **135**

Overview	135
The Generation of Polarized Light	135
<i>Demonstration: Producing Polarized Light with a Polaroid Filter</i>	137
Polarization by Reflection and Scattering	139
Vectorial Analysis of Polarized Light Using a Dichroic Filter	139
Double Refraction in Crystals	142
<i>Demonstration: Double Refraction by a Calcite Crystal</i>	144
Kinds of Birefringence	145
Propagation of O and E Wavefronts in a Birefringent Crystal	146
Birefringence in Biological Specimens	148
Generation of Elliptically Polarized Light by Birefringent Specimens	149

9. POLARIZATION MICROSCOPY **153**

Overview	153
Optics of the Polarizing Microscope	155
Adjusting the Polarizing Microscope	156
Appearance of Birefringent Objects in Polarized Light	157
Principles of Action of Retardation Plates and Three Popular Compensators	158
<i>Demonstration: Making a λ-Plate from a Piece of Cellophane</i>	162
<i>Exercise: Determination of Molecular Organization in Biological Structures Using a Full Wave Plate Compensator</i>	167

10. DIFFERENTIAL INTERFERENCE CONTRAST MICROSCOPY AND MODULATION CONTRAST MICROSCOPY **173**

Overview	173
The DIC Optical System	173
<i>Demonstration: The Action of a Wollaston Prism in Polarized Light</i>	179

Modulation Contrast Microscopy	190
<i>Exercise: DIC Microscopy</i>	194

11. FLUORESCENCE MICROSCOPY **199**

Overview	199
Applications of Fluorescence Microscopy	201
Physical Basis of Fluorescence	202
Properties of Fluorescent Dyes	205
<i>Demonstration: Fluorescence of Chlorophyll and Fluorescein</i>	206
Autofluorescence of Endogenous Molecules	211
<i>Demonstration: Fluorescence of Biological Materials under UV Light</i>	213
Fluorescent Dyes and Proteins in Fluorescence Microscopy	213
Arrangement of Filters and the Epi-Illuminator in the Fluorescence Microscope	218
Objectives and Spatial Resolution in Fluorescence Microscopy	224
Causes of High Fluorescence Background	225
The Problem of Bleedthrough with Multiply Stained Specimens	227
Quenching, Blinking, and Photobleaching	228
Examining Fluorescent Molecules in Living Cells	230

12. FLUORESCENCE IMAGING OF DYNAMIC MOLECULAR PROCESSES **233**

Overview	233
Modes of Dynamic Fluorescence Imaging	234
Förster Resonance Energy Transfer	236
Applications	244
Fluorescence Recovery after Photobleaching	245
TIRF Microscopy: Excitation by an Evanescent Wave	252
Advanced and Emerging Dynamic Fluorescence Techniques	261

13. CONFOCAL LASER SCANNING MICROSCOPY **265**

Overview	265
The Optical Principle of Confocal Imaging	267
<i>Demonstration: Isolation of Focal Plane Signals with a Confocal Pinhole</i>	271
Advantages of CLSM over Widefield Fluorescence Systems	273
Criteria Defining Image Quality and the Performance of an Electronic Imaging System	275
Confocal Adjustments and Their Effects on Imaging	277
Photobleaching	286
General Procedure for Acquiring a Confocal Image	286
Performance Check of a Confocal System	288
Fast (Real-Time) Imaging in Confocal Microscopy	288
Spectral Analysis: A Valuable Enhancement for Confocal Imaging	295

Optical Sectioning by Structured Illumination	297
Deconvolution Microscopy	298
<i>Exercise: Effect of Confocal Variables on Image Quality</i>	304
14. TWO-PHOTON EXCITATION FLUORESCENCE MICROSCOPY	307
Overview	307
The Problem of Photon Scattering in Deep Tissue Imaging	308
Two-Photon Excitation Is a Nonlinear Process	309
Localization of Excitation	314
Why Two-Photon Imaging Works	317
Resolution	318
Equipment	319
Three-Photon Excitation	325
Second Harmonic Generation Microscopy	326
15. SUPERRESOLUTION IMAGING	331
Overview	331
The RESOLFT Concept	333
Single-Molecule Localization Microscopy	334
Structured Illumination Microscopy	343
Stimulated Emission Depletion (STED) Microscopy: Superresolution by PSF Engineering	349
16. IMAGING LIVING CELLS WITH THE MICROSCOPE	357
Overview	357
Labeling Strategies for Live-Cell Imaging	358
Control of Illumination	361
Control of Environmental Conditions	365
Optics, Detectors, and Hardware	372
Evaluating Live-Cell Imaging Results	384
<i>Exercise: Fluorescence Microscopy of Living Tissue Culture Cells</i>	384
17. FUNDAMENTALS OF DIGITAL IMAGING	389
Overview	389
The Charge-Coupled Device (CCD Imager)	390
CCD Designs	396
<i>Note: Interline CCD Imagers: The Design of Choice for Biomedical Imaging</i>	398
Back-Thinned Sensors	398
EMCCD Cameras: High Performance Design for Greatest Sensitivity	399
Scientific CMOS: The Next Generation of Scientific Imagers	400
Camera Variables Affecting CCD Readout and Image Quality	401
Six Terms Define Imaging Performance	404
Aliasing	409

Color Cameras	410
<i>Exercise: Evaluating the Performance of a CCD Camera</i>	411
18. DIGITAL IMAGE PROCESSING	415
Overview	415
Preliminaries: Image Display and Data Types	416
Histogram Adjustment	417
Adjusting Gamma (γ) to Create Exponential LUTs	421
Flat-Field Correction	421
Image Processing With Filters	425
Signal-to-Noise Ratio	432
The Use of Color	438
Images as Research Data and Requirements for Scientific Publication	442
<i>Exercise: Flat-Field Correction and Determination of S/N Ratio</i>	448
Appendix A: Answer Key to Exercises	451
Appendix B: Materials for Demonstrations and Exercises	455
Appendix C: Sources of Materials for Demonstrations and Exercises	463
Glossary	465
Microscopy Web Resources	509
Recommended Reading	521
References	523
Index	531

PREFACE

In the 10 years since this book first appeared, much has happened to catapult light microscopy into the forefront of biomedical research methodologies. The advances include: fundamentally new optical methods and imaging technologies for “superresolution” imaging; an explosion of new fluorescent dyes and fluorescent protein probes; new designs for objectives and thin-film interference filters; new designs of illuminators, including LED illuminators used in fluorescence imaging; new generations of silicon-based detectors, such as EMCCD cameras and scientific CMOS cameras, and many other developments. We have modified many of the chapters to include these topics, and we have added new chapters to cover essential new areas in fluorescence microscopy: fluorescence dynamics with FRET, FRAP, and TIRF; two-photon microscopy and second harmonic generation imaging; superresolution imaging including methods for single-molecule localization imaging, structured illumination imaging, and stimulated emission depletion microscopy; and a new chapter on live-cell imaging methods. But we removed a chapter on video microscopy, in keeping with the technology of the new digital age. We have also kept: demonstrations and laboratory exercises to help master new principles; a glossary of terms, appendices that supplement the exercises; and a new Webliography of basic resources on the internet.

We hope the new will help promote interest in microscopy and provide investigators with the information necessary to get the best performance from their imaging equipment.

Douglas B. Murphy
Manager of Light Microscope Imaging,
HHMI Janelia Farm Research Campus, Ashburn, VA
Adjunct Professor of Cell Biology
Johns Hopkins Medical School, Baltimore, MD

Michael W. Davidson
Optical Microscopy Facility,
National High Magnetic Field Laboratory
Florida State University, Tallahassee, FL

ACKNOWLEDGMENTS

We wish to thank our many friends and colleagues who made this work possible, foremost our spouses, Christine Murphy and Pamela Davidson, for their great patience and encouragement throughout the project. Without their cooperation and understanding, the book could not have been written. We thank Christine Murphy, Tadj Dragoo, and Erin Wilson for help with the writing and for proofreading the text.

Special thanks are due to many individuals who made this work possible.

I (DBM) would like to thank the many students who have taken my microscope courses over the years at Johns Hopkins and Janelia Farm, who inspired me to write the book and gave valuable advice. In particular, I would like to thank my colleagues at Johns Hopkins and others who helped me with the first edition: Drs. Bill Earnshaw (University of Edinburgh), Gordon Ellis (University of Pennsylvania), Joe Gall (Carnegie Institution, Department of Embryology), Shinya Inoue (Marine Biological Laboratory), Ernst Keller (Carl Zeiss, Inc.), John Russ (North Carolina State University), Kip Sluder (University of Massachusetts Medical School), and Ken Spring (National Institutes of Health). For help with the second edition, I am deeply indebted to Eric Betzig, Mats Gustafsson, Harald Hess, Na Jie, and Karel Svoboda at Janelia Farm, as well as many Janelia Farm fellows and colleagues, including: Alma Arnold, Tim Brown, Reto Fiolka, Margaret Jefferies, Gleb Shtengel, Johannes Seelig, and Lin Shao. Rebecca Williams (Cornell University) and Jerome Mertz (Boston University) also helped in important ways. I especially want to give special thanks to Reed George and Gerry Rubin at Janelia Farm whose cooperation made it possible for me to work on this project, and Peter Devreotes at Johns Hopkins Medical School for encouragement and support.

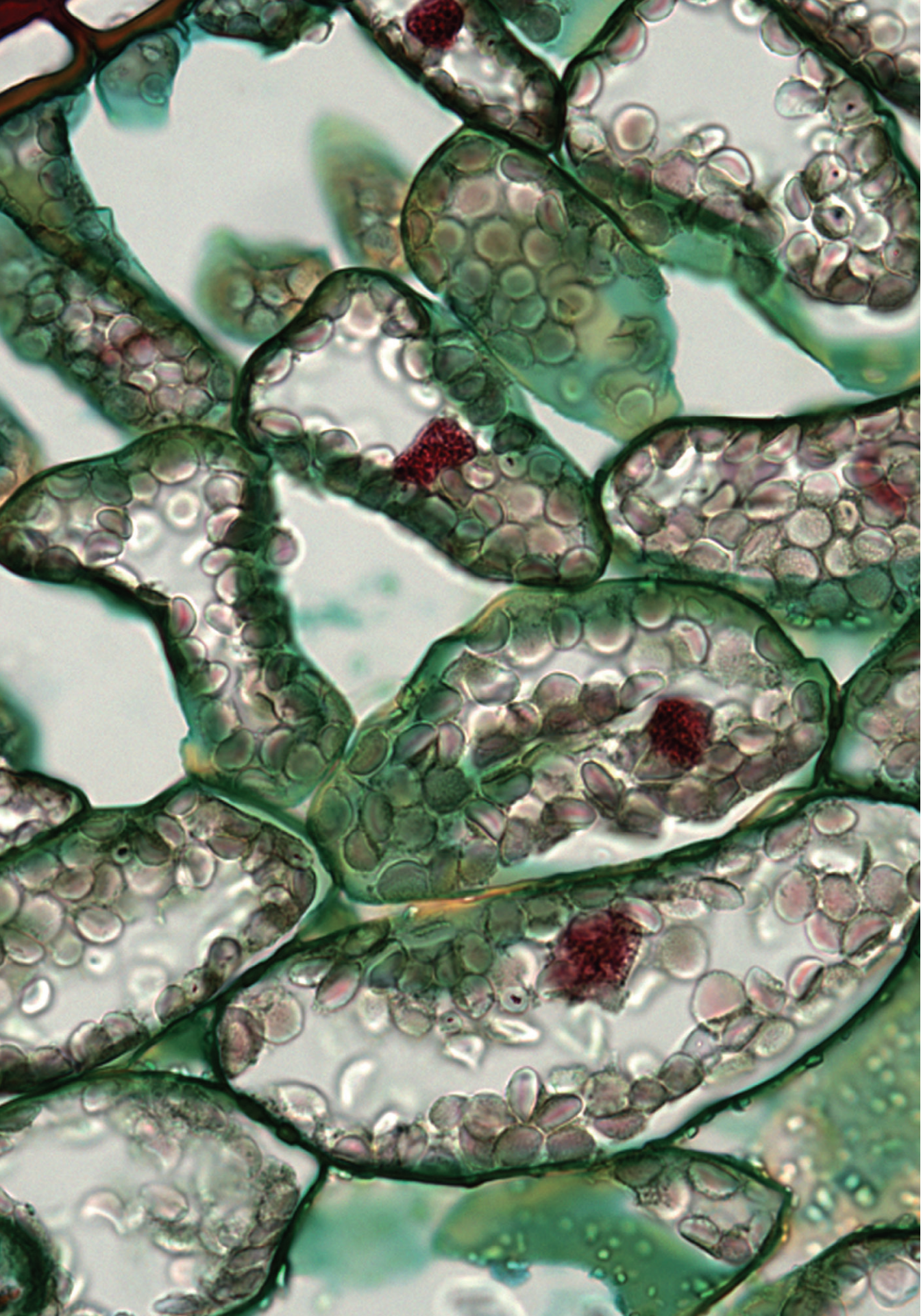
I (MWD) would like to thank (in addition to most of the folks listed above) the many graphics artists, laboratory technicians, graduate students, and programmers who have worked so diligently on the Molecular Expressions, Nikon MicroscopyU, Zeiss Campus, and Olympus Resource Center websites over the past decade and assisted in the creation of figures and images in the second edition. These include: Adam Rainey, Tony Gines, Chris Burdette, Aaron Baillie, Nathan Kennedy, Kevin John, Rich Ludlow, John Childs, Chris Steenerson, Lane Henderson, Pablo Montoya, Steve Price, David Howard, John Bouma, Sean Fink, Shane Hewett, Stephanie Corn, Matt Parry-Hill, John Long, Matt De Marco, Lionel Parsons, Nate Bibler, Bo Flynn, Nathan Claxton, Korey

Wilson, Ericka Ramko, Michelle Baird, Paula Cranfill, John Allen, Sarah Gilbert, Patrick Roche, John Griffin, Tom Fellers, Shannon Neaves, Riley Evans, Brittany Sell, and David Homan. I would also like to thank my colleagues at Florida State University and the National High Magnetic Field Laboratory who have provided help in all phases of the development of our Optical Microscopy facility: Jack Crow, Brian Fairhurst, Greg Boebinger, Clyde Rea, Alan Marshall, Dave Gilbert, Ross Ellington, Tim Cross, Lei Zhu, Tom Roberts, Kim Riddle, Steve Lenhert, Randy Rill, Dave van Winkle, Kirby Kemper, Bob Johnson, Ray Bye, Betty Southard, and John Fraser. Colleagues from other universities have also contributed by teaching us new tricks in microscopy and fluorescent probe development: Robert Campbell (University of Alberta), Dave Piston (Vanderbilt University), Jason Swedlow (University of Dundee), Jennifer Lippincott-Schwartz (NIH), George Patterson (NIH), Clare Waterman (NIH), Kurt Thorn (University of California, San Francisco), Rich Day (Indiana University), Dmitriy Chudakov (Russian Academy of Science), Vlad Verkhusha (Albert Einstein), and Tom Deerinck (University of California, San Diego).

We give special acknowledgment and thanks to our colleagues at Carl Zeiss, Leica Microsystems, Nikon USA, Olympus America, Molecular Probes (Life Technologies), Hamamatsu Photonics, and other companies for many years of support and for helpful information and details for many of the figures. We give special thanks and acknowledgment to: (Nikon) Stan Schwartz, Steve Ross, Nathan Claxton, Gary Laevsky, Joel Silfies, Eric Flem, Ed Lieser, Lee Shuett, Don Armstrong, Ric Villani, John Zentmeyer, Richard Gruskin, Allison Forlenza, Joe LoBiondo, Deborah Robbins, Tracey Webb, Jeff Larson, and Mike Davis. (Olympus) George Steares, Bill Fester (now at 3I), Nick George (now at Semrock), Ian Kirk, Ed Lachica (now at Lumen Dynamics), Monica Kirk (now at 3I), Kim Wicklund, Tim Randall, Chris Higgins, Stuart Shand, Kenji Matsuba, Richard Baucom, Brad Burklow, Laura Ferguson, Brendan Brinkman, Sam Tesfai, Thomas Geer, and Paul Jantzen. (Zeiss) Alex Söll, Jochen Tham, Maya Everett, Rudi Rottenfusser, Scott Olenych, Matthias Langhorst, Kenny Patterson, Elise Shumsky, Brian Crooks, and Klaus Weisschart. (Leica) Sebastian Tille, Bernd Sägmüller, Sean Garvey, Doug Reed, Anthony Santerelli, and Geoff Daniels. (Hamamatsu) Butch Moomaw, Ken Kaufmann, and Mark Hobson. (Semrock) Turan Erdogan, Nick George, and Prashant Prabhat. (Photometrics) Chris Murphy, Hilary Hicks, and David Barnes. (Chroma) Mike Stanley and Chris Bauman. (Omega) Dan Osborn. (Molecular Probes) Mike Ignatius, Mike O'Grady, Nick Dolman, Cathy Erickson, Jason Kilgore, Magnus Persmark, and Iain Johnson. (Hunt Optics and Imaging) Andrew Hunt and John Marchlenski. (BioVision) Ken Anderson, Fernando Delaville (now at Leica).

Finally, we thank our editors at John Wiley & Sons for their great patience in receiving the manuscript and managing the production of the book.

D.B.M.
M.W.D.



FUNDAMENTALS OF LIGHT MICROSCOPY

OVERVIEW

In this chapter, we examine the optical design of the light microscope and review procedures for adjusting the microscope and its illumination to obtain the best optical performance. The light microscope contains two distinct sets of interlaced focal planes, eight planes in all, between the illuminator and the eye. All of these planes play an important role in image formation. As we will see, some planes are not fixed, but vary in their location depending on the focus position of the objective and condenser lenses. Therefore, an important first step is to adjust the microscope and its illuminator for Koehler illumination, a method of illumination introduced by August Koehler in 1893 that gives bright, uniform illumination of the specimen and simultaneously positions the sets of image and diffraction planes at their proper locations. We will refer to these locations frequently throughout the book. Indeed, microscope manufacturers build microscopes so that filters, prisms, and diaphragms are located at precise physical locations in the microscope body, assuming that certain focal planes will be precisely located after the user has adjusted the microscope for Koehler illumination. Finally, we will practice adjusting the microscope for examining a stained histological specimen, review the procedure for determining magnification, and measure the diameters of cells and nuclei in a tissue sample.

OPTICAL COMPONENTS OF THE LIGHT MICROSCOPE

A *compound light microscope* is an optical instrument that uses visible light to produce a magnified image of an object (or specimen) that is projected onto the retina of the



Brightfield microscopy of stained mesophyll cells in a leaf section.

Fundamentals of Light Microscopy and Electronic Imaging, Second Edition.

Douglas B. Murphy and Michael W. Davidson.

© 2013 Wiley-Blackwell. Published 2013 by John Wiley & Sons, Inc.

eye or onto the photosensitive surface of an imaging device. The word *compound* refers to the fact that two lenses, the objective and the eyepiece (or ocular), work together to produce the final magnification M of the image such that:

$$M_{\text{final}} = M_{\text{obj}} \times M_{\text{oc.}}$$

Two microscope components are of critical importance in forming the image: (1) the *objective*, which collects light diffracted by the specimen and forms a magnified real image at what is called the real intermediate image plane near the eyepieces or oculars, and (2) the *condenser*, which focuses light from the illuminator onto a small area of the specimen. (We define real vs. virtual images and examine the geometrical optics of lenses and magnification in Chapter 4; a real image can be viewed on a screen or exposed on a sheet of film, whereas a virtual image cannot.) The arrangement of these and other components in an upright stand research level microscope is shown in Figure 1.1, and for an inverted research microscope in Figure 1.2. Two lamps provide illumination for brightfield and interference (illumination from below: *diascopic*) and fluorescence (illumination from above: *episcopic*) modes of examination. Both the objective and condenser contain multiple lens elements that perform close to their theoretical limits and are therefore expensive. As these optics are handled frequently, they require careful attention. Other components less critical to image formation are no less deserving of care, including the tube lens and eyepieces, the lamp collector and lamp socket and its cord, filters, polarizers, retarders, and the microscope stage and stand with coarse and fine focus.

At this point, take time to examine Figure 1.3, which shows how an image becomes magnified and is perceived by the eye. The figure also points out the locations of important focal planes in relation to the objective, the ocular, and the eye. The specimen on the microscope stage is examined by the objective, which produces a magnified real image of the object in the image plane of the ocular. When looking in the microscope, the ocular acting together with the eye's cornea and lens projects a still more magnified real image onto the retina, where it is perceived and interpreted by the brain as a magnified virtual image about 25 cm (10 in) in front of the eye. For photography, the intermediate image is recorded directly or projected as a real image onto a camera.

Microscopes come in both inverted and upright designs (Figs. 1.1 and 1.2). In both designs the location of the real intermediate image plane at the eyepiece is fixed, and the focus dial of the microscope is used to position the image at precisely this location. In most conventional upright microscopes, the objectives are attached to a nosepiece turret on the microscope body, and the focus control moves the specimen stage up and down to bring the image to its proper location in the eyepiece. In inverted designs, the stage itself is fixed, being bolted to the microscope body, and the focus dials move the objective turret up and down to position the image in the eyepieces. Inverted microscopes are rapidly gaining in popularity because one can examine living cells in culture dishes filled with medium using standard objectives and avoid the use of sealed flow chambers, which can be awkward. One also has better access to the stage, which can serve as a rigid working platform for microinjection and physiological recording equipment. Inverted designs also have their center of mass closer to the lab bench and are therefore less sensitive to vibration. However, there is some risk of physical damage, as objectives may rub against the bottom surface of the stage during rotation of the objective turret. Oil immersion objectives are also at risk, because gravity can cause oil to drain down and enter the crevice between the nose and barrel, potentially

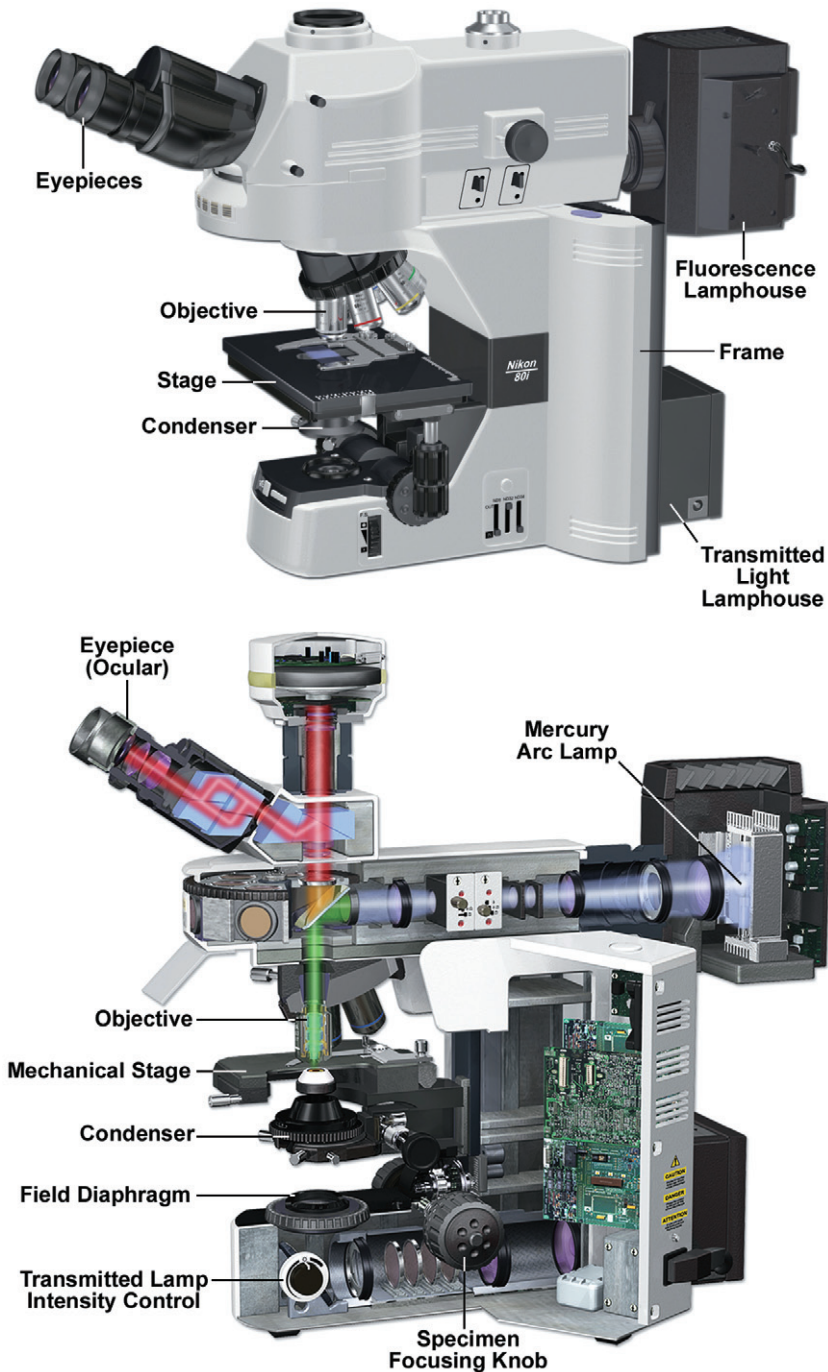


Figure 1.1

The research light microscope with upright stand. Two lamps provide transmitted and reflected light illumination. Note the locations of the knobs for the specimen and condenser lens focus adjustments. Also note the positions of two variable iris diaphragms: the field diaphragm near the illuminator, and the condenser diaphragm at the front aperture of the condenser. Each has an optimum setting in a properly adjusted microscope. Above: Nikon Eclipse 80i upright microscope; below: Olympus BX71 upright microscope.

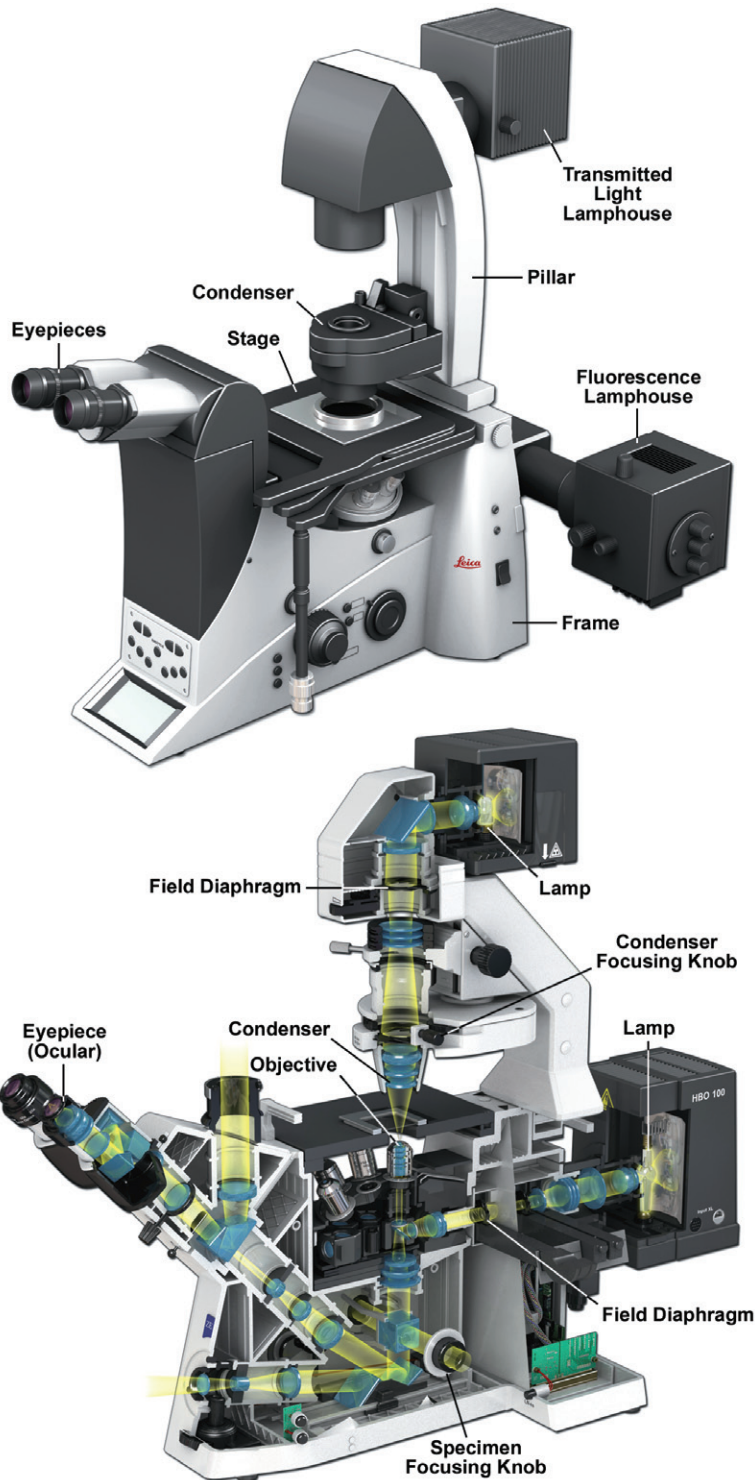


Figure 1.2

The research light microscope with inverted stand. As in upright designs, two lamps provide transmitted and reflected light illumination. Note the locations of the knobs for the specimen and condenser lens focus adjustments, which are often in different locations on inverted microscopes. Also note the positions of two variable iris diaphragms: the field diaphragm near the illuminator, and the condenser diaphragm at the front aperture of the condenser. Each has an optimum setting in a properly adjusted microscope. Above: Leica Microsystems DMI6000 B inverted microscope; below: Zeiss Axio Observer inverted microscope.

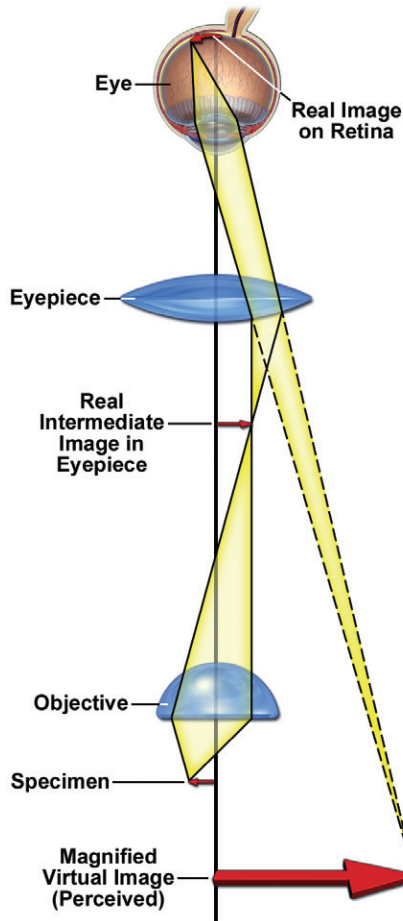


Figure 1.3

Perception of a magnified virtual image of a specimen in the microscope. The objective forms a magnified image of the object (called the real intermediate image) in the eyepiece; the intermediate image is examined by the eyepiece and eye, which together form a real image on the retina. Because of the perspective, the retina and brain interpret the scene as a magnified virtual image about 25 cm in front of the eye.

contaminating internal lens surfaces, ruining the optical performance and resulting in costly lens repair. This can be prevented by wrapping a pipe cleaner or hair band around the upper part of the lens to catch excess drips of oil. Therefore, despite many advantages, inverted research microscopes require a little more attention than do standard upright designs.

APERTURE AND IMAGE PLANES IN A FOCUSED, ADJUSTED MICROSCOPE

Principles of geometrical optics show that a microscope has two sets of interlaced conjugate focal planes, a set of four *object or field planes*, and a set of 4 *aperture or*

diffraction planes, that have fixed, defined locations with respect to the object, optical elements, the light source, and the eye or camera. Each plane within a set is *conjugate* with the other planes, with the consequence that all of the planes of a given set can be seen simultaneously when looking in the microscope. The field planes are observed in normal viewing mode using the eyepieces. This mode of viewing is called the normal, or object, or orthoscopic mode, and the real image of an object is called an *orthoscopic* image. Viewing the aperture or diffraction planes requires using an eyepiece telescope or Bertrand lens, which is focused on the rear aperture of the objective (see Note). This mode of viewing is called the aperture, or diffraction, or conosopic mode, and the image of the diffraction plane viewed at this location is called the *conoscopic* image. In this text, we refer to the two viewing modes as the *normal* and *aperture viewing modes* and do not use the terms orthoscopic and conosopic, although these terms are common in other texts.

Note: Objectives, Eyepieces, and Eyepiece Telescopes

An *aperture* is a hole or opening in an opaque mask designed to eliminate stray light from entering the light path, and most field and aperture planes of a microscope contain them. A fixed circular aperture is found at or near the rear focal plane of the objective (Fig. 1.4). (The precise location of the rear focal plane is a function of the focal length of the lens; for objectives with short focal lengths, the focal plane may be located inside the lens barrel.) The aperture mask is plainly visible at the back surface of the objective. This aperture marks one of the key aperture planes of the microscope, and we refer to this site frequently in the text.

The *eyepiece telescope* (not shown), sometimes called a phase or centering telescope, is a special focusable eyepiece that is used in place of an ocular to view the *rear aperture of the objective* and other aperture planes that are conjugate to it. To use the telescope, remove an eyepiece, insert the eyepiece telescope, and focus it on the circular edge of the objective rear aperture. Some microscopes contain a built-in focusable telescope lens called a *Bertrand lens* that can be conveniently rotated into and out of the light path as required.

The identities of the sets of conjugate focal planes are listed in Table 1.1, and their locations in the microscope under conditions of Koehler illumination are shown in Figure 1.5. The terms *front aperture* and *rear aperture* refer to the openings at the front and rear focal planes of a lens from the perspective of a light ray traveling from the lamp to the retina. Knowledge of the location of these planes is essential for adjusting the microscope and for understanding the principles involved in image formation. Indeed, the entire design of a microscope is based around these planes and the user's need to have access to them.

The *exit pupil* of the eyepiece, one of the microscope's aperture planes, is the disk of light that appears to hang in space a few millimeters above the back lens of the eyepiece; it is simply the image of the illuminated rear aperture of the objective. Normally, we are unaware that we are viewing four conjugate field planes when looking

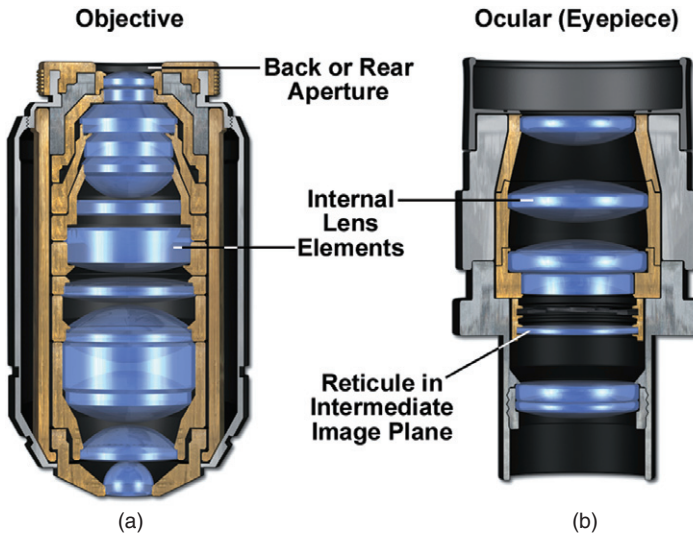


Figure 1.4

Objective and eyepiece diagrams. (a) Cross section of an objective showing the location of the back or rear aperture. (b) Cross sectional view of a focusable eyepiece, showing the location of the real intermediate image, in this case, containing an eyepiece reticule. Notice the many lens elements that make up these basic optics.

TABLE 1.1 Conjugate Planes in Optical Microscopy

Field Planes	Aperture Planes
(Normal view through the eyepieces)	(Aperture view through the eyepiece telescope)
Lamp (field) diaphragm	Lamp filament
Object (specimen) or field plane (diaphragm)	Front aperture of condenser
Real intermediate image plane (eyepiece field stop)	Rear aperture of objective
Retina or camera sensor face	Exit pupil of eyepiece (coincident with pupil of eye)

through the eyepieces of a microscope. As an example of the simultaneous visibility of conjugate focal planes, consider that the image of a piece of dirt on the focused specimen could lie in any one of the four field planes of the microscope: floaters near the retina, dirt on an eyepiece reticule, dirt on the specimen itself, and dirt on the glass plate covering the field diaphragm. With knowledge of the locations of the conjugate field planes, one can quickly determine the location of the dirt by rotating the eyepiece, moving the microscope slide, or wiping the cover plate of the field diaphragm. Before proceeding, you should take the time to identify the locations of the field and aperture planes on your microscope in the laboratory.

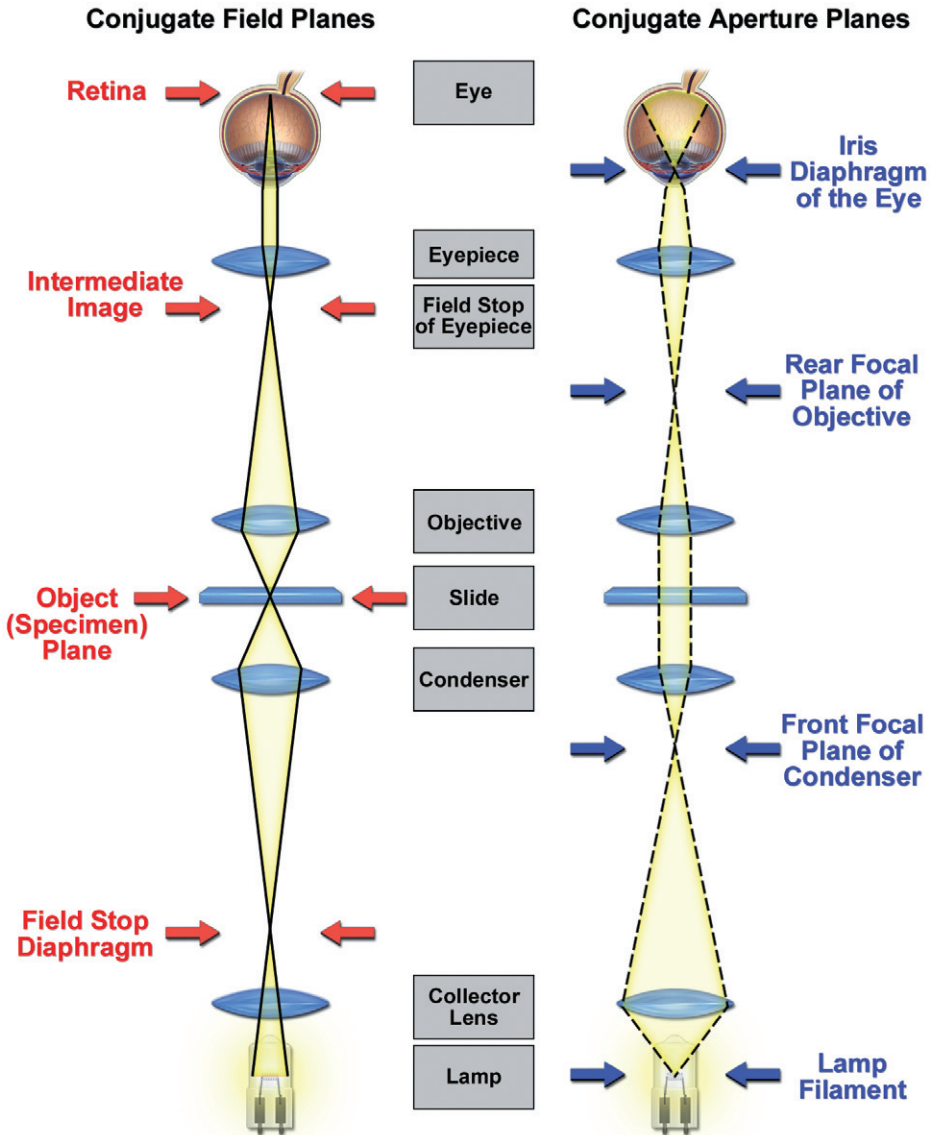


Figure 1.5

Conjugate and aperture planes in Koehler illumination. Arrows mark the conjugate focal planes. Note the locations of four conjugate field planes (red arrows; left) and four conjugate aperture planes (blue arrows; right) indicated by the crossover points of rays in the diagrams. The left-hand diagram shows that the specimen or object plane is conjugate with the real intermediate image plane in the eyepiece, the retina of the eye, and the field stop diaphragm between the lamp and the condenser. The right-hand drawing shows that the lamp filament is conjugate with aperture planes at the front focal plane of the condenser, the rear focal plane of the objective, and the pupil of the eye. The two sets of conjugate planes interdigitate with one another.

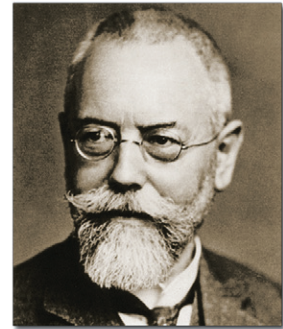
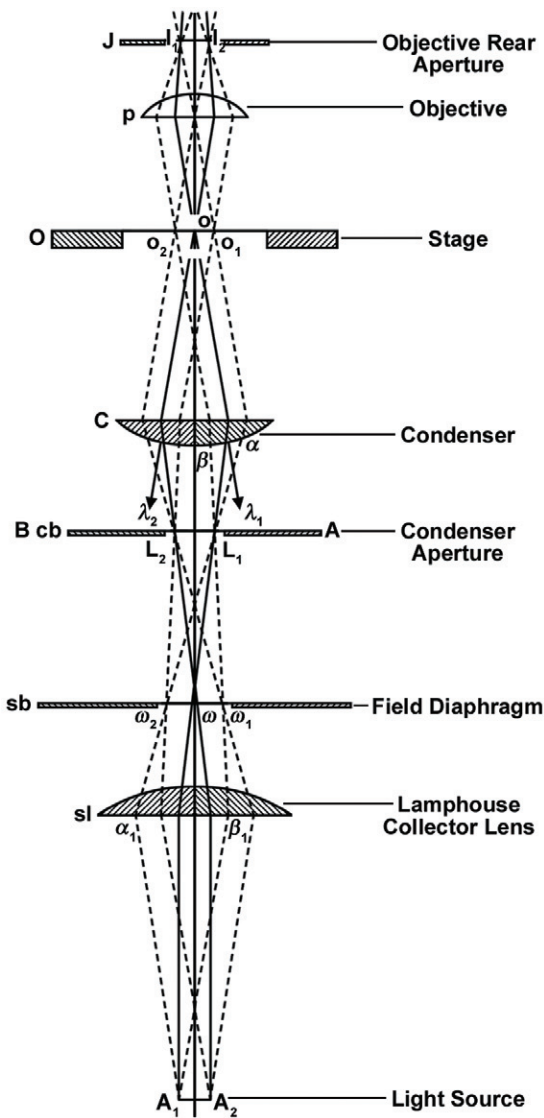
KOEHLER ILLUMINATION

Illumination is a critical determinant of optical performance in light microscopy. Apart from the intensity and wavelength range of the light source, it is important that a large cone of light emitted from each source point be collected by the lamp collector and that the source be imaged onto the front aperture of the condenser. From there, each point of the source image is projected through the specimen and to infinity as a parallel collimated pencil of light. The size of the illuminated field at the specimen is adjusted so that it matches the specimen field diameter of the objective being employed. Because each source point contributes equally to illumination in the specimen plane, variations in intensity in the image are attributed to the object and not to irregular illumination from the light source. The method of illumination introduced by August Koehler in the late nineteenth century fulfills these requirements and is the standard method of illumination used in light microscopy (Fig. 1.6). Under the conditions set forth by Koehler, a *collector lens* on the lamp housing is adjusted so that it focuses an image of the lamp filament at the front focal plane of the condenser while completely filling the aperture with light. Under this condition, illumination of the specimen plane is bright and even. Achieving this condition also requires focusing the condenser using the condenser focus knob, an adjustment that brings two sets of conjugate focal planes into precise physical locations in the microscope, a requirement for a wide range of image contrasting techniques that are discussed later in Chapters 7–11. The main advantages of Koehler illumination in image formation are:

- *Bright and even illumination in the specimen plane and in the conjugate image plane.* Even when illumination is provided by an irregular light source, such as a lamp filament, illumination of the object-specimen is remarkably uniform across an extended area. Under these conditions of illumination, a given point in the specimen is illuminated by every point in the light source, and conversely, a given point in the light source illuminates every point in the specimen.
- *Positioning of two different sets of conjugate focal planes at specific locations along the optical axis of the microscope,* a strict requirement for maximal spatial resolution and optimal image formation for a variety of optical modes. As we will see, stage focus and condenser focus and centration position the focal planes correctly, while correct settings of the field diaphragm and the condenser aperture diaphragm give control over resolution and contrast. Once properly adjusted, it is easier to locate and correct faults, such as dirt and bubbles that can degrade optical performance.

ADJUSTING THE MICROSCOPE FOR KOEHLER ILLUMINATION

Review Figure 1.5 again to familiarize yourself with the locations of the two sets of focal planes, one set of four field planes, and one set of four aperture planes. You will need an eyepiece telescope or Bertrand lens to examine the aperture planes and to make certain adjustments. In the absence of a telescope lens, one may simply remove an eyepiece and look straight down the optical axis at the objective aperture; however, without a telescope, the aperture diameter is small and difficult to see clearly. The adjustment procedure is given in detail below. You will need to check your alignment every time you change a lens to examine the specimen at a different magnification.



August Koehler
1866-1948

Figure 1.6

August Koehler introduced a new method of illumination that greatly improved image quality and revolutionized light microscope design. Koehler introduced the system in 1893 while he was a university student and instructor at the Zoological Institute in Giessen, Germany, where he performed photomicrography for taxonomic studies on limpets. Using the traditional methods of critical illumination, the glowing mantle of a gas lamp was focused directly on the specimen with the condenser, but the images were unevenly illuminated and dim, making them unsuitable for photography using slow-speed emulsions. Koehler's solution was to reinvent the illumination scheme. He introduced a collector lens for the lamp and used it to focus the image of the lamp on the front aperture of the condenser. A luminous field stop (the field diaphragm) was then focused on the specimen with the condenser focus control. The method provided bright, even illumination, and fixed the positions of the focal planes of the microscope optics. In later years, phase contrast microscopy, fluorescence microscopy with epi-illumination, differential interference contrast microscopy, and confocal optical systems would all utilize and be critically dependent on the action of the collector lens, the field diaphragm, and the presence of fixed conjugate focal planes that are inherent to Koehler's method of illumination. The interested reader should refer to the special centenary publication on Koehler by the Royal Microscopical Society (see Koehler, 1893).

Note: Summary of Steps for Koehler Illumination

1. Check that the lamp is focused on the front aperture of the condenser.
2. Focus the specimen.
3. Focus the condenser to see the field stop diaphragm.
4. Adjust the condenser diaphragm using the eyepiece telescope.

- *Preliminaries.* Place a specimen slide, such as a stained histological specimen, on the stage of the microscope. Adjust the condenser height with the condenser-focusing knob so that the front lens element of the condenser comes within ~1–2 mm of the specimen slide. Do the same for the objective. Be sure all diaphragms are open so that there is enough light (includes illuminator's field diaphragm, the condenser's front aperture diaphragm, and in some cases, a diaphragm in the objective itself). Adjust the lamp power supply so that the illumination is bright but comfortable when viewing the specimen through the eyepieces.
- *Check that the lamp fills the front aperture of the condenser.* Inspect the front aperture of the condenser by eye and ascertain that the illumination fills most of the aperture. It helps to hold a piece of lens tissue against the aperture to check the area of illumination (Fig. 1.7). Using an eyepiece telescope or Bertrand lens, examine the rear aperture of the objective and its conjugate planes, the front aperture of the condenser, and the lamp filament. Be sure the lamp filament is centered, using the adjustment screws on the lamp housing if necessary, and



Figure 1.7

Examining the area of illumination at the condenser front aperture.

confirm that the lamp filament is focused in the plane of the condenser diaphragm. This correction is made by adjusting the focus dial of the collector lens on the lamp housing. Once these adjustments are made, it is usually not necessary to repeat the inspection every time the microscope is used. Instructions for centering the lamp filament or arc are given in Chapter 3. Lamp alignment should be rechecked after the other steps have been completed.

- *Focus the specimen.* Bring a low power objective to within 1 mm of the specimen, and looking in the microscope, carefully focus the specimen using the microscope's coarse and fine focus dials. It is helpful to position the specimen with the stage controls so that a region of high contrast is centered on the optical axis before attempting to focus. It is also useful to use a low magnification "dry" objective (10–25 \times , used without immersion oil) first, since the *working distance*, the distance between the coverslip and the objective, is 2–5 mm for a low power lens. This reduces the risk of plunging the objective into the specimen slide and causing damage. Since the lenses on most microscopes are *parfocal* (see Chapter 4), higher magnification objectives will already be in focus or close to focus when rotated into position.
- *Focus and center the condenser.* With the specimen in focus, close down (stop down) the *field diaphragm* and then, while examining the specimen through the eyepieces, focus the angular outline of the diaphragm's periphery using the condenser's focusing knob (Fig. 1.8). If there is no light, turn up the power supply and bring the condenser closer to the microscope slide. If light is seen but seems to be far off axis, switch to a low power lens and move the condenser positioning knobs slowly to bring the center of the illumination into the center of the field of view. Focus the image of the field diaphragm and center it using the condenser's two centration adjustment screws (Fig. 1.9). The field diaphragm is then opened just enough to accommodate the object or the field of a given detector. This helps

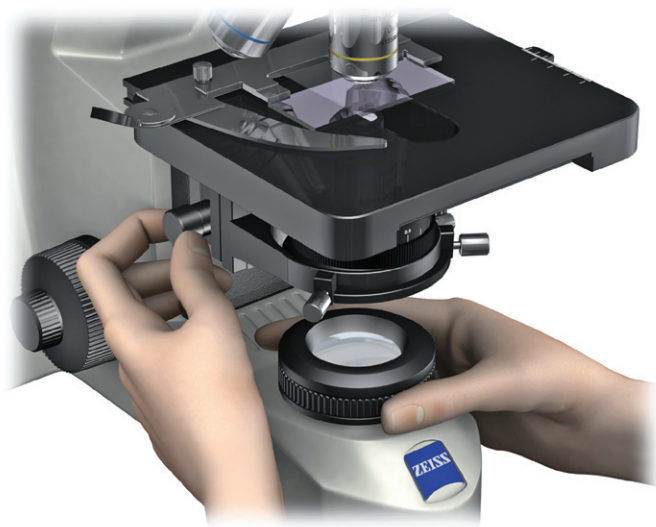


Figure 1.8

Adjusting the field diaphragm opening size and focusing the condenser.



Figure 1.9

Adjusting the condenser centering knobs during alignment of the microscope for Koehler illumination.

reduce scattered or stray light and improves image contrast. The condenser is now properly adjusted. We are nearly there! The conjugate focal planes that define Koehler illumination are now at their proper locations in the microscope.

- *Adjust the condenser diaphragm while viewing the objective rear aperture with an eyepiece telescope or Bertrand lens.* Finally, the condenser diaphragm is adjusted to obtain the best resolution and contrast, but is not closed so far as to degrade the resolution. In viewing the condenser front aperture using a telescope, the small bright disc of light seen in the telescope represents the objective's rear aperture plus the superimposed image of the condenser's front aperture diaphragm. As you close down the condenser diaphragm, you will see its edges enter the aperture opening and limit the objective aperture's diameter. Focus the telescope so the edges of the diaphragm are seen clearly. Stop when $\sim 3/4$ of the maximum diameter of the aperture remains illuminated and use this setting as a starting position for subsequent examination of the specimen (Fig. 1.10). As pointed out in Chapter 6, the setting of this aperture is crucial, because it determines the resolution of the microscope, affects the contrast of the image, and establishes the depth of field. It is usually impossible to optimize for resolution and contrast at the same time, so the $3/4$ open position indicated here is a good starting position. The final setting depends on the inherent contrast of the specimen.
- *Adjust the lamp brightness.* Image brightness is controlled by regulating the lamp voltage, or if the voltage is nonadjustable, by placing neutral density filters in the light path near the illuminator in specially designed filter holders. *The aperture diaphragms should never be closed down as a way to reduce light intensity, because this action reduces the resolving power and may blur fine details in the image. We will return to this point in Chapter 6.*

Condenser Diaphragm Adjustment

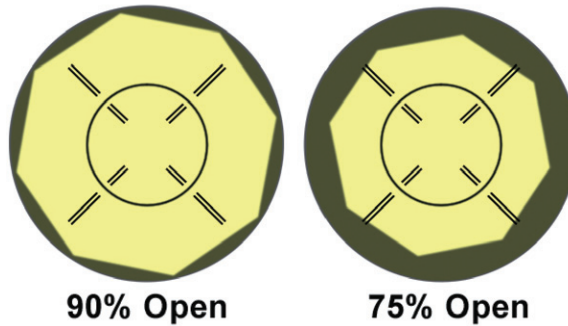


Figure 1.10

Adjusting the condenser diaphragm opening size to maximize contrast.

The procedure for adjusting the microscope for Koehler illumination seems invariably to stymie most newcomers. With so many planes and devices to think about, this is perhaps to be expected. To get you on your way, try to remember this simple two step guide: *Focus on a specimen and then focus and center the condenser*. Post this reminder near your microscope. If you do nothing else beyond this, you will have properly adjusted the image and aperture planes of the microscope, and the rest will come quickly enough after practicing the procedure a few times. Although the adjustments sound complex, they are simple to perform, and their significance for optical performance cannot be overstated. The advantages of Koehler illumination for a number of optical contrasting techniques will be revealed in the next several chapters.

Note: Focusing Oil Immersion Objectives

The *working distance*, the distance between the front lens element and the first surface of the coverslip of an oil immersion lens is so small ($\sim 60 \mu\text{m}$ for some oil immersion lenses) that the two optical surfaces nearly touch each other when the specimen is in focus. Since the focal plane at the specimen (the depth of field) is also very thin ($0.1 \mu\text{m}$ for a $100\times$, 1.4 NA objective), focusing on a thin, transparent specimen can be a real challenge. Due to such close tolerances, it is unavoidable that the lens and coverslip will occasionally make contact, but this is usually of little consequence. The outermost lens elements are mounted in a spring-loaded cap, so that the lens can be compressed a bit by the specimen slide without damaging the optics. The lens surface is also recessed and not coplanar with the surface of the metal lens cap, which prevents accidental scratching and abrasion.

Begin focusing by bringing the lens in contact with the drop of oil on the coverslip. The drop of oil will expand as the lens is brought towards focus, and at contact (essentially the desired focus position), the oil drop stops expanding. If overfocused, the microscope slide is pushed up off the stage by a small amount on an inverted microscope; on an upright microscope the spring-loaded element of the objective compresses a bit. Retract the lens to the true focal position and then examine the