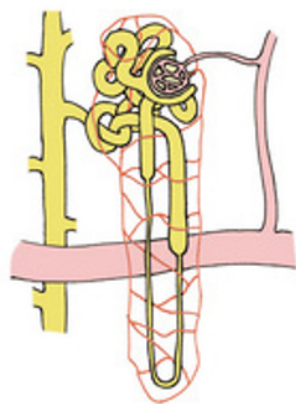
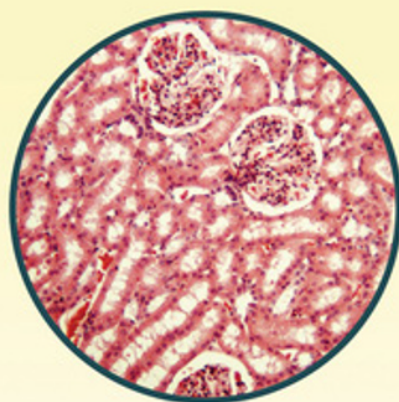


EIGHTH EDITION

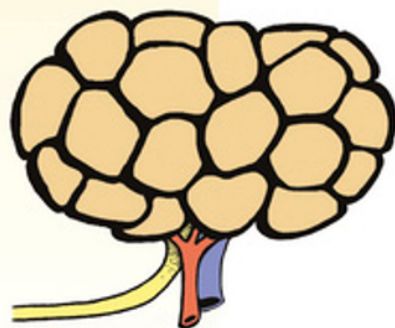
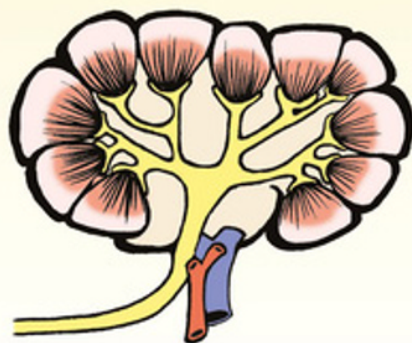
Anatomy and Physiology of



Farm Animals



Anna Dee Fails
Christianne Magee



WILEY Blackwell

ANATOMY AND PHYSIOLOGY OF
Farm Animals

ANATOMY AND PHYSIOLOGY OF
Farm Animals
EIGHTH EDITION

Anna Dee Fails, DVM, PhD

Assistant Professor, Department of Biomedical Sciences
College of Veterinary Medicine and Biomedical Sciences
Colorado State University
Fort Collins, Colorado, USA

Christianne Magee, DVM, PhD, Dip ACT

Assistant Professor, Department of Biomedical Sciences
Animal Reproduction and Biotechnology Laboratory
College of Veterinary Medicine and Biomedical Sciences
Colorado State University
Fort Collins, Colorado, USA

WILEY Blackwell

This edition first published 2018
© 2018 by John Wiley & Sons, Inc.

Edition History

Lippincott, Williams & Wilkins (1e, 1965; 2e, 1975; 3e, 1981; 4e, 1986; 5e, 1992; 6e, 2003); Wiley-Blackwell (7e, 2009)

All rights reserved. No part of this publication may be reproduced, stored in a retrieval system, or transmitted, in any form or by any means, electronic, mechanical, photocopying, recording or otherwise, except as permitted by law. Advice on how to obtain permission to reuse material from this title is available at <http://www.wiley.com/go/permissions>.

The right of Anna Dee Fails and Christianne Magee to be identified as the authors of this work has been asserted in accordance with law.

Registered Office

John Wiley & Sons, Inc., 111 River Street, Hoboken, NJ 07030, USA

Editorial Office

111 River Street, Hoboken, NJ 07030, USA

For details of our global editorial offices, customer services, and more information about Wiley products visit us at www.wiley.com.

Wiley also publishes its books in a variety of electronic formats and by print-on-demand. Some content that appears in standard print versions of this book may not be available in other formats.

Limit of Liability/Disclaimer of Warranty

The contents of this work are intended to further general scientific research, understanding, and discussion only and are not intended and should not be relied upon as recommending or promoting scientific method, diagnosis, or treatment by physicians for any particular patient. In view of ongoing research, equipment modifications, changes in governmental regulations, and the constant flow of information relating to the use of medicines, equipment, and devices, the reader is urged to review and evaluate the information provided in the package insert or instructions for each medicine, equipment, or device for, among other things, any changes in the instructions or indication of usage and for added warnings and precautions. While the publisher and authors have used their best efforts in preparing this work, they make no representations or warranties with respect to the accuracy or completeness of the contents of this work and specifically disclaim all warranties, including without limitation any implied warranties of merchantability or fitness for a particular purpose. No warranty may be created or extended by sales representatives, written sales materials or promotional statements for this work. The fact that an organization, website, or product is referred to in this work as a citation and/or potential source of further information does not mean that the publisher and authors endorse the information or services the organization, website, or product may provide or recommendations it may make. This work is sold with the understanding that the publisher is not engaged in rendering professional services. The advice and strategies contained herein may not be suitable for your situation. You should consult with a specialist where appropriate. Further, readers should be aware that websites listed in this work may have changed or disappeared between when this work was written and when it is read. Neither the publisher nor authors shall be liable for any loss of profit or any other commercial damages, including but not limited to special, incidental, consequential, or other damages.

Library of Congress Cataloging-in-Publication Data

Names: Fails, Anna Dee, author. | Magee, Christianne, 1980– author. | Preceded by (work):

Frandsen, R. D. Anatomy and physiology of farm animals.

Title: Anatomy and physiology of farm animals / Anna Dee Fails, Christianne Magee.

Description: Eighth edition. | Hoboken, NJ : John Wiley & Sons, Inc., 2018. |

Preceded by Anatomy and physiology of farm animals / Rowen D. Frandsen, W. Lee Wilke, Anna Dee Fails, 7th ed. 2009. | Includes bibliographical references and index. |

Identifiers: LCCN 2018007224 (print) | LCCN 2018009194 (ebook) | ISBN 9781119239734 (pdf) |

ISBN 9781119239765 (epub) | ISBN 9781119239710 (hardback)

Subjects: | MESH: Anatomy, Veterinary | Animals, Domestic—physiology

Classification: LCC SF761 (ebook) | LCC SF761 (print) | NLM SF 761 | DDC 636.089/1—dc23

LC record available at <https://lcn.loc.gov/2018007224>

Cover illustrations: © Anna Dee Fails; circle image: © Gretchen Delcambre

Cover design by Wiley

Set in 10.5/12pt Warnock by SPi Global, Pondicherry, India

CONTENTS

Dedication xii
About the Companion Website xiii

Chapter 1

Introduction to Anatomy and Physiology 1

Anatomical Nomenclature, Directional Terms, and Planes of Section 3
Microscopic Anatomy: Animal Cells and Tissues 5
 Epithelial Tissues 6
 Connective Tissues 11
 Muscle Tissue 13
 Nervous Tissue 15
The General Plan of the Animal Body 15

Chapter 2

Anatomy and Physiology of the Cell 21

Properties of Life 22
Chemical Composition of the Cell 24
 Water 24
 Proteins 25
 Lipids 26
 Carbohydrates 28
 Inorganic Substances 29
 Acids, Bases, and pH 29
Microscopic Study of the Cell 29
 Light Microscopy 30
 Electron Microscopy 32
The Cell Membrane 33
 Structure of the Membrane 33
 Intercellular Contact and Adhesion 35

Transport Across Cell Membranes 36
 Simple and Facilitated Diffusion 36
 Osmosis 38
 Active Transport 40
Membrane Potentials and Excitable Cells 41
 Resting Membrane Potential 41
 Excitable Cells and Action Potentials 42
Membrane Receptors and Intracellular Signaling 43
Cytoplasm and Cytoplasmic Organelles 47
 Cytoplasm 47
 The Golgi Apparatus 47
 The Endoplasmic Reticulum and Ribosomes 47
 Mitochondria 47
 Lysosomes 48
 Other Structures 48
Nucleus 49
 Structure of the Nucleus 49
 DNA and DNA Replication 50
 RNA: Transcription and Translation 51
 Biotechnology 53
Cell Division 55
 Mitosis 55
 Meiosis 56
Regulation of Cell Growth and Replication 57

Chapter 3

Embryology 59

Development of Germ Layers 60
Principles of Differentiation 63
Neurulation 63
Mesodermal Differentiation 64
Teratogenesis 66

Chapter 4**The Skeletal System 69**

- Functions of Bones 70
- Terminology 70
- Classification of Bones According to Gross Appearance 73
- Axial Skeleton 75
 - Skull 75
 - Vertebral Column 79
 - Sternum and Ribs 82
- Appendicular Skeleton 83
 - Thoracic Limbs 83
 - Pelvic Limbs 87

Chapter 5**Microscopic Anatomy and Growth and Development of Bone 91**

- Microscopic Anatomy and Formation of Bone 92
- Ossification 94
 - Endochondral (Intracartilaginous) Ossification 94
 - Intramembranous Ossification 96
- Physiology of Bone 96
 - Bone Mechanics and Remodeling 96
 - Calcium of Bone 97
- Fractures and Fracture Healing 97
- Other Pathologic Conditions 99

Chapter 6**Joints 101**

- Classification of Joints 102
 - Fibrous Joints 102
 - Cartilaginous Joints 103
 - Synovial Joints 103
 - Other Synovial Structures 104
- Movements of Joints 104
- Types of Synovial Joints 106
- Joints of the Axial Skeleton 107
- Joints of the Appendicular Skeleton 108
 - Joints of the Thoracic Limb 108
 - Joints of the Pelvic Limb 111
- Pathology of Joints and Related Structures 117

Chapter 7**Anatomy of the Muscular System 121**

- Anatomical Nomenclature of Muscles 122
- Types of Muscle Tissue 122

- Skeletal Muscle Organization 122
 - Muscle Attachments 123
 - Functional Grouping of Muscles 124
 - Synovial Structures 126
- Muscles of the Thoracic Limb 127
 - Extrinsic Muscles of the Thoracic Limb 130
 - Muscles Acting on the Shoulder Joint 131
 - Muscles Acting on the Elbow 132
 - Muscles Acting on the Distal Limb 133
- Muscles of the Pelvic Limb 135
 - Muscles Acting on the Hip Joint 135
 - Muscles Acting on the Stifle 141
 - Muscles Acting on the Hock 142
 - Muscles Acting on the Digit 142
- Muscles of the Head 143
 - Muscles of Mastication 143
 - Muscles of Facial Expression 144
 - Other Muscles of the Head 144
- Muscles of the Trunk and Neck 145
 - Extensors of the Vertebral Column 145
 - Flexors of the Vertebral Column 150
 - Abdominal Muscles 150
 - Muscles of Respiration 151

Chapter 8**The Equine Foot and Passive Stay Apparatus 153**

- Structure of the Foot 154
 - Bones and Cartilages 154
 - Cornified Tissues 155
 - Tendons 159
 - Ligaments 160
 - Synovial Structures 162
- Function 163
 - Concussion and Storage of Energy 163
- Stay Apparatus 163
 - Thoracic Limb 164
 - Pelvic Limb 166

Chapter 9**Microscopic Anatomy and Physiology of Muscle 171**

- Skeletal Muscle 172
 - Structure 172
 - Excitation, Contraction, and Relaxation 175
 - Strength of Contraction 179
 - Drugs That Affect Skeletal Muscle Function 181
 - Types of Muscle Contraction 182
- Smooth Muscle 182

Structure	183
Stress–Relaxation	183
Contraction and Relaxation	184
Role and Sources of Calcium	184
Action Potentials and Slow Waves	185
Autonomic Innervation	186
Cardiac Muscle	187
Excitation and Contraction	187
Cardiac Hypertrophy	188

Chapter 10

Anatomy of the Nervous System 189

Microscopic Neuroanatomy	192
Embryology	194
Central Nervous System	197
Brain	197
Meninges	200
Spinal Cord	202
Peripheral Nervous System	205
Spinal Nerves	205
Cranial Nerves	206
Autonomic Nervous System	206
Sympathetic Nervous System	208
Parasympathetic Nervous System	211
Enteric Nervous System	212

Chapter 11

Physiology of the Nervous System 213

Functional Regions of the Neuron	214
Physiology of the Nerve Impulse	214
Conduction Velocity and Myelination	216
Synaptic Transmission	217
Neurotransmitters	220
Neural Control of Skeletal Muscle	221
Reflexes Involving Skeletal Muscle	
Contraction	222
Voluntary Movement	223
Physiology of the Autonomic Nervous System	224
Regulation of Autonomic Nervous System Activity	224
Autonomic Neurotransmitters and Their Receptors	226
Regeneration and Repair in the Nervous System	227

Chapter 12

Sense Organs 229

Sensory Receptors	230
-------------------	-----

Somatosensation	232
Pain	232
Proprioception	233
Touch	234
Visceral Sensations	234
Chemical Senses	234
Gustation	234
Olfaction	235
Hearing and Balance	236
External Ear	236
Middle Ear	238
Internal Ear	238
Physiology of Hearing	239
Mechanisms of Balance	242
Vision	245
Ocular Adnexa	245
Globe	247
Lens	250
Visual Field and Light Path	251
Visual Pathways of the Brain	251

Chapter 13

Endocrinology 253

Hormones and Their Receptors	254
Chemical Classes of Hormones	254
Eicosanoids	255
Hormone Receptors	256
Cellular Effects of Peptide Hormones	256
Cellular Effects of Steroid and Thyroid Hormones	259
Negative and Positive Feedback Regulation	259
Hypothalamopituitary Axis	260
Hormones of the Neurohypophysis	262
Hormones of the Adenohypophysis	263
Growth Hormone	263
Adrenocorticotropic Hormone	264
Thyroid-Stimulating Hormone	265
Other Endocrine Glands	268
Parathyroid Glands	268
Pancreatic Islets	270
Epiphysis (Pineal Gland)	271

Chapter 14

The Integument 273

Integument	274
Skin	274
Epidermis	274

- Dermis 275
- Hypodermis 276
- Adnexa of the Skin 276
 - Hair 276
 - Glands 278
- Modified Epidermis 279
 - Hooves 280
 - Horns 282
 - Dewclaws 283
 - Chestnuts and Ergots 283
- Coat Color in Horses 283
- Wool 285

Chapter 15

Blood and Other Body Fluids 287

- Blood 288
 - Formed Elements of Blood and Hematopoiesis 289
 - Erythrocytes 290
 - Platelets 293
 - Leukocytes 294
- Plasma and Serum 295
- Blood pH 296
- Hemostasis and Coagulation 296
 - Platelets and the Endothelium 297
 - Intrinsic and Extrinsic Coagulation Pathways 297
- Lymph 300
- Serous Fluids 300

Chapter 16

Body Defenses and the Immune System 301

- Nonspecific Defenses 302
- Specific Immune Response 304
- B Lymphocytes 304
- Immunoglobulins 305
- T Cells and Cell-Mediated Immunity 306
- Lymphocyte Origin, Development, and Residence 308
- Active and Passive Immunities 308
- Immunological Surveillance 308
- Lymphatic System 309
 - Lymphatic Vessels 309
 - Lymph Nodes 309
 - Spleen 312
 - Thymus 313
 - Tonsils 314

Chapter 17

Anatomy of the Cardiovascular System 315

- Heart 316
 - Pericardium 316
 - Cardiac Anatomy 317
- Vessels 320
 - Blood Vessels 320
 - Lymphatic Vessels 320
- Pulmonary Circulation 320
- Systemic Circulation 321
 - Aorta 322
 - Arterial Distribution to the Head 323
 - Arterial Distribution to the Thoracic Limb 323
 - Arterial Distribution to the Pelvic Limb 324
- Veins 325
 - Cranial Vena Cava 326
 - Caudal Vena Cava 327
 - Portal System 327
- Fetal Circulation 327

Chapter 18

Physiology of the Heart and Circulation 331

- Basic Design and Function of the Cardiovascular System 332
- Cardiac Cycle 333
 - Systole 336
 - Diastole 336
 - Heart Sounds and Murmurs 336
 - Imaging the Heart 337
- Electrical Activity of the Heart 337
 - Sinoatrial Node and Heart Rate 337
 - Atrioventricular Node and Other Specialized Conductive Cells in the Heart 339
 - Electrocardiography and Arrhythmias 339
- Cardiac Output and Its Regulation 340
 - Ventricular Filling and Stroke Volume 340
 - Cardiac Contractility and Stroke Volume 341
- Structure and Function of Blood Vessels 341
 - Microscopic Structure of Blood Vessels 341
 - Function of Blood Vessels 342
- Regulation of Arterial Blood Pressure and Blood Volume 344
 - Neural Reflexes 345
 - Humoral Agents 345
 - Paracrine Agents 346
- Cardiovascular Function During Exercise and Hypovolemia 346

Chapter 19**The Respiratory System 349**

Upper Respiratory Tract 350

Nose 350

Paranasal Sinuses 352

Pharynx 354

Larynx 354

Trachea and Bronchi 357

Thorax 357

Lungs 358

Pleura 360

Physiology of Respiration 360

Ventilation 360

Gas Exchange 363

Gas Transport in Blood 365

Control of Ventilation 366

Chapter 20**Anatomy of the Digestive System 369**

Organization of the Digestive System 370

Mouth 371

Teeth 372

Tongue 377

Pharynx 378

Tonsils 378

Esophagus 380

Simple Stomach 380

Ruminant Stomach 381

Ruminoreticulum 384

Omasum 385

Abomasum 385

Small Intestine 385

Large Intestine 387

Ruminants 387

Pig 387

Horse 388

Peritoneal Features 388

Accessory Digestive Organs 389

Salivary Glands 389

Pancreas 389

Liver 391

Chapter 21**Physiology of Digestion 395**

Pregastric Physiology 397

Prehension and Chewing 397

Saliva and Salivary Glands 397

Swallowing 398

Ruminant Forestomach 398

Fermentative Digestion 398

Forestomach Motility 400

Reticular, or Esophageal, Groove 400

Omasum 401

Gastric Physiology 401

Gastric Glands and Secretions 401

Gastric Motility 402

Physiology of the Small Intestine, Exocrine

Pancreas, and Liver 403

Small Intestine Secretions and

Motility 403

Exocrine Pancreas 404

Liver Digestive Function and

Secretion of Bile 406

Nutrient Absorption in the Small

Intestine 407

Physiology of the Cecum and

Colon 409

Cecum and Colon of the Horse 410

Rectum and Defecation 410

Neuroendocrine Control of Feeding 411

Chapter 22**Nutrition and Metabolism 413**

Nutrition 414

Metabolism 414

Absorptive State: Anabolism 415

Postabsorptive State: Catabolism 417

Energy Needs During Exercise 418

Blood Glucose in Ruminants 419

Ketosis 419

Chapter 23**The Urinary System 421**

Anatomy of the Kidney 422

Blood and Nerve Supply 424

Ureters, Urinary Bladder, and Urethra 424

Micturition 426

Overview of Function and Histology

of the Kidneys 426

Glomerular Filtration 429

Proximal Tubule Transport 430

Concentration and Dilution of Urine: Role

of the Loop of Henle and Collecting Duct

Transport 431

Sodium Chloride and Water Reabsorption by
the Loop of Henle 432Collecting Duct Transport and Antidiuretic
Hormone 433

Osmotic Regulation of Antidiuretic Hormone 434
Polyuria and Polydipsia 434
 Sodium, Potassium, and Aldosterone 434
 Urine Acidification 436
 Regulation of Acid-Base Balance 436
 Extracellular and Intracellular Buffers 436
 Classification of Alkalosis and Acidosis and Compensation 438

Chapter 24

Anatomy of the Male Reproductive System 441

Testis 442
 Epididymis 444
 Ductus Deferens 444
 Scrotum 445
 Inguinal Canal 447
 Descent of the Testis 447
 Castration 449
 Accessory Sex Glands 449
 Ampullae 450
 Vesicular Glands 450
 Prostate Gland 450
 Bulbourethral Glands 451
 Penis 451
 Prepuce 453
 Muscles of the Male Genitalia 453
 Blood and Nerve Supply of the Male Genitalia 453

Chapter 25

Physiology of Male Reproduction 455

Seminiferous Tubules
 and Spermatogenesis 456
 Seminiferous Tubules 456
 Germ Cells and Spermatogenesis 457
 Spermatozoa Morphology and Spermatogenesis 457
 Rates and Timing of Spermatogenesis 460
 Epididymis 460
 Semen and Semen Technology 461
 Hormones of Male Reproduction 462
 Endocrine Regulation of Testicular Function 462
 Testosterone and Its Effects 463
 Erection and Ejaculation 463

Chapter 26

Anatomy of the Female Reproductive System 465

Ovaries 466
 Uterine Tubes 468
 Uterus 469
 Vagina 471
 Vestibule and Vulva 472
 Blood and Nerve Supply of the Female Reproductive Tract 473

Chapter 27

The Ovary and Estrous Cycles 475

Oogenesis 476
 Secondary Follicles 476
 Hormones and Follicular Development 477
 Ovulation 481
 Luteinizing Hormone Surge 481
 Spontaneous and Reflex Ovulators 481
 Seasonal Transition 481
 Corpus Luteum 482
 Phases of the Estrous Cycle 483
 Proestrus 484
 Estrus 484
 Metestrus 484
 Diestrus and Anestrus 484
 Puberty 484
 Specifics of Selected Estrous Cycles 485
 Mare 485
 Cow 485
 Ewe 486
 Sow 487

Chapter 28

Pregnancy and Parturition 489

Fertilization 490
 Spermatozoa Transport and Viability 490
 Gamete Fusion and Early Embryonic Development 491
 Implantation and Placentation 493
 Hormones of Pregnancy 496
 Progesterone 496
 Equine Chorionic Gonadotrophin 497
 Relaxin 497
 Pregnancy Diagnosis 497
 Parturition 498
 Late Gestation 498

<i>Initiation of Parturition</i>	498
<i>Oxytocin</i>	499
Fetal Presentations and Delivery	499
Dystocia	500

Chapter 29

Anatomy and Physiology of the Mammary Glands 501

Mammary Glands of the Cow	502
<i>Suspensory Apparatus</i>	504
<i>Blood Supply</i>	504
<i>Lymphatic Vessels</i>	506
Microscopic Anatomy of the Mammary Gland	506
Mammary Glands of Sheep and Goats	508
Mammary Glands of Swine	508
Mammary Glands of the Horse	509
Physiology of Lactation	509
<i>Composition of Milk</i>	509
<i>Milk Secretion</i>	510
<i>Lactogenesis</i>	511
<i>Galactogenesis</i>	512
<i>Milk Ejection or Letdown</i>	513
<i>Colostrum</i>	514
<i>Cessation of Lactation</i>	515

Chapter 30

Poultry 517

Integument	518
Body Design	520
Skeleton and Bone	522
Musculature	524
Gastrointestinal System	524
Respiratory System	527
<i>Ventilation and Gas Exchange</i>	528
Cardiovascular System	530
Lymphatic System	531
Urinary System	531
Female Reproductive System	534
<i>Egg Formation and Oviposition</i>	535
Male Reproductive System	537
Sex Chromosomes	538
Reproduction and Photoperiods	538

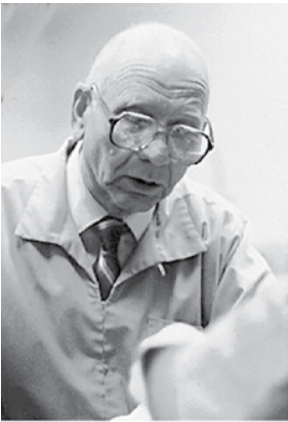
Appendix: Abbreviations 539

Bibliography 545

Index 547

Note: throughout the text, **clinical extracts** are set in blue type. These are examples of the application of basic anatomy and/or physiology in clinical settings.

DEDICATION



Rowan Frandson
1920 – 2015

Since its first edition in 1964, Rowan Frandson's textbook has been a mainstay of animal and veterinary science courses throughout the world. Rowan Frandson earned Bachelor's, Master's, and Doctor of Veterinary Medicine degrees from Colorado State University. He practiced veterinary medicine for a short time before joining the faculty of Colorado State University where he taught both human and veterinary anatomy. Dr. Frandson's original goal for his textbook was to provide a thorough grounding in the principles of anatomy and physiology and to apply these to the species of particular importance in agricultural practice. Now entering its eighth edition, *Anatomy and Physiology of Farm Animals* seeks to continue the tradition of accessible information for students in the fields of agriculture and animal science, while simultaneously updating the text with new understanding in physiology, biomedicine, and applied anatomy.

ABOUT THE COMPANION WEBSITE

This book is accompanied by a companion website:

www.wiley.com/go/fails/anatomy

The website includes:

- Multiple choice questions
- Helpful word roots
- Quiz questions
- Additional figures and drawings for practice

INTRODUCTION TO ANATOMY AND PHYSIOLOGY

Anatomical Nomenclature, Directional Terms, and Planes of Section

Microscopic Anatomy: Animal Cells and Tissues

Epithelial Tissues

Connective Tissues

Muscle Tissue

Nervous Tissue

The General Plan of the Animal Body

Learning Objectives

- Define and be able to explain the significance of the ***bold italic*** terms in this chapter.
- Appreciate the specific subdisciplines that are part of the study of anatomy.
- Be able to use anatomical directional terms correctly in describing anatomy.
- Describe how to classify structures as part of a body system, organ, tissue, or a cell type.
- Briefly outline the four basic tissue types and their primary subcategories. What are the distinguishing features of each of the primary subcategory tissue types? Where might these tissue types or their primary subcategories be found?
- Describe the primary components of blood and how serum differs from plasma.
- What is the difference between *secretion* and *excretion*?
- What is the difference between an *endocrine* gland and an *exocrine* gland? Provide examples for each, as well as one tissue that has both endocrine and exocrine glands.

- How is the embryonic coelom divided in the adult and what are the serosa associated with the cavities and structures in those cavities?
- Understand the concept of “potential” spaces as applies to body cavities, and identify by name the serous membranes that line each of the body cavities.

The term *anatomy* literally translates as “to cut apart,” as it acknowledges the central role of dissection in the study of body structure. In contemporary usage, though, it has come to refer more generally to the science that deals with the form and structure of all organisms.

In contrast to anatomy, which deals primarily with structure, *physiology* is the study of the integrated functions of the body and the functions of all its parts (systems, organs, tissues, cells, and cell components), including biophysical and biochemical processes.

Study in a typical *gross anatomy* laboratory is often based primarily on dissection of animal cadavers. Dissection coupled with handling and direct observation of grossly visible structures gives the student a concept of the shape, texture, location, and relations of structures visible to the unaided eye that can be gained in virtually no other way. Similarly, the use of the microscope with properly prepared tissue sections on slides through which the student can navigate fosters a comprehensive understanding of structures that are so small they cannot be seen without microscopic assistance (*microscopic anatomy*).

In the physiology laboratory, the student studies the response of whole animals, isolated organs, or individual cells to changes in their environment (both internal and external).

Changes may be induced by almost any agent or manipulation, for example, drugs, changes in temperature or altitude, surgical modifications (such as neutering), and changes in diet. Monitoring of the responses may be as simple as monitoring changes in body weight or as complex as

measuring the electrical potential across the cell membrane of a single cell.

Although anatomy and physiology are commonly pursued as more or less independent disciplines, they are both facets of the study of the animal body. A thorough knowledge of structure imparts much information about its function. However, a mere description of structure without describing function would be of little practical value. Conversely, it is impossible to gain a thorough understanding of function without a basic knowledge of structure.

The science of anatomy has become so extensive that it is now divided into many specialized branches. In fact, *Dorland's Medical Dictionary* defines 32 subdivisions of anatomy. This text chiefly describes *gross (macroscopic) anatomy*. This is the study of the form and relationships (relative positions) of the structures of the body that can be seen with the unaided eye. *Comparative anatomy* is a study of the structures of various species of animals, with particular emphasis on those characteristics that aid in classification. *Embryology* is the study of developmental anatomy, covering the period from conception (fertilization of the egg) to birth. Another large branch of anatomy consists of the study of tissues and cells that can be seen only with the aid of a microscope. This is known as *microscopic anatomy*.

The most recent development in the study of anatomy is *ultrastructural cytology*, which deals with portions of cells and tissues as they are visualized with the aid of the electron microscope. The term *fine structure* is used frequently in reference to structures seen in electron micrographs (photographs made with the electron microscope).

Our approach to the study of anatomy will be chiefly by systems, an approach which can be described as *systematic anatomy*. To name a particular subdivision of systematic anatomy, the suffix *-ology*, which means *branch of knowledge or science*, is added to the root word referring to the system. Table 1-1 indicates the commonly accepted systems, the name of the study of

Table 1-1. Nomenclature for Systematic Anatomy

System	Name of Study	Chief Structures
Skeletal system	Osteology	Bones
Articular system	Arthrology (Syndesmology)	Joints
Muscular system	Myology	Muscles
Digestive system	Splanchnology	Stomach and intestines
Respiratory system	Splanchnology	Lungs and airways
Urinary system	Splanchnology	Kidneys and urinary bladder
Reproductive system	Splanchnology	Ovaries and testes
Endocrine system	Endocrinology	Ductless glands
Nervous system	Neurology	Brain, spinal cord, and nerves
Circulatory system	Cardiology	Heart and vessels
Sensory system	Esthesiology	Eye and ear

those systems, and the chief structures involved in each system.

Physiology has also become so extensive in scope that many areas of specialization are recognized. Like anatomy, these may be based on body systems (e.g., neurophysiology, gastrointestinal physiology, cardiovascular physiology, respiratory physiology, endocrine physiology, and reproductive physiology) or the level of biological organization (cell physiology and organismal physiology). All of these subdivisions become the parts of such overall areas of study as applied physiology, comparative physiology, pathophysiology, medical physiology, and mammalian physiology. We will be concerned with these systems and studies as they relate specifically to farm animals.

Anatomical Nomenclature, Directional Terms, and Planes of Section

Anatomy is a very old scientific discipline, and anatomists have been giving names to body parts for a very long time, sometimes naming the structure after themselves, or using Greek (Gr.) or Latin (L.) terms to describe a structure. In the online version of this text, helpful word roots have been provided for each chapter to help

the reader understand the terminology used for anatomical nomenclature. It should also not be surprising that many anatomical constructs have been referred to by a variety of names over the centuries, and veterinary anatomy is further burdened by nonuniform attempts to adopt names of homologous human structures. As a consequence, there are sometimes multiple names for anatomical structures. A committee of The World Association of Veterinary Anatomists (WAVA) debates and decides the single, most appropriate term for structures in veterinary anatomy. In 1963 the first “Nomina Anatomica Veterinaria” (literally, “Veterinary Anatomical Names”) or NAV came into widespread use. This guide has since undergone a series of revisions, and the latest version (6th edition, revised) is available on the WAVA website. The NAV is set up as a list of anatomical terms in their correct Latin, laid out logically by system and body region. A few basic words (e.g., “nervus” for “nerve,” “os” for “bone”) will help the industrious reader who starts browsing the document. This text endeavors to abide by the NAV guidelines for naming structures, deviating only when common usage overwhelmingly argues for an alternative term.

In order to communicate with others about the physical location and relationships of anatomical structures, a specialized

lexicon that describes locations and directions within the body has been developed. Since the body is mobile, the frames of reference must apply regardless of the position or direction of the animal (Fig. 1-1). Directional terminology in animal anatomy differs from that in human anatomy because of the orientation of bipedal versus quadrupedal stance. The student of animal anatomy will see that the terms *anterior*, *posterior*, *superior*, and *inferior* are not used except in two specific body regions: the eyes and teeth (see Chapters 12 and 20).

Cranial is a directional term meaning toward the head. The shoulder is cranial to the hip; it is closer to the head than is the hip.

Caudal means toward the tail. The rump is caudal to the loin.

Rostral and **caudal** are directional terms used in reference to features of the head to mean toward the nose (rostral) or toward the tail (caudal).

The **median plane** is an imaginary plane passing through the body so as to divide the body into equal right and left halves. A beef carcass is split into two halves on the median plane.

A **sagittal plane** is any plane parallel to the median plane. The median plane is sometimes called the **midsagittal plane**. Sagittal planes other than the median plane are frequently referred to as **paramedian planes**.

A **transverse plane** is at right angles to the median plane and divides the body into cranial and caudal segments. A cross-section of the body would be made on a transverse plane. The cinch of a saddle defines a transverse plane through the thorax of a horse.

A **horizontal plane** is at right angles to both the median plane and transverse planes. The horizontal plane divides the body into dorsal (upper) and ventral (lower) segments. If a cow walks into a lake until the water comes above the chest, the

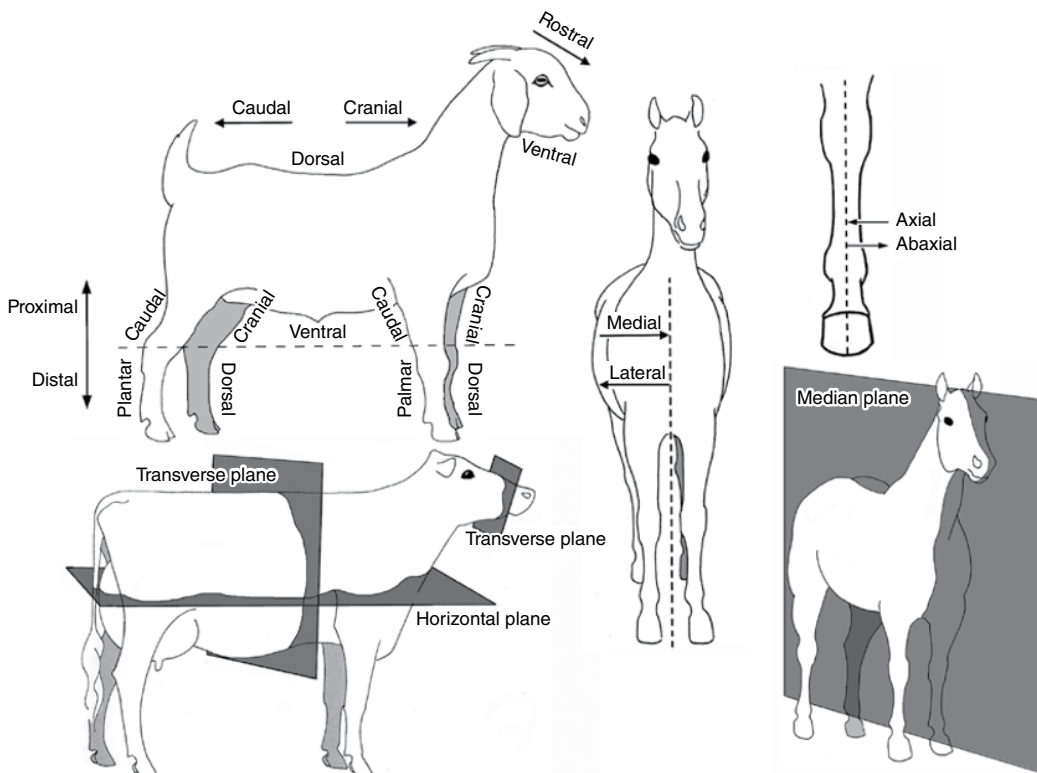


Figure 1-1. Directional terms and planes of the animal body.

surface of the water is in a horizontal plane in relation to the cow.

In addition to the planes of reference, other descriptive terms are valuable in defining an area we wish to discuss.

Medial is an adjective meaning close to or toward the median plane. The heart is medial to the lungs; it is closer to the median plane than are the lungs. The chestnut is on the medial aspect (inside) of a horse's limb; it is on the side closest to the median plane.

Lateral is the antonym of medial; it means away from the median plane. The ribs are lateral to the lungs, that is, farther from the median plane.

Dorsal means toward or beyond the backbone or vertebral column. The kidneys are dorsal to the intestines; they are closer to the vertebral column. **Dorsum** is the noun referring to the dorsal portion or back. A saddle is placed on the dorsum of a horse.

Ventral means away from the vertebral column or toward the midabdominal wall. The udder lies along the ventral part of the body of a cow, the part of the body farthest from the vertebral column.

Deep and **internal** indicate proximity to the center of an anatomical structure. The humerus (arm bone) is deep in relation to all other structures in the arm.

Superficial and **external** refer to proximity to the surface of the body. Hair is superficial to all other structures of the body.

Proximal means relatively close to a given part, usually the vertebral column, body, or center of gravity. Proximal is generally used in reference to an extremity or limb. The carpus or knee is proximal to the foot.

Distal means farther from the vertebral column, and like proximal, it is generally used in reference to portions of an extremity. The hoof is distal to the carpus or knee.

In describing the thoracic limb (forelimb) distal to (below) the carpus, **palmar** refers to the flexor or caudal surface. **Dorsal** is used in this region to refer to the opposite (cranial) side. In describing the pelvic limb (hindlimb) distal to the hock, **plantar** refers to the caudal surface, and dorsal here, too, refers to the side directly opposite (the cranial side).

When referring to structures in the limbs (especially distal limbs), an additional pair of directional terms is often utilized. Using a plane that bisects the limb on its center axis into medial and lateral halves, structures that are closer to that center axis are described as being **axial**, while those that are further away (closer to either the medial or lateral sides) are said to be more **abaxial**.

The suffix **-ad** is used to form an adverb from any of the above-named directional terms, indicating movement in the direction of or toward, as in **dorsad**, **ventrad**, **caudad**, and **cranialad**, that is, respectively, toward the dorsum, toward the belly, toward the tail, and toward the head. For example, the superficial digital flexor tendon inserts on the **distal** limb (the adjective **distal** describes noun **limb**), but it passes **distad** as it runs along the palmar aspect of the manus (the adverb **distad** describes the verb **passes**).

Prone refers to a position in which the dorsal aspect of the body or any extremity is uppermost. **Pronation** refers to the act of turning toward a prone position.

Supine refers to the position in which the ventral aspect of the body or palmar or plantar aspect of an extremity is uppermost. **Supination** refers to the act of turning toward a supine position.

The term **median** is often confused with **medial**. Both words are used as adjectives when describing anatomical structures. **Median** means on the midline (as in the median plane, or the median artery). **Medial** is subtly different, as it means toward the midline and is a term of relativity (as it implies that there is a lateral).

Microscopic Anatomy: Animal Cells and Tissues

All living things, both plants and animals, are constructed of small units called **cells**. The simplest animals, such as ameba, consist of a single cell that is capable of performing all functions commonly associated with life. These functions include growth (increase in size), metabolism

(use of food), response to stimuli (such as moving toward light), contraction (shortening in one direction), and reproduction (development of new individuals of the same species).

A typical eukaryotic cell is always surrounded by a **cell membrane**. Within the cell membrane are the organelles of the cell, suspended in the liquid-like **cytoplasm** that fills the cell. The most important organelle, and the defining feature of eukaryotic cells, is the membrane bound **nucleus** that contains the genetic material for the organism (Fig. 1-2). Detailed information about the remaining organelles and the structure of the individual cell is described in Chapter 2. Tissues are discussed in this chapter.

In complex animals, cells specialize in various functions to support the animal and

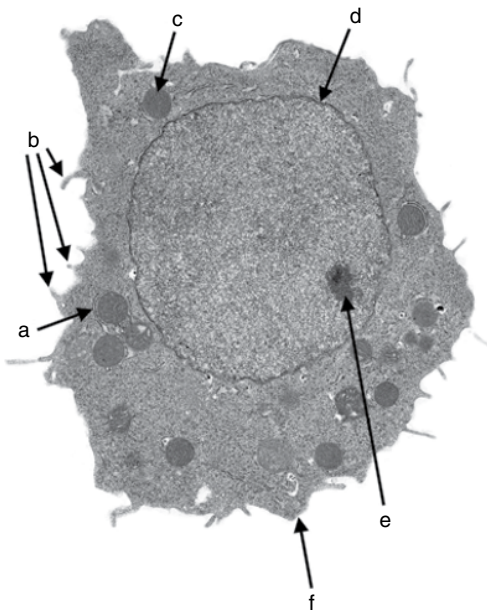


Figure 1-2. A cell as seen with an electron microscope. The lightly colored areas in the nucleus (euchromatin) indicate that this hepatic (liver) cell is actively undergoing transcription. a, rough endoplasmic reticulum; b, microvilli; c, mitochondrion; d, nuclear envelope; e, nucleolus; f, plasma membrane. *Source:* image courtesy of D.N. Rao Veeramachaneni, BVSc, MScVet, PhD, Professor of Biomedical Sciences, Colorado State University.

the hierarchy of the organization of these cells is important when describing the anatomy of an animal. A group of specialized cells is a **tissue**. For example, cells that specialize in conducting impulses comprise nervous tissue whereas cells that specialize in holding structures together make up connective tissue. Various tissues are associated in functional groups called **organs**. The stomach is an organ that functions in digestion of food. A group of organs that participate in a common enterprise make up a **system**. For example, the stomach, liver, pancreas, and intestines are all organs that are part of the digestive system.

The primary types of tissues include: (1) **epithelial tissues**, which cover the surface of the body, line body cavities, and form glands; (2) **connective tissues**, which support and bind other tissues together and from which, in the case of bone marrow, the formed elements of the blood are derived; (3) **muscle tissues**, which specialize in contracting; and (4) **nervous tissues**, which conduct impulses from one part of the body to another.

Epithelial Tissues

In general the nonglandular epithelial tissues are classified as **simple** (composed of a single layer) or **stratified** (many-layered). Each of these types is further subdivided according to the shape of the individual cells within it (Fig. 1-3). Simple epithelium includes squamous (platelike) cells, cuboidal (cubic) cells, columnar (cylindrical) cells, and pseudostratified columnar cells. The shape of the cells and the number of layers are then used together to specifically describe a type of epithelial tissue that often has a specific function. Since epithelial tissues form the outer covering of many organs, they are responsible for forming barriers, preventing bacteria or other materials from crossing the barrier. This epithelial barrier must still allow the organ to function in secreting, absorbing, excreting, or transporting other molecules and macromolecules, or conveying sensory information such as taste from the tongue.

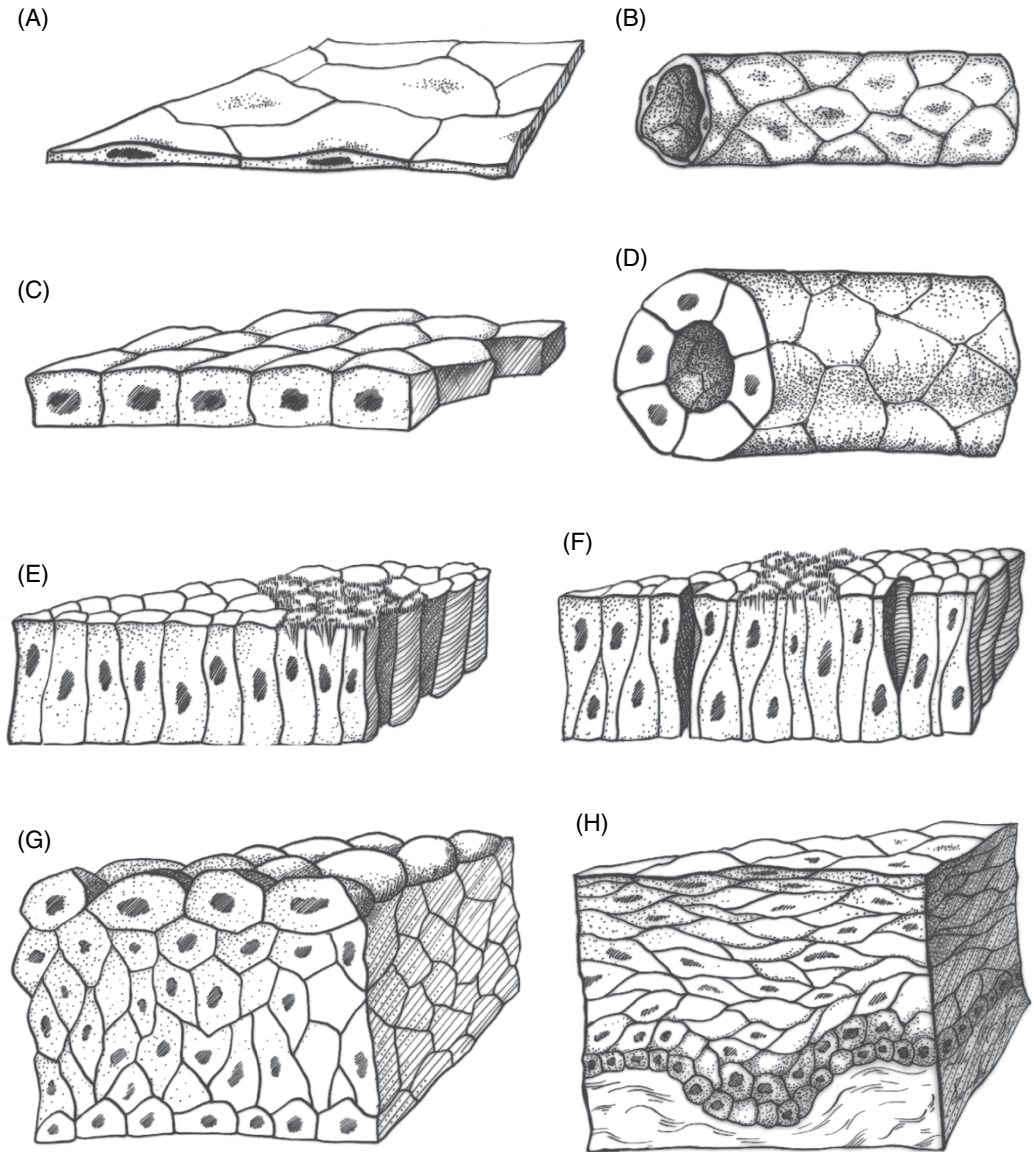


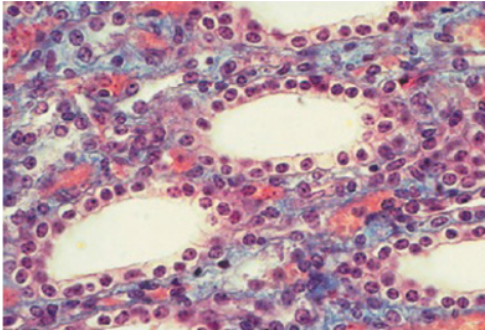
Figure 1-3. Primary types of epithelial tissues. (A) Simple squamous. (B) Simple squamous in tubular arrangement. (C) Simple cuboidal. (D) Simple cuboidal arranged as a duct. (E) Simple columnar. (F) Pseudostratified columnar with cilia. (G) Transitional. (H) Stratified squamous.

Simple squamous epithelium consists of a thin layer of plate-like cells. They are expanded laterally but have little thickness or depth. The edges are joined somewhat like a mosaic tile covering a floor. A layer of simple squamous epithelium has little tensile strength and is found only as a covering layer for stronger tissues. Simple squamous epithelium is found where a smooth surface is required to reduce fric-

tion. The linings of body cavities and blood vessels, and the serosa that covers many organs in the abdomen and thorax, are all composed of simple squamous epithelium.

Simple cuboidal epithelial cells (Fig. 1-4) are approximately equal in all dimensions. They are found in some ducts and in passageways in the kidneys. The active tissue of many glands is composed of cuboidal cells.

(A)



(B)

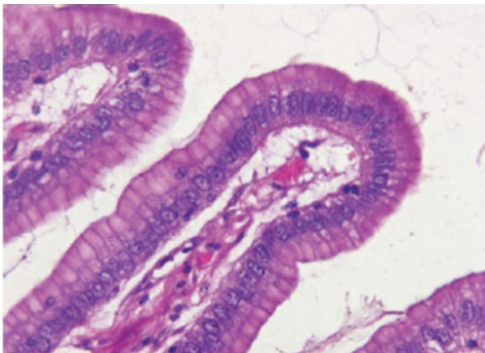


Figure 1-4. (A) Simple cuboidal epithelial cells lining the collecting tubules of the kidney. (B) Simple columnar epithelium of the colonic mucosa. *Source:* (A) from Bacha & Wood, 1990. Reproduced with permission of John Wiley & Sons, Inc.; (B) courtesy of Sandra Pitcaithley, DVM.

Simple columnar epithelial (Fig. 1-4) cells are cylindrical. They are arranged somewhat like the cells in a honeycomb. Some columnar cells have *cilia*, small, hair-like structures or organelles that extend from the cell surface to the free extremity. Cilia can be motile, sometimes moving in rhythmic waves, working together to move liquids or particles past the cell. These cells often function as protective barriers, lining regions of the digestive tract.

Pseudostratified columnar epithelium (Fig. 1-5) is composed of a single layer of columnar cells. However, these cells vary in length, giving the appearance of more than one layer, or stratum. This type of epithelium is found ciliated in the upper respiratory tract, whereas nonciliated

pseudostratified columnar epithelium is found in the epididymis of the male reproductive tract.

Stratified epithelium consists of more than one layer of epithelial cells and includes stratified squamous, stratified columnar, and transitional epithelia. The deepest layer of the stratified epithelium attaches to the basement membrane and is the actively dividing layer. The shape of the cells in the basal layer, as compared to the more superficial layers of stratified epithelium, may vary as the cells of the epithelium mature.

Stratified squamous epithelium (Fig. 1-5) forms the outer layer of the skin and the lining of the proximal portion of the digestive tract as far as the stomach. In ruminants, stratified squamous epithelium also lines the forestomach (rumen, reticulum, and omasum). Stratified squamous epithelium is the thickest and toughest of the epithelia, consisting of many layers of cells. From deep to superficial, these layers include the **basal layer** (*stratum basale*), the **parabasal layer** (*stratum spinosum*), **intermediate layer** (*stratum granulosum*), and **superficial layer** (*stratum corneum*). The deepest layer, the stratum basale, contains the actively growing and multiplying cells. These cells are somewhat cuboidal, but as they are pushed toward the surface, away from the blood supply of the underlying tissues, they become dead, flattened cells, lacking a nucleus or organelles. The stratum corneum can often be many (15 to 20) layers of cells thick and the cytoplasm of these cells is filled with keratin, resulting in a tough, lifeless layer of cells that are constantly in the process of peeling off. When subjected to friction, this layer of cells becomes very thick, and calluses are formed.

Stratified columnar epithelium is composed of more than one layer of columnar cells and is found lining part of the pharynx and salivary ducts.

Transitional epithelium (Fig. 1-5) is unique in that it allows an organ to stretch without rupture, and is primarily found in the urinary bladder and ureters. Transitional

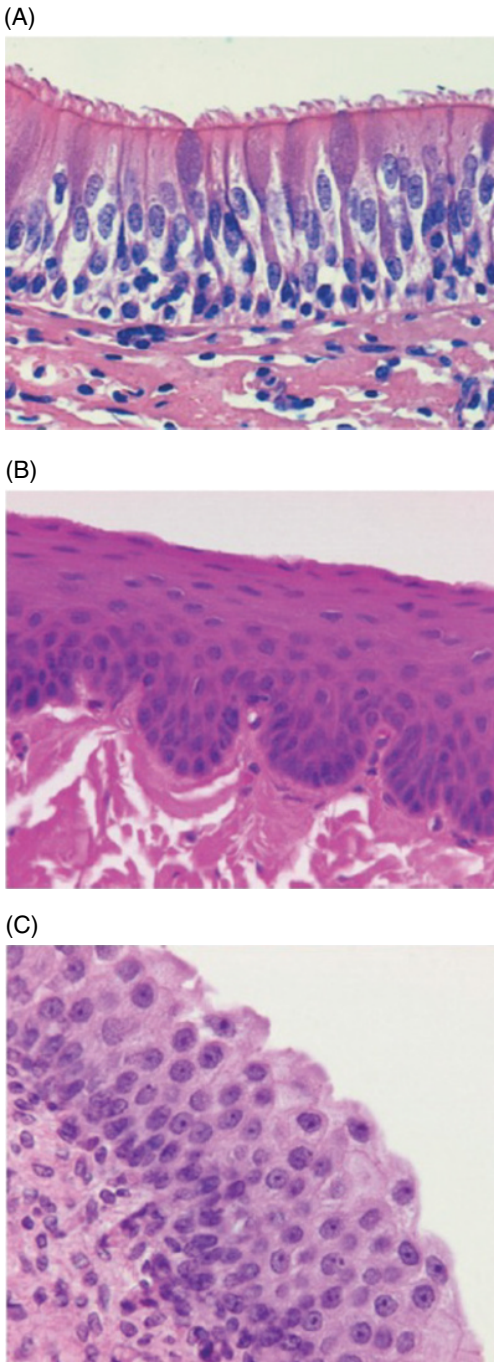


Figure 1-5. (A) Pseudostratified columnar epithelium characteristic of respiratory epithelium. Note ciliated surface. (B) Stratified squamous epithelium, nonkeratinized. (C) Transitional epithelium of the urinary bladder. *Source:* (A) from Bacha & Wood, 1990. Reproduced with permission of John Wiley & Sons, Inc.; (B) courtesy of Sandra Pitcaithley, DVM.

epithelium can become many cells thick when the bladder is small and empty, and stretch out to a single layer when completely filled.

Glandular epithelial cells are specialized for secretion or excretion. **Secretion** is the release of a substance that has been synthesized by the cell and that usually affects other cells in other parts of the body. **Excretion** is the expulsion of waste products, often by specialized tissues.

Glands may be classified either as **endocrine glands** (glands without ducts, which empty their secretory products directly into the bloodstream), or as **exocrine glands** (glands that empty their secretory products on an epithelial surface, usually by means of ducts).

The endocrine glands are an important part of the control mechanisms of the body, because they produce special chemicals known as **hormones**. The endocrine glands are discussed in Chapter 13. Hormones carried to all parts of the body by the blood constitute the humoral control of the body. Humoral control and nervous control are the two mechanisms maintaining **homeokinesis**, also called **homeostasis**, a relatively stable but constantly changing state of the body. Humoral responses to stimuli from the environment (both external and internal) are slower and longer acting than responses generated by way of the nervous system. The nervous system is described in some detail in Chapters 10 and 11.

Collectively, the endocrine glands constitute the **endocrine system**, which is studied in **endocrinology**. However, exocrine glands are scattered throughout many systems and are discussed along with the systems to which they belong, such as the digestive, urogenital, and respiratory systems. Some organs may have both types of glandular secretion. For example, the liver and the pancreas are both able to secrete substances in an endocrine and exocrine fashion.

According to their morphologic classification (Fig. 1-6), a gland is **simple** if the duct does not branch, and **compound** if it

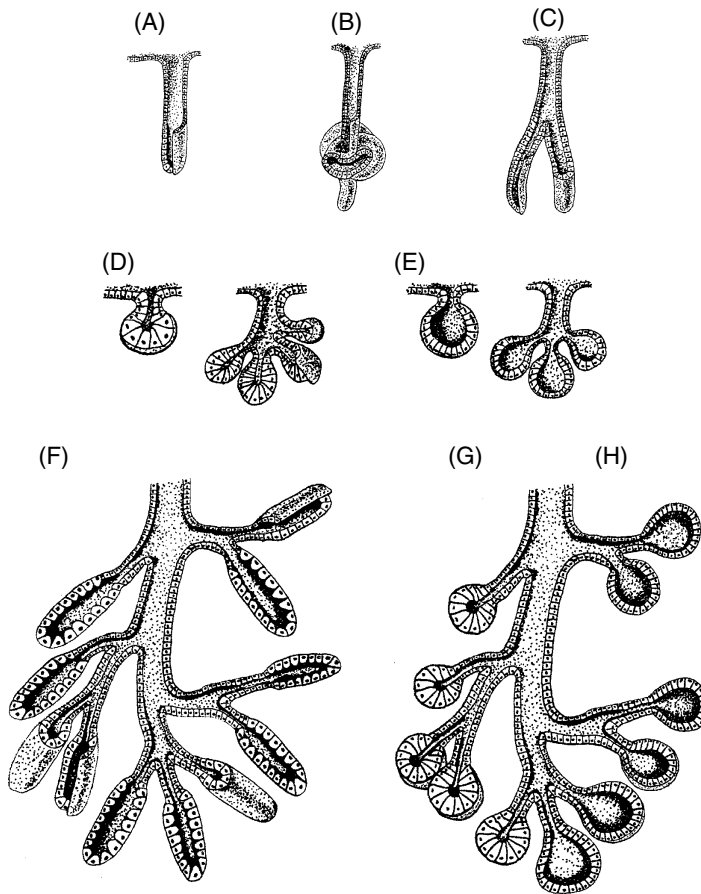


Figure 1-6. Types of exocrine glands and comparison of simple and compound glands. (A) Simple tubular gland. (B) Simple coiled tubular gland. (C) Simple branched tubular gland. (D, E) Simple acinar/alveolar glands and simple branched acinar/alveolar glands. (F) Compound tubular gland. (G, H) Compound acinar/alveolar glands. Compound tubuloacinar/tubuloalveolar glands consist of either a mixture of tubular and acinar/alveolar secretory units or tubular secretory units “capped” by acini or alveoli. *Source:* Eurell and Frappier, 2006. Reproduced with permission of John Wiley & Sons.

does. If the secretory portion of the gland forms a tube-like structure, it is called **tubular**; if the secretory portion resembles a grape or hollow ball, it is called **alveolar** or **acinar** (the terms are used interchangeably). A combination of tubular and alveolar secretory structures produces a **tubuloalveolar gland**.

Compound glands often are subdivided grossly into **lobes**, which in turn may be further subdivided into **lobules**. Hence, the connective tissue partitions (called **septa**) are classified as interlobar septa if they separate lobes, and as interlobular septa if they separate lobules. Similar

terminology may be applied to ducts draining lobes or lobules of glands, that is, interlobar ducts and interlobular ducts, respectively.

Another classification of glands is based on the manner in which their cells elaborate their secretion. By this classification, the most common type is the **merocrine gland**. Merocrine glands pass their secretory products through the cell membrane without any appreciable loss of cytoplasm or noticeable damage to the cell membrane. The **holocrine gland** is the least common type. After the cell fills with secretory material, the entire holocrine gland cell

discharges to the lumen of the gland to constitute the secretion. Sebaceous glands associated with hair follicles of the skin are the most common holocrine glands. An intermediate form of secretion is conducted by *apocrine glands*, in which a small amount of cytoplasm and cell membrane is lost with the secretion. This type of secretion is sometimes described for the prostate gland and some sweat glands.

Connective Tissues

Connective tissues, as the name implies, serve to connect other tissues. They give form and strength to many organs and often provide protection and leverage. Connective tissues include elastic tissue, collagenous (white fibrous) tissue, reticular (netlike) tissue, adipose (fat) tissue, cartilage, and bone.

Elastic tissue contains kinked fibers that tend to regain their original shape after being stretched. This tissue is found in the ligamentum nuchae, a strong band that helps to support the head, particularly in horses and cattle. Elastic tissue also is found in the abdominal tunic, in the ligamenta flava of the spinal canal, in elastic arteries, and mixed with other tissues wherever elasticity is needed.

Collagenous (white fibrous) tissue is found throughout the body in various forms. Individual cells (fibroblasts) produce long proteinaceous fibers of collagen, which have remarkable tensile strength. These fibers may be arranged in regular repeating units, or laid down in a more random, irregular arrangement.

In *dense regular connective tissue* (Fig. 1-7), the fibers are arranged in parallel bundles, forming cords or bands of considerable strength. These are the *tendons*, which connect muscles to bones, and the *ligaments*, which connect bones to bones. The fibers of *dense irregular connective tissue* are arranged in a thick mat, with fibers running in all directions. The dermis of the skin, which may be tanned to make leather, consists of dense

irregular connective tissue. This forms a strong covering that resists tearing and yet is flexible enough to move with the epidermis, or surface of the body.

Areolar (loose) connective tissue (Fig. 1-7) is found throughout the body wherever protective cushioning and flexibility are needed. For example, blood vessels are surrounded by a sheath of areolar connective tissue, which permits the vessels to move, and yet protects them.

Beneath the dermis is a layer of loosely arranged areolar connective tissue fibers that attaches the skin to underlying muscles. This attachment is flexible enough to permit movement of the skin. It also permits the formation of a thick layer of fat between the skin and underlying muscles. Whenever the skin is adherent to bony prominences because of a lack of areolar tissue, the skin will not move, and no layer of fat can form. This feature is seen in beef cattle that have *ties*; in this case, the skin over the back shows large dimples where fat cannot fill in because the skin is adherent to the vertebrae.

Reticular connective tissue consists of fine reticular fibrils made by fibroblasts, which forms a scaffolding for other cells. Reticular tissue makes up part of the framework of endocrine and lymphatic organs.

Adipose tissue (fat) tissue (Fig. 1-8) forms when connective tissue cells called *adipocytes* store fat as inclusions within the cytoplasm of the cell. As more fat is stored, the cell eventually becomes so filled with fat that the nucleus is pushed to one side of the cell, which, as a result, becomes spherical. Most fat in the animal body is white, although it may have a yellow tinge in horses and some breeds of dairy cattle because of carotenoids in the feed.

In contrast to this white fat, a small amount of *brown fat* may be found in domestic mammals, hibernating mammals, rodents, and human infants. The brown fat is found between the scapulae, in the axillae, in the mediastinum, and in association with mesenteries in the abdomen. Brown fat is able to generate heat to protect

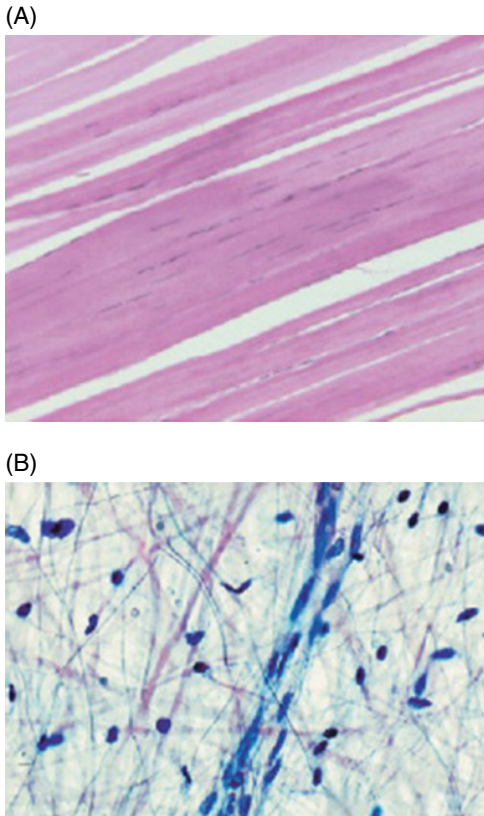


Figure 1-7. (A) Dense, regular connective tissue in a longitudinal section of tendon. (B) Areolar (loose) connective tissue from mesentery. Note the fine elastic fibers and thicker collagen fibers. A capillary runs from top to bottom in this view. Most cells outside the capillary are fibroblasts. *Source:* (A) courtesy of Sandra Pitcaithley, DVM; (B) Bacha & Wood, 1990. Reproduced with permission of John Wiley & Sons, Inc.

young mammals and hibernating mammals from extreme cold.

Cartilage is a special type of connective tissue that is firmer than fibrous tissue, but not as hard as bone. The nature of cartilage is due to the structure of the intercellular material found between the **chondrocytes** (cartilage cells). The three types of cartilage described are hyaline, elastic, and fibrous.

Hyaline cartilage (Fig. 1-8) is the glass-like covering of bones within joints. This type of cartilage forms a smooth surface that reduces friction, so that one bone

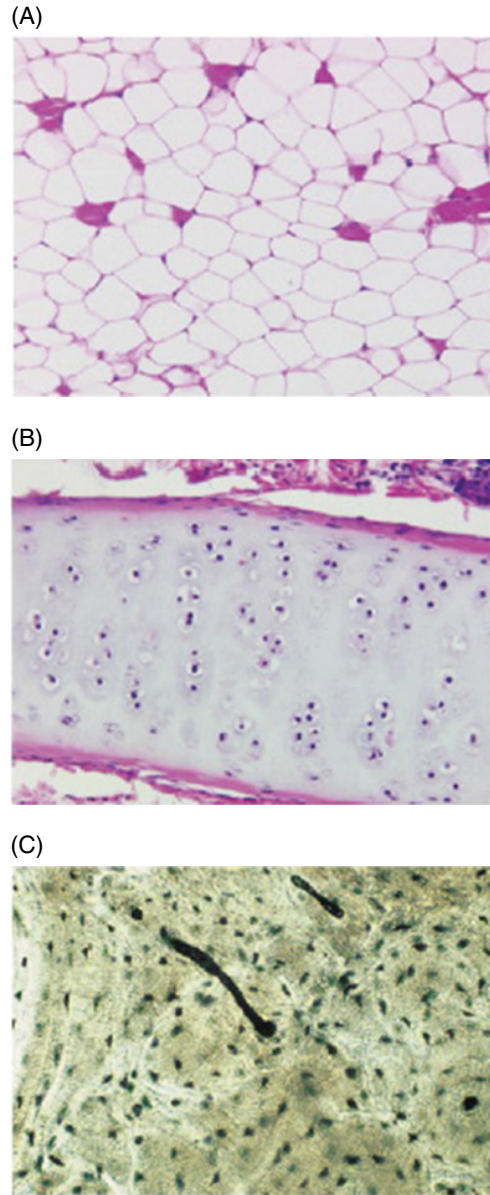


Figure 1-8. (A) Adipose (fat) tissue. (B) Hyaline cartilage. (C) Bone in cross section. Osteocytes reside in small lacunae in the concentric circles of the central canal (Haversian) system. *Source:* (A, B) courtesy of Sandra Pitcaithley, DVM; (C) Bacha & Wood, 1990. Reproduced with permission of John Wiley & Sons, Inc.

easily glides over another. The actively growing areas near the ends of long bones also consist of hyaline cartilage. **Elastic cartilage** consists of a mixture of cartilage substance and elastic fibers. This type of

cartilage gives shape and rigidity to the external ear. **Fibrocartilage** consists of a mixture of cartilage and collagenous fibers, which forms a semielastic cushion of great strength. The intervertebral disks between the bodies of adjacent vertebrae are composed of fibrocartilage.

Bone is produced by bone-forming cells called **osteoblasts**. These cells produce **osteoid tissue**, which later becomes calcified to form bone. The bone may be arranged in the form of spicules (small spikes) and flat plates, forming a sponge-like network called **cancellous bone**, or **spongy bone**. Alternatively, osteoid may be laid down in the form of laminated cylinders (**Haversian** or **osteonal systems**), closely packed together to form **compact bone** (Fig. 1-8).

Blood consists of a fluid matrix (liquid portion), the plasma, a variety of cells (Fig. 1-9), proteins, monosaccharides (simple sugars), products of fat degradation, and other circulating nutrients, wastes, electrolytes, and chemical intermediates of cellular metabolism. It is sometimes considered to be a connective tissue because of the origin of some of its components.

Red blood cells (RBCs) are also called **erythrocytes**. In most domestic mammals they are nonnucleated biconcave disks that contain the protein **hemoglobin**. The main function of the RBCs is to carry hemoglobin. Hemoglobin in turn has the primary function of carrying oxygen from the lungs to all tissues of the animal. At the tissue level, oxygen is released to the cells, while carbon dioxide, which is produced by the cells, diffuses into the blood to be carried back to the lungs, where it can be eliminated during breathing. **Anemia** is a reduction in the concentration of functional RBCs in the blood. It can result from a loss of red cells (as in hemorrhage), insufficient RBC production, or inappropriate or premature degradation of the red cells.

White cells (also called **leukocytes**) are one of the body's first lines of defense against infection. They include agranulocytes and

granulocytes. **Agranulocytes** are of two kinds: **monocytes**, large cells that engulf and destroy foreign particles, and **lymphocytes**, which usually are smaller and are associated with immune responses. An excess of agranulocytes tends to be associated with chronic types of diseases.

Granulocytes (**polymorphonuclear leukocytes**) are of three types and are described according to their affinity for different stains: granules in **neutrophils** stain indifferently; **basophils** have dark-staining granules when stained with common blood stains; and **eosinophils** have red-staining granules. Blood **platelets** (**thrombocytes**) are small, irregularly shaped cellular fragments that are associated with the clotting of the blood. Mammalian platelets lack a nucleus.

Plasma is the fluid part of unclotted blood. Plasma is particularly useful as a substitute for blood in transfusions because the proteins in it give it the same osmotic pressure as blood. Plasma therefore will not escape from blood vessels as readily as an electrolyte solution (e.g., saline).

Serum is the supernatant fluid that remains after a clot forms and incorporates the cellular components of blood. It is similar to plasma, but lacks most of the clotting factors because they were used to make the clot. Serum is sometimes administered for prevention and treatment of diseases because it contains the antibody fractions of the blood.

Muscle Tissue

The three types of muscle tissue are skeletal, smooth, and cardiac (Fig. 1-10). Both skeletal and cardiac muscle cells consist of fibers that under the microscope show characteristic cross-striations, so both are classified as **striated muscle**. Smooth muscle cells lack distinct cross-striations.

Each skeletal muscle cell must have its own nerve supply, and when stimulated, the whole fiber contracts. This is the all-or-none law of muscle contraction. However,

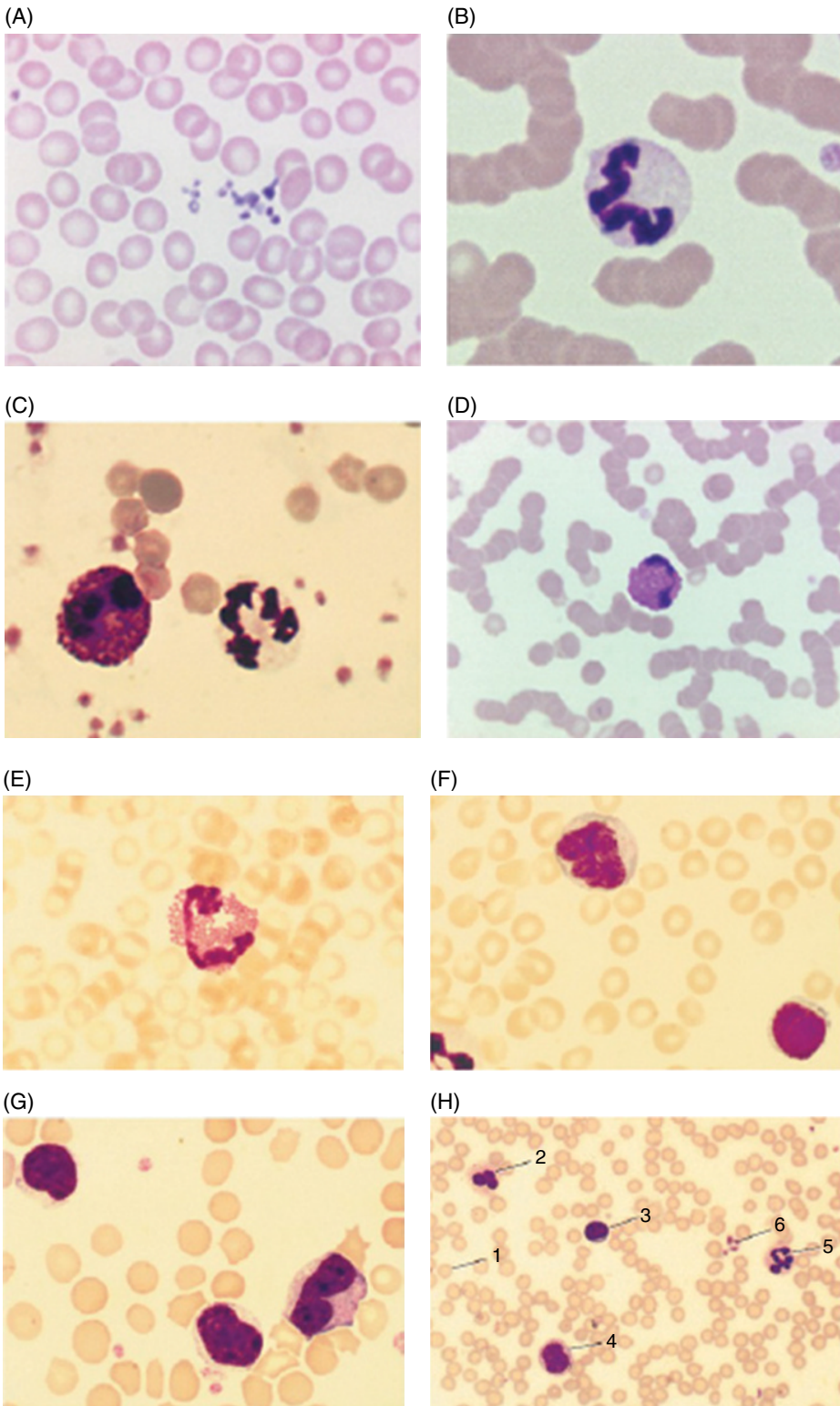


Figure 1-9. (A) Canine red blood cells (erythrocytes). In the center of the field are small, dark-staining, enucleate platelets. (B) Canine neutrophil. (C) Equine basophil (left) and neutrophil (right). Small platelets and red blood cells are also seen. (D) Equine eosinophil. (E) Bovine eosinophil. (F) From left to right: neutrophil, monocyte, and lymphocyte. (G) From left to right: two lymphocytes and a monocyte. (H) Low-power micrograph of feline blood showing a variety of blood cell types: 1, red blood cell; 2, eosinophil; 3, lymphocyte; 4, monocyte; 5, neutrophil; 6, platelets. *Source:* images (A), (B), and (D) courtesy of Sandra Pitcaithley, DVM; (C), (E–H) Bacha & Wood, 1990. Reproduced with permission of John Wiley & Sons, Inc.